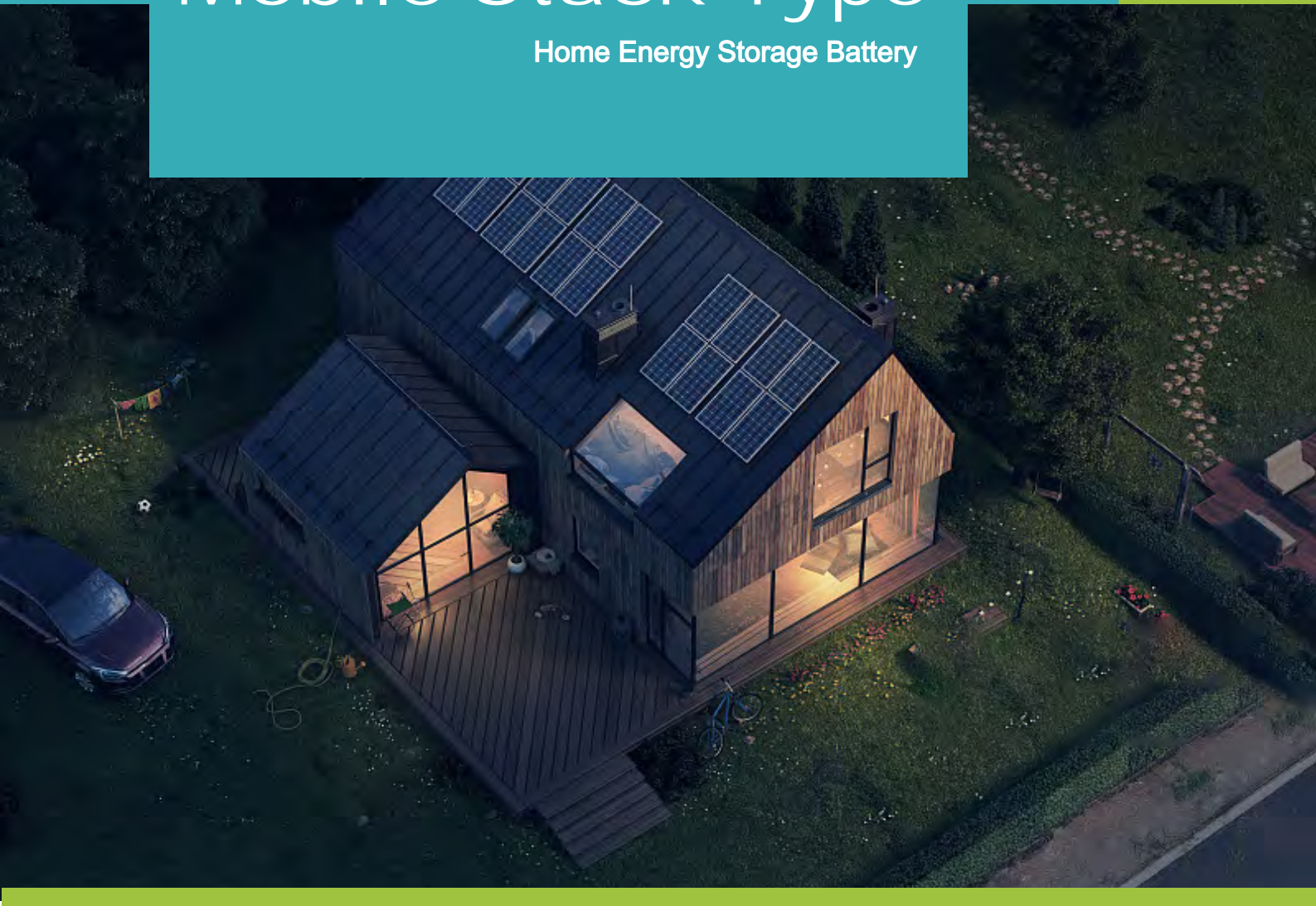


# Mobile Stack Type

Home Energy Storage Battery



**CONSNANT**

Constant Electric Power  
[www.consnant.com](http://www.consnant.com)

SHENZHEN CONSNANT TECHNOLOGY CO., LTD.



# Home Energy Storage Battery



## Stacked Design

Modular stacking design  
Flexible power usage



## BMS system

Built-in BMS system  
Battery safety is guaranteed



## Pulley design

Battery chassis with pulleys  
Easy and fast to move



## Easy to install

Flexible configuration, easy installator  
Plug and play , fusing protection

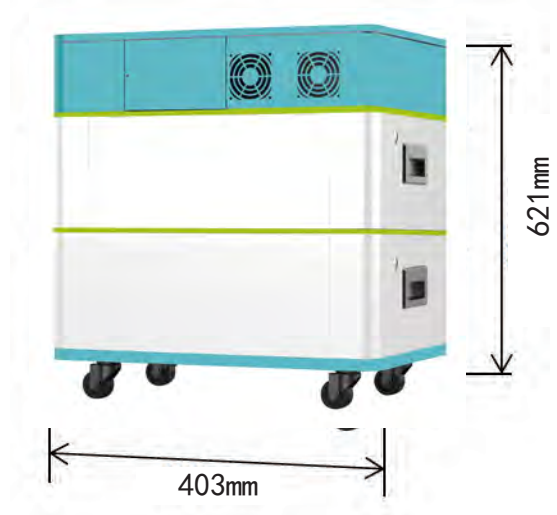
# Product parameters

10KWH

15KWH

20KWH

25KWH



Performance parameter	
Number of phases	Single-phase
Maximum output power	3000-5000W Optional
Rated voltage	51.2V
Rated capacity	200AH
Continuous discharge current	100A
Peak maximum discharge current	100A/10S
Standard charging current	50A
Fast charging current	100A
Expandable battery quantity	1~15
Optional capacity range	5~75KWH
Cooling-down method	Self-ventilation
Battery type	Lithium iron phosphate
Use period	> 15 years @25 °C
Cycle life	6,000 Times (25±2 °C, 0.5C charge and discharge)
Rated power grid frequency	50HZ/60HZ Automatic detection
Power grid voltage range	230/176~270
PV maximum input power	4200W
MPPT Voltage range	60-115Vdc

# Product parameters

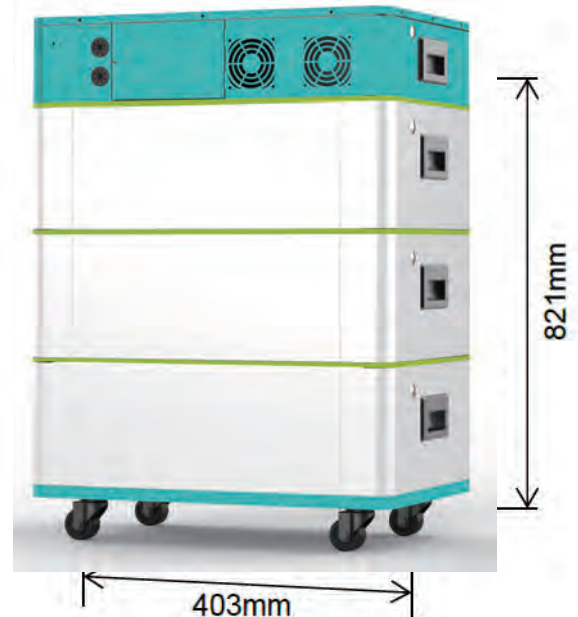
Performance parameter	
Charge and discharge efficiency of the whole machine	>92%
Battery voltage range	40.0Vdc~60Vdc $\pm$ 0.6Vdc (undervoltage alarm / shutdown voltage / overvoltage alarm / overvoltage recovery... LCD screen is available)
Compatible parameters	
Certified	CE
Safety regulation	IEC 62109-1&-2, IEC 62477, EN61000, UN38.3
Mechanical parameters	
Inverter Dimensions / Weight	602*403*139mm/6KG
Battery size / weight	602 * 403 * 200mm / 55KG (single layer)
Chassis size / weight	602*403*82mm/55KG
Way to install	Stacking type
Environmental parameter	
Storage humidity range	$\leq$ 85%RH
Running temperature	20°C~55°C
Recommended running temperature	25°C
Levels of protection	IP21

10KWH

15KWH

20KWH

25KWH



# Product parameters

Performance parameter	
Number of phases	Single-phase
Maximum output power	3000-5000W Optional
Rated voltage	51.2V
Rated capacity	300AH
Continuous discharge current	100A
Peak maximum discharge current	100A/10S
Standard charging current	50A
Fast charging current	100A
Expandable battery quantity	1~15
Optional capacity range	5~75KWH
Cooling-down method	Self-ventilation
Battery type	Lithium iron phosphate
Use period	> 15 years @25℃
Cycle life	6,000 Times (25±2℃,0.5C charge and discharge)
Rated power grid frequency	50HZ/60HZ Automatic detection
Power grid voltage range	230/176~270
PV maximum input power	4200W
MPPT Voltage range	60~115Vdc
Charge and discharge efficiency of the whole machine	>92%
Battery voltage range	40.0Vdc~60Vdc ± 0.6Vdc (undervoltage alarm / shutdown voltage / overvoltage alarm / overvoltage recovery... LCD screen is available)
Compatible parameters	
Certified	CE
Safety regulation	IEC 62109-1&-2, IEC 62477,EN61000,UN38.3
Mechanical parameters	
Inverter Dimensions / Weight	602*403*139mm/6KG
Battery size / weight	602 * 403 * 200mm / 55KG (single layer)
Chassis size / weight	602*403*82mm/55KG
Way to install	Stacking type
Enviromental parameter	
Storage humidity range	≤85%RH
Running temperature	20℃~55℃
Recommended running temperature	25℃
Levels of protection	IP21

# Product parameters

10KWH

15KWH

20KWH

25KWH



## Performance parameter

Number of phases	Single-phase
Maximum output power	3000-5000W Optional
Rated voltage	51.2V
Rated capacity	400AH
Continuous discharge current	100A
Peak maximum discharge current	100A/10S
Standard charging current	50A
Fast charging current	100A
Expandable battery quantity	1~15
Optional capacity range	5~75KWH
Cooling-down method	Self-ventilation
Battery type	Lithium iron phosphate
Use period	> 15 years @25℃
Cycle life	6,000 Times (25±2℃, 0.5C charge and discharge)
Rated power grid frequency	50HZ/60HZ Automatic detection
Power grid voltage range	230/176~270
PV maximum input power	4200W
MPPT Voltage range	60-115Vdc

# Product parameters

Performance parameter	
Charge and discharge efficiency of the whole machine	>92%
Battery voltage range	40.0Vdc~60Vdc $\pm$ 0.6Vdc (undervoltage alarm / shutdown voltage / overvoltage alarm / overvoltage recovery... LCD screen is available)
Compatible parameters	
Certified	CE
Safety regulation	IEC 62109-1&-2, IEC 62477, EN61000, UN38.3
Mechanical parameters	
Inverter Dimensions / Weight	602*403*139mm/6KG
Battery size / weight	602 * 403 * 200mm / 55KG (single layer)
Chassis size / weight	602*403*82mm/55KG
Way to install	Stacking type
Environmental parameter	
Storage humidity range	$\leq$ 85%RH
Running temperature	20°C~55°C
Recommended running temperature	25°C
Levels of protection	IP21

10KWH

15KWH

20KWH

25KWH



# Product parameters

Performance parameter	
Number of phases	Single-phase
Maximum output power	3000-5000W Optional
Rated voltage	51.2V
Rated capacity	500AH
Continuous discharge current	100A
Peak maximum discharge current	100A/10S
Standard charging current	50A
Fast charging current	100A
Expandable battery quantity	1~15
Optional capacity range	5~75KWH
Cooling-down method	Self-ventilation
Battery type	Lithium iron phosphate
Use period	> 15 years @25℃
Cycle life	6,000 Times (25±2℃, 0.5C charge and discharge)
Rated power grid frequency	50HZ/60HZ Automatic detection
Power grid voltage range	230/176~270
PV maximum input power	4200W
MPPT Voltage range	60~115Vdc
Charge and discharge efficiency of the whole machine	>92%
Battery voltage range	40.0Vdc~60Vdc ± 0.6Vdc (undervoltage alarm / shutdown voltage / overvoltage alarm / overvoltage recovery... LCD screen is available)
Compatible parameters	
Certified	CE
Safety regulation	IEC 62109-1&-2, IEC 62477, EN61000, UN38.3
Mechanical parameters	
Inverter Dimensions / Weight	602*403*139mm/6KG
Battery size / weight	602 * 403 * 200mm / 55KG (single layer)
Chassis size / weight	602*403*82mm/55KG
Way to install	Stacking type
Enviromental parameter	
Storage humidity range	≤85%RH
Running temperature	20℃~55℃
Recommended running temperature	25℃
Levels of protection	IP21