

# SOLAR STRING INVERTERS

TTL SERIES THREE PHASE



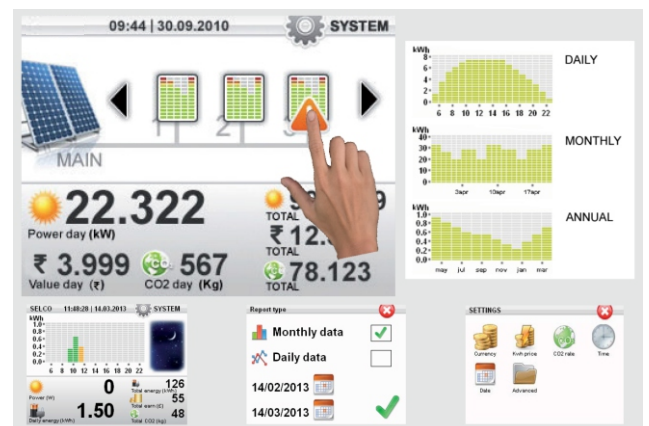
## MAIN FEATURES

- ◆ High efficiency: max 98.2%, Euro 97.8%
- ◆ Max I/P voltage 1000V
- ◆ Wide MPPT working range: 350V-800V
- ◆ IP65 grade for outdoor use
- ◆ MPPT with unbalanced I/P power management
- ◆ Dual MPPT with Independent tracking
- ◆ State Of The Art Italian Technology



## TOUCHSCREEN DISPLAY

- ◆ Incredibly responsive touch screen display
- ◆ Accessible even after sunset
- ◆ Inbuilt data logger
- ◆ Graphic Icons for clear readability
- ◆ Multi-inverter readings on one display
- ◆ Real time monitoring
- ◆ Instant data log transfer feature through USB pen drive



## ADDITIONAL FEATURES

- ◆ Intelligent power management system
- ◆ Suitable for installations with reduced string size
- ◆ Web based remote monitoring available

**Touch To Open The World Of Solar Energy**

High Efficiency | Touch Screen | Italian Technology  
Made In India



LATEST GRID CONNECTED CERTIFICATIONS  
FROM NISE LAB INDIA



### Technical Datasheet

	TT1020	TTL1520	TTL2020
<b>INPUTS (DC)</b>			
Maximum power	11.0 kW	16.5 kW	20.0 kW
Maximum voltage	1000 V	1000 V	1000 V
MPPT voltage range	250 V – 800 V	350 V – 800 V	350 V – 800 V
Start input voltage	250 V	350 V	350 V
Maximum power per MPPT	6.5 kW	10 kW	11.7 kW
Max. power per MPPT (Unbalanced operation)	6.0 kW MPP T1 / 5.0 kW MPPT2	10.0 kW MPPT1 / 6.5 kW MPPT2	11.8 kW MPPT1 / 8.2 kW MPPT2
Maximum input current (per MPPT)	18.6 A	25.0 A	25.0 A
Number of MPPT trackers	2	2	2
Maximum number of strings	2MPPT1 / 2MPPT2	3MPPT1 / 3MPPT2	3MPPT1 / 3MPPT2
<b>OUTPUT (AC)</b>			
Grid connection	Three-phase (Δ/Y)	Three-phase (Δ/Y)	Three-phase (Δ/Y)
Rated power	10.0 KVA	15.0 KVA	20.0 KVA
Maximum power	10.5 KVA	15.8 KVA	20.0 KVA
Nominal voltage range	340 - 460 Vac	340 - 460 Vac	340 - 460 Vac
Maximum output current	15.2 A	22.8 A	27.0 A
Grid frequency	50 Hz	50 Hz	50 Hz
Cosp	>0.995 [adj ± 0.80]	>0.995 [adj ± 0.80]	>0.995 [adj ± 0.80]
<b>EFFICIENCY</b>			
Maximum efficiency	98.3 %	98.1 %	98.2%
European efficiency	98.0 %	98.2 %	98.3 %
Start feeding-in power	10 W	10 W	10 W
Stand by consumption	<8W	<8W	<8W
<b>PROTECTIONS</b>			
DC reverse polarity	●	●	●
Integrated RCMU	●	●	●
AC short circuit protection	●	●	●
Overvoltage category (input/output)	II / III	II / III	II / III
Safety class	I	I	I
Ground fault monitoring	●	●	●
DC disconnecting switch	○	○	○
<b>EQUIPMENT</b>			
DC connection (quick)	●	●	●
AC connection (spring clamp)	●	●	●
Interface (USB/RS485/GPRS)	●/●/○	●/●/○	●/●/○
Touch screen graphic display 3.5"	●	●	●
Auxiliary relay	●	●	●
Energy Controller (on-site consumption management)	●	●	●
<b>WARRANTY AND CERTIFICATES</b>			
Duration (5 / 10 / 15 years)	●/○/○	●/○/○	●/○/○
Certificates and approvals	IEC62116   IEC61727   IEC61683   EN50530   IEC60068 (1, 2, 14, 30)		
<b>GENERAL DATA</b>			
Ambient operating Temperature	-25°C to +60°C	-25°C to +60°C	-25°C to +60°C
Noise emissions	<35 dB	<35 dB	<35 dB
Enclosure protection Rating	IP 65	IP 65	IP 65
Installation	Indoor/Outdoor	Indoor/Outdoor	Indoor/Outdoor
Dimension HXWXD	373X231X767	454X241X767	454X241X767
Weight	<25kg	<35kg	<35kg

● standard / ○ optional / – not available

#### AVAILABLE PRODUCTS VARIANTS FOR SOLAR APPLICATIONS

Single Phase Off-Grid Solar Inverter  
 3 Phase Central Grid Tie Inverters  
 1/3 Phase Hybrid Solar Inverter  
 3 Phase String Inverters  
 Green Load Bank

Telecom DC Hybrid System  
 Intelligent String Monitoring Units  
 Array Junction/Combiner Boxes  
 Energy Storage Systems  
 MPPT Charge Controllers

Statcon Energiaa Pvt. Ltd.

B-81 Sector-63 Noida G.B. Nagar 201307 Uttar Pradesh India Ph.: +91 120 3819600 | 11, Fax: +91 120 4308507 Email: info@energiaa.in  
 ©2018 Statcon Energiaa. All Rights Reserved www.energiaa.in

All information herein is subject to change without notice. We do not assume any liability for any change in the materials, specifications or information provided herein

