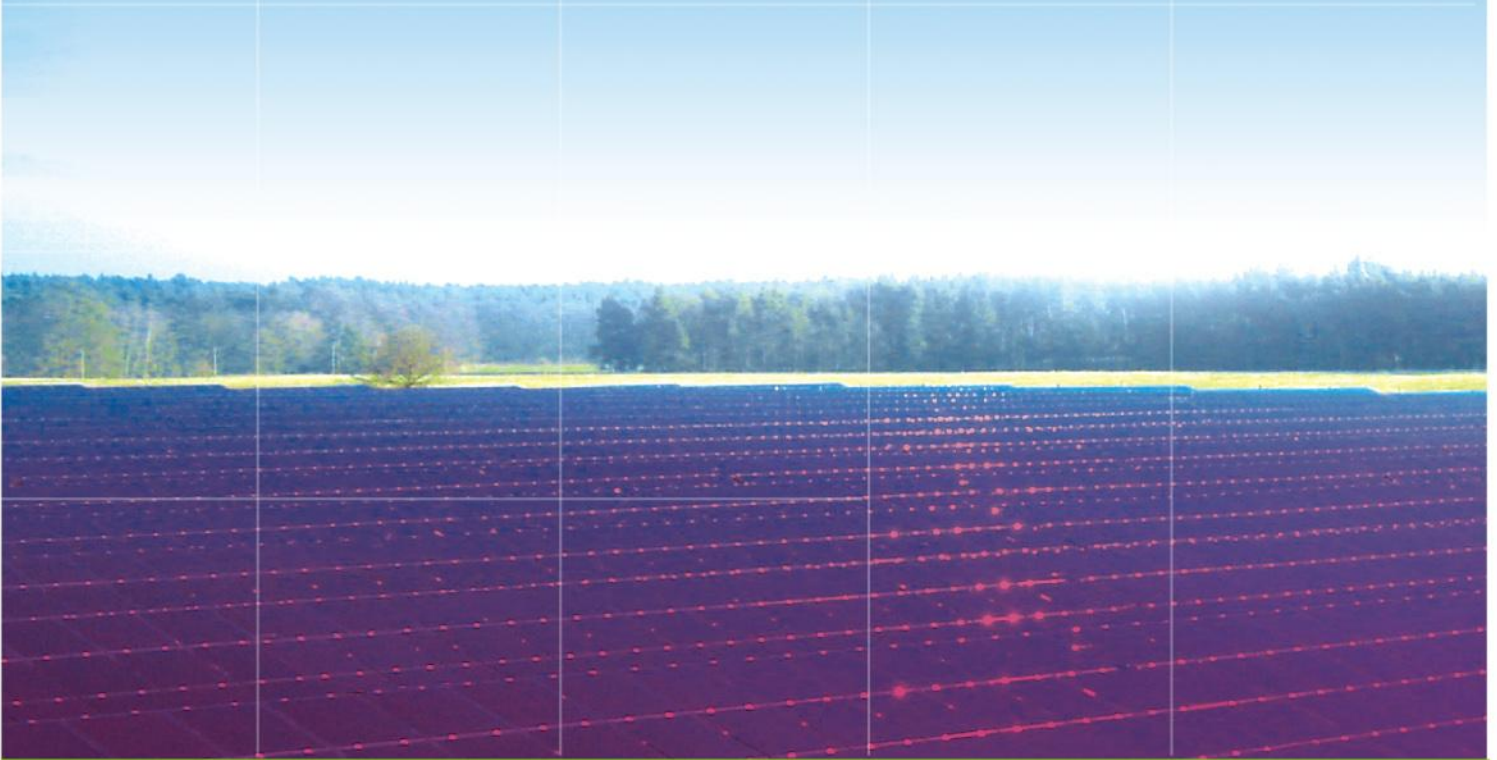


Taking unlimited energy from the SUN.  
Creating a better life to live in harmony with good WELL.  
Enabling people to own a bright future for having SOLAR.



■ Solar Production



**SUN WELL**  
SOLAR



## Company Profile

---

Sun Well Solar was founded in July 2007 as a wholly-owned subsidiary of CMC Magnetics Corporation. In early 2008, Sun Well Solar installed the first fully automated 45 MW/ year thin film solar module line in the Hwa Ya Technology Park in Taoyuan, Taiwan. This turnkey production facility is capable of producing approximately 500,000 amorphous silicon (a-Si) thin-film solar modules annually. The equipment covers the entire production process, from glass purification to the testing of finished solar modules.

CMC is one of the world's leading low cost, high tech producers of optical media. Because of the similarities between media and PV production, Sun Well Solar expects to achieve a low cost and high quality position in thin film solar module photovoltaic manufacturing. Sun Well Solar is also investing heavily in R&D to achieve sustainable growth through innovative technology. With extensive manufacturing experience, Sun Well Solar expects to become one of the key players in the renewable energy industry.





# Product Specification

● WD-A-CC Series



● WD-C-GF Series



● WD-B-GA Series



● WD-E-CC Series



## Electrical Specification

Model	Power Grade	Rated Power Output Range Pmpp [W]	Stabilized Performance				Initial Performance				Max. Over-current Protection Rating	Temperature Coefficients	Max System Voltage
			Vmpp [V]	I <sub>mp</sub> [A]	V <sub>oc</sub> [V]	I <sub>sc</sub> [A]	Vmpp [V]	I <sub>mp</sub> [A]	V <sub>oc</sub> [V]	I <sub>sc</sub> [A]			
			Electrical tolerance: ± 10 %										
WD-A-CC-0873	80 W	80 ≤ P <sub>mp</sub> < 85	97	0.85	135	1.08	107	0.99	138	1.18	2.0 A	I <sub>sc</sub> : +0.04 %/K V <sub>oc</sub> : -0.34 %/K P <sub>mp</sub> : -0.22 %/K V <sub>mp</sub> : -0.33 %/K	1000 V D.C. (IEC)
WD-A-CC-0872	85 W	85 ≤ P <sub>mp</sub> < 90	99	0.88	136	1.13	110	1.02	139	1.19			
WD-A-CC-0871	90 W	90 ≤ P <sub>mp</sub> < 95	102	0.91	137	1.15	111	1.06	140	1.21			
WD-A-CC-0870	95 W	95 ≤ P <sub>mp</sub> < 100	103	0.94	137	1.20	111	1.13	140	1.26			
WD-A-CC-087A	100 W	100 ≤ P <sub>mp</sub> < 105	103	1.00	138	1.24	111	1.19	141	1.30			
WD-C-GF-0905 WD-B-GA-0775	70 W	70 ≤ P <sub>mp</sub> < 75	93	0.78	134	1.06	99	0.93	137	1.09			600 V D.C. (UL)
WD-C-GF-0904 WD-B-GA-0774	75 W	75 ≤ P <sub>mp</sub> < 80	95	0.81	135	1.08	102	0.96	138	1.11			
WD-C-GF-0903 WD-B-GA-0773	80 W	80 ≤ P <sub>mp</sub> < 85	99	0.83	136	1.09	105	0.99	139	1.13			
WD-C-GF-0902 WD-B-GA-0772	85 W	85 ≤ P <sub>mp</sub> < 90	103	0.85	137	1.11	106	1.05	140	1.15			
WD-A-GE-0656	65 W	65 ≤ P <sub>mp</sub> < 70	33	2.05	53	2.83	34	2.51	54	2.97			
WD-E-CC-125C	110 W	110 ≤ P <sub>mp</sub> < 115	100	1.12	130	1.32	102	1.31	135	1.41	2.0 A	I <sub>sc</sub> : +0.07 %/K V <sub>oc</sub> : -0.40 %/K P <sub>mp</sub> : -0.35 %/K V <sub>mp</sub> : -0.42 %/K	
WD-E-CC-125D	115 W	115 ≤ P <sub>mp</sub> < 120	103	1.14	128	1.35	104	1.35	136	1.42			
WD-E-CC-125E	120 W	120 ≤ P <sub>mp</sub> < 125	105	1.16	129	1.39	105	1.39	138	1.46			
WD-E-CC-125F	125 W	125 ≤ P <sub>mp</sub> < 130	107	1.18	130	1.42	107	1.41	139	1.50			

Notice: All electrical data is average production data and is subject to a measuring equipment tolerance of ± 2 %.



Qualified, IEC 61646  
Safety tested  
IEC 61730  
Periodic Inspection



# Product Specification

## Physical Specification

Model		WD-A-CC Series	WD-C-GF Series	WD-B-GA Series	WD-E-CC Series
Active Material of Cell		Amorphous silicon			Amorphous and microcrystal silicon
Junction Type of Cell		Single-junction			Double-junction
Encapsulation Material		Polyvinylbutyral (PVB), thickness: 0.76 mm			
Front Cover		Float glass, thickness: 3.2 mm			Low iron glass, thickness: 3.2 mm
Back Cover		Thermally strengthened glass, thickness: 3.2 mm	Float glass, thickness: 3.2 mm	Tempered glass, thickness: 6.0 mm	Thermally strengthened glass, thickness: 3.2 mm
Wiring Material		Tin & silver coated copper ribbon, thickness: 0.1 mm			
Junction Box	Bypass Diode	Yes			
	IP Class	IP 67	IP 67	IP 65	IP 65
Junction Box Cable Length		Downward, 800 mm(+) / 600 mm(-)	Upward, 800 mm(+) / 600 mm(-)	Sideward, 890 mm X 2	Downward, 800 mm X 2
Connecting Cable/ Plug		Rated voltage: 1000 V D.C., Plug/Socket: MC4 compatible, Ø 4 mm, cable cross section: 2.5 mm <sup>2</sup>			
Transparency		No	Semi-transparent, average transmittance T(%) at 400~800 nm: 20±3.5%	Semi-transparent, average transmittance T(%) at 400~800 nm: 17.5±3.5%	No
Frame		No			
Dimensions	Length	1300 mm +2/-1 mm		1300 mm +2/-1 mm (without junction box)	1300 mm +2/-1 mm
				1311 mm +2/-1 mm (with junction box)	
	Width	1100 mm +2/-1 mm			
Thickness	Thickness	7.0 ± 0.5 mm (without junction box)	7.0 ± 0.5 mm (without junction box)	9.8 ± 0.5 mm (without junction box)	7.0 ± 0.5 mm (without junction box)
		26 ± 1.0 mm (with junction box)	26 ± 1.0 mm (with junction box)	10.0 ± 1.0 mm (with junction box)	21.2 ± 1.0 mm (with junction box)
Weight		24.0 ± 0.5 Kg		33.5 ± 0.5 Kg	24.0 ± 0.5 Kg
Certifications		EN/IEC 61646 & 61730 Application Class A UL 1703 on going by UL	IEC 61646 & 61730 on going by TÜV-Rheinland		

Notice: Sun Well Solar reserves all rights to change product specifications and will not notify customers of these changes individually.

### Warranty

Product Guarantee 2 years after the shipment from Sun Well Solar.

Power Guarantee 90% of the specified minimum output of the module for a 10-year period after shipment from Sun Well Solar.  
80% of the specified minimum output of the module for a 20-year period after shipment from Sun Well Solar.

**SUN WELL SOLAR**  
**CORPORATION**

220, Wen Hwa 2nd Rd., Kewi-Shan, Tao-Yuan, 333, Taiwan  
TEL / 886-3-2550250 · FAX / 886-3-3187012  
E- mail / sales@sunwellsolar.com · HR@sunwellsolar.com  
www.sunwellsolar.com