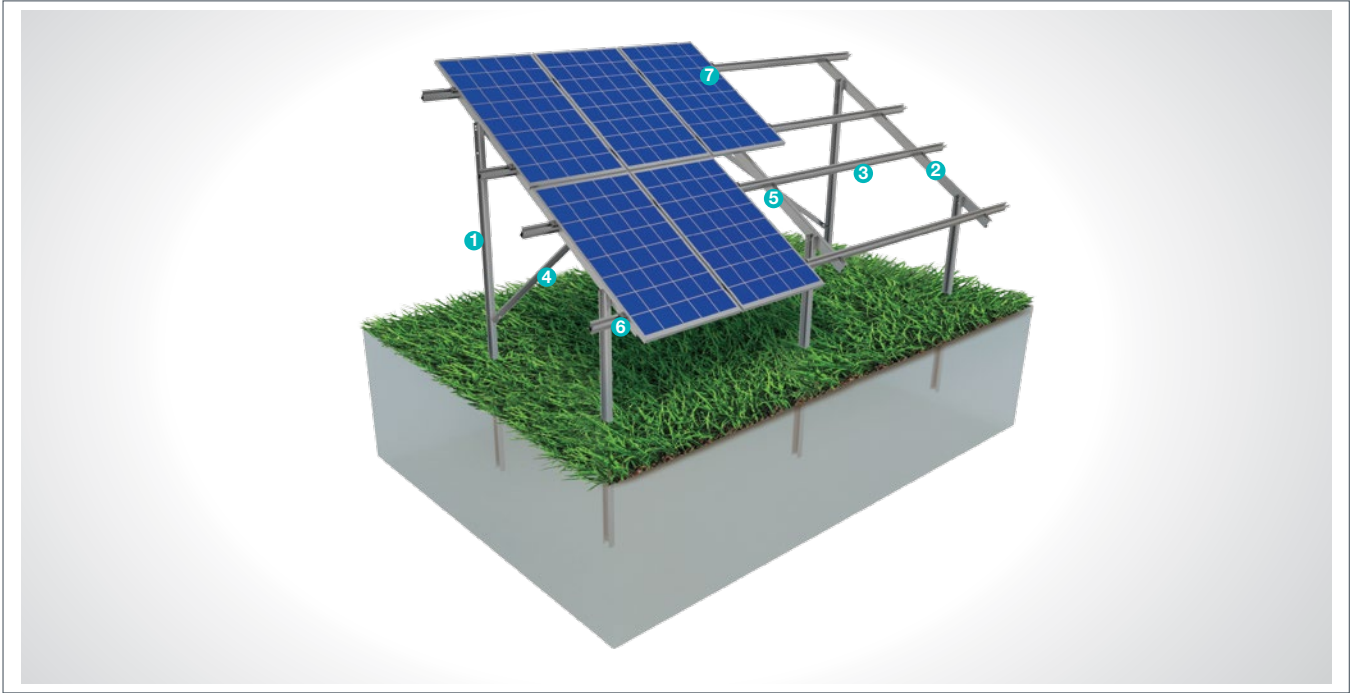


(KPT9) Steel Mounting System with Ground Driven Aluminum Purlin & 2 Vertical Panels

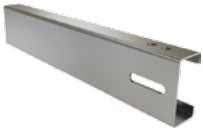
Overview

KPT9, is a ground driven steel support and mounting system with aluminum purlin and 2 vertical panels for open terrain solar panels. The system is an optimal application solution for installations of PV projects on large and medium-sized terrains . After manufacturing the system components with high-technology machines and equipment, an excellent corrosion resistance is then achieved through hot-dip galvanized coating. The system, incorporating a high-level engineering design, provides assembly and cost advantages.



STEEL COLUMN

1



- **CK-90 / CK-100 / CK-120**
M12X30 Knurled Bolt
M12 Flanged Nut
M12 Washer

STEEL BEAM

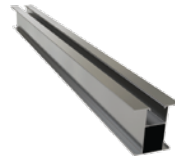
2



- **CR-100 / CR-120**
M12X30 Knurled Bolt
M12 Flanged Nut
M8X30 Knurled Bolt
M8 Flanged Nut
M8/M12 Washer

ALUMINUM PURLIN

3



- **AA-70x70**
M8X30 Hex Bolt
M8 Rectangle Nut

STEEL L BRACKET

4



- **CL-40X40 / CL-50X50**
M12X30 Knurled Bolt
M12 Flanged Nut
M12 Washer

PURLIN CONNECTOR JOINING PIECE

5



- **L35**
M8X30 Hex Bolt
M8 Flanged Nut

PANEL SIDE RETAINER

6



- **H30-H32-H40**
M8X30 Hex Bolt
M8 Rectangle Nut

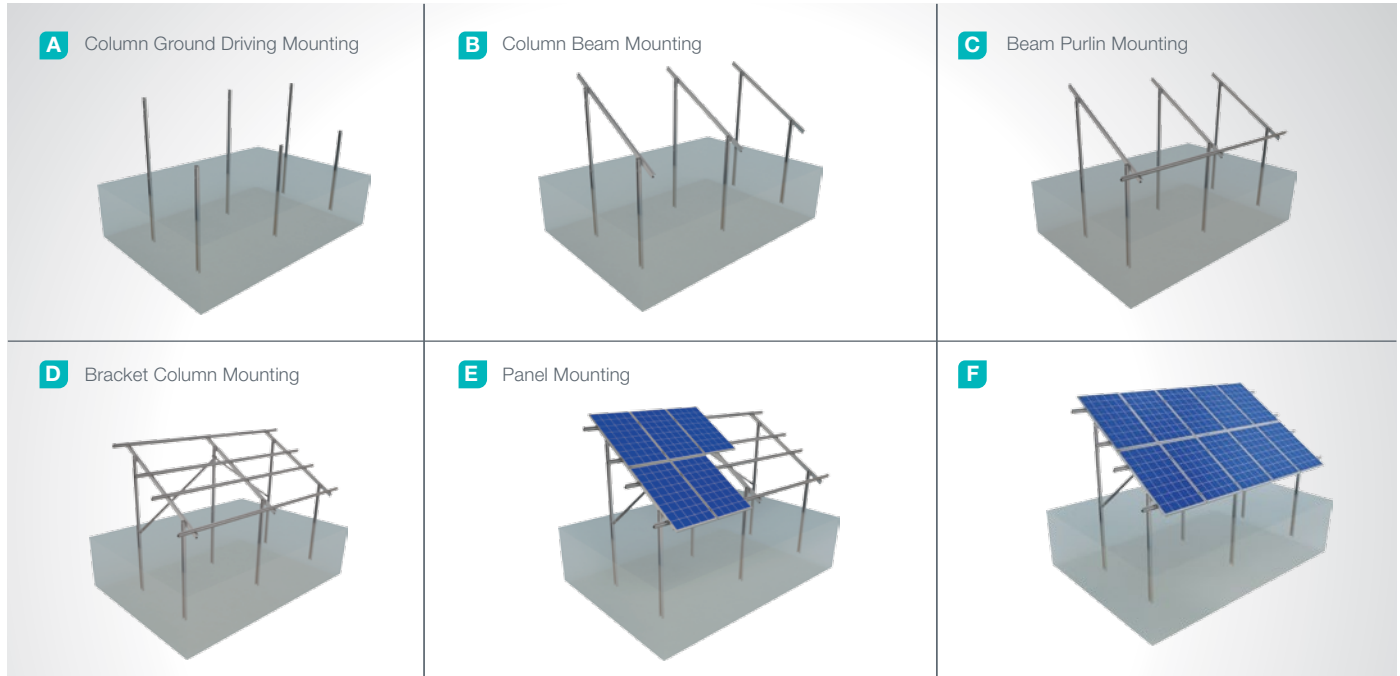
PANEL CENTER RETAINER

7



- **L70**
M8X30 Hex Bolt
M8 Rectangle Nut

Installation Phase



Advantages

- Time saving for installation
- Cost saving for installation
- Suitable solutions for combiner box and inverter installation
- Suitable solutions for different terrains
- Tailored design solutions for customer
- Customer oriented engineering solutions

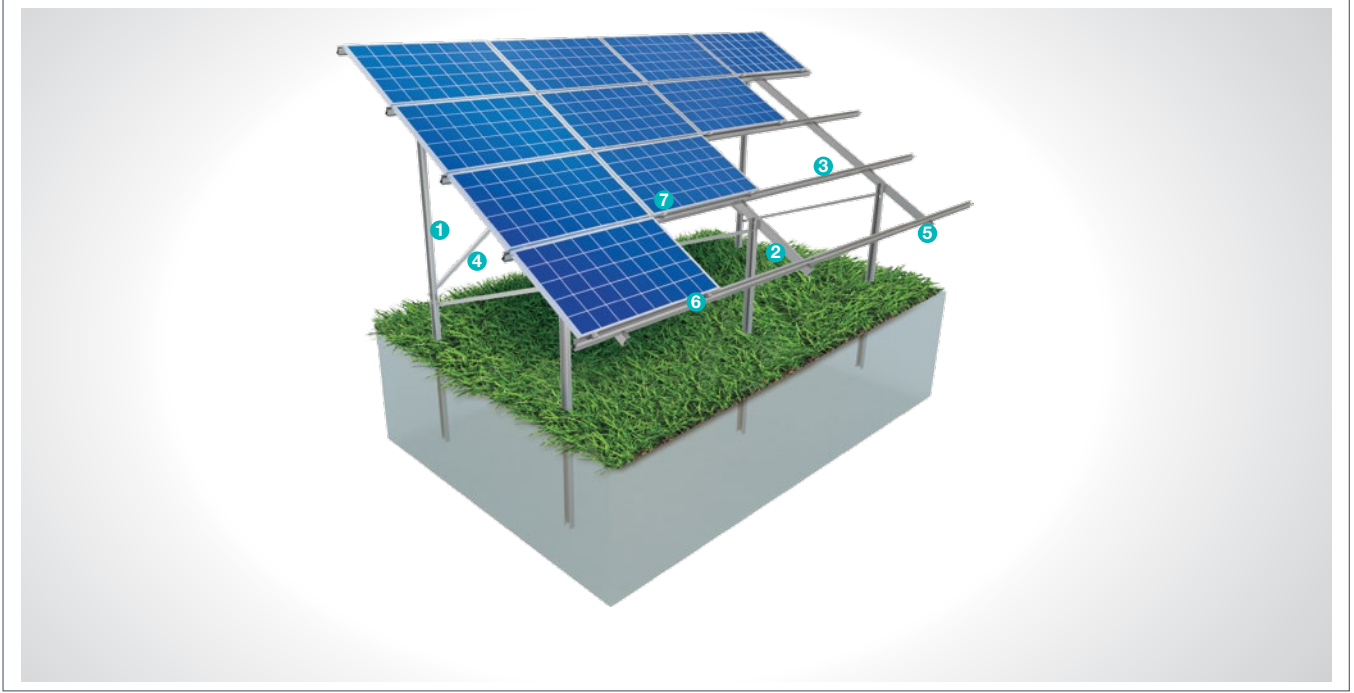
Technical Specifications

Description:	(KPT9) Steel Mounting System with Ground Driven Aluminum Purlin & 2 Vertical Panels
Mounting Method:	Ground Driving
Tilt Angle:	0-60 degrees
Module Application:	Framed and Unframed
Panel Height From Ground:	60 cm
Column and Beam Coating:	EN ISO 1461
Column and Beam Material:	EN 10025 / EN 10029
Optional Beam Material:	EN 10346
Panel Retainer:	EN AW 6063
Connector Equipment:	DIN 934 / DIN933 / DIN 912, A2-70 DIN 50979

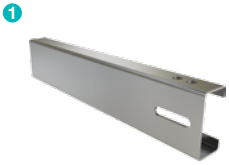
(KPT10) Steel Mounting System with Ground Driven Aluminum Purlin & 4 Horizontal Panels

Overview

KPT10, is a ground driven steel support and mounting system with aluminum purlin and 4 horizontal panels for open terrain solar panels. The system is an optimal application solution for installations of PV projects on large and medium-sized terrains . After manufacturing the system components with high-technology machines and equipment, an excellent corrosion resistance is then achieved through hot-dip galvanized coating. The system, incorporating a high-level engineering design, provides assembly and cost advantages.



STEEL COLUMN



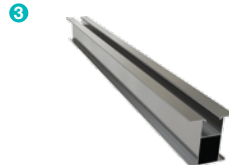
- **CK-90 / CK-100 / CK-120**
M12X30 Knurled Bolt
M12 Flanged Nut
M12 Washer

STEEL BEAM



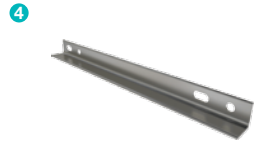
- **CR-100 / CR-120**
M12X30 Knurled Bolt
M12 Flanged Nut
M8X30 Knurled Bolt
M8 Flanged Nut
M8/M12 Washer

ALUMINUM PURLIN



- **AA-70x70**
M8X30 Hex Bolt
M8 Rectangle Nut

STEEL L BRACKET



- **CL-40X40 / CL-50X50**
M12X30 Knurled Bolt
M12 Flanged Nut
M12 Washer

ALUMINUM PURLIN TIGHTENING PIECE



- **L35**
M8X30 Hex Bolt
M8 Rectangle Nut

PANEL SIDE RETAINER



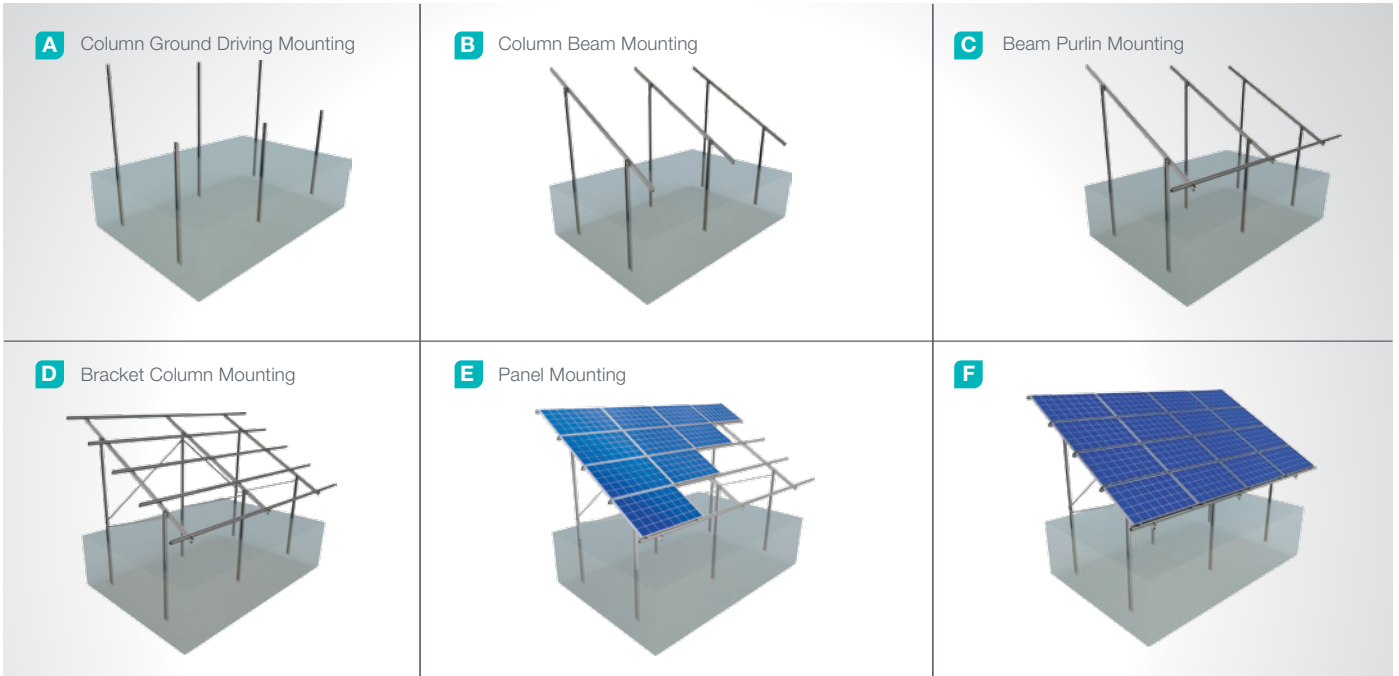
- **H30-H32-H40**
M8X30 Hex Bolt
M8 Rectangle Nut

PANEL CENTER RETAINER



- **L70**
M8X30 Hex Bolt
M8 Rectangle Nut

Installation Phase



Advantages

- Time saving for installation
- Cost saving for installation
- Suitable solutions for combiner box and inverter installation
- Suitable solutions for different terrains
- Tailored design solutions for customer
- Customer oriented engineering solutions

Technical Specifications

Description:	(KPT10) Steel Mounting System with Ground Driven Aluminum Purlin & 4 Horizontal Panels
Mounting Method:	Ground Driving
Tilt Angle:	0-60 degrees
Module Application:	Framed and Unframed
Panel Height From Ground:	60 cm
Column and Beam Coating:	EN ISO 1461
Column and Beam Material:	EN 10025 / EN 10029
Purlin Material:	EN AW 6063
Optional Beam Material:	EN 10346
Panel Retainer:	EN AW 6063
Connector Equipment:	DIN 934 / DIN933 / DIN 912, A2-70 DIN 50979