

ESM-120M

PERC MONO SOLAR MODULE



High module conversion efficiency through PERC, 182mm high efficiency cell



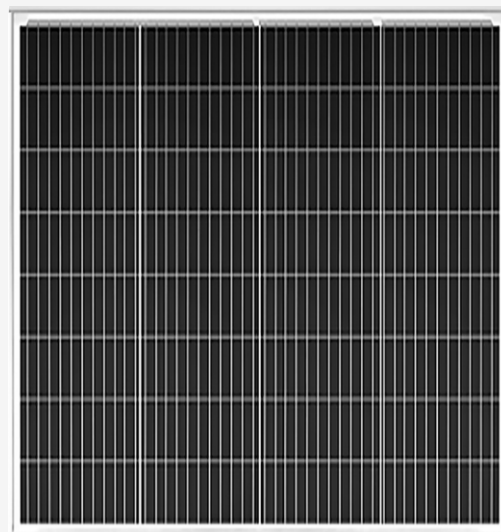
Easy installation and handling for various applications



Entire module certified to withstand high wind loads (2400Pa) and snow loads (5400Pa)



ISO9001, ISO14001, OHSAS18001



An EverExceed high-power residential solar module is an aesthetic addition to most roofs and ground

ENGINEERING EXCELLENCE

The perfect combination of high performance and design

ADVANCED AESTHETICS

Has an elegant appearance that blends beautifully with your home roof line

DURABLE

Provides long life and enhanced cell performance

HIGH PERFORMANCE

Uses advanced surface texturing to improve efficiency



EverExceed PV modules offer leading performance for a variety of applications

Power your application

When you choose EverExceed, you get more well-engineered products, you also get our proven reliability, outstanding customer service and the assurance of our 25-year limited warranty

120 Watt

Electrical Characteristics

Type of Cell	Monocrystalline silicon
Cell Size(mm)	182x91mm
Module Efficiency	19.7%
Cell Configuration	32(4x8)
Size of module (mm)	800x760x30mm
Weight per piece (kg)	6kg
Maximum power (Wp)	120W
Maximum power voltage (V)	18.24V
Maximum power current (A)	6.6A
Open circuit voltage (V)	21.8V
Short circuit current (A)	7.06A
Tolerance of Pmax	0~+5W

Standard Operating Conditions

Maximum system voltage (V)	1000V
Temperature coefficients of Isc (%)	0.045%/°C
Temperature coefficients of Voc (%)	-0.275%/°C
Temperature coefficients of Pm (%)	-0.350%/°C
NOCT(°C)	45°C±2°C
Temperature range	-40°C~+85°C
Surface maximum load capacity	60m/s (200kg/m²)
Series fuse rating	15A

Other Characteristics

Junction box type	IP68 rated
Connectors and cables type	2.5mm²
Length of cables (mm)	700mm
Frame (material, corners, etc.)	Anodized aluminum alloy
Glass	High transmissivity low-iron 3.2mm toughened glass
FF (%)	≥78.22%

Qualifications



IEC 61215 IEC 61730 RoHS



10 years material and workmanship guarantee

95% power output guarantee for 5 years
90% power output guarantee for 10 years
80% power output guarantee for 25 years

EverExceed will not accept responsibility for damage caused to other equipment

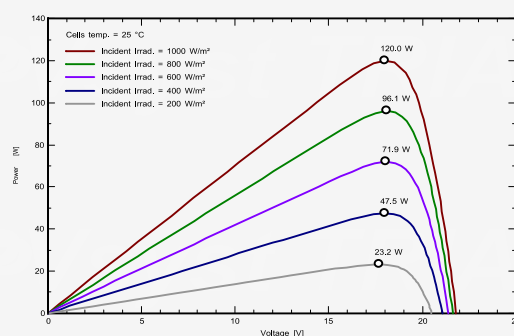
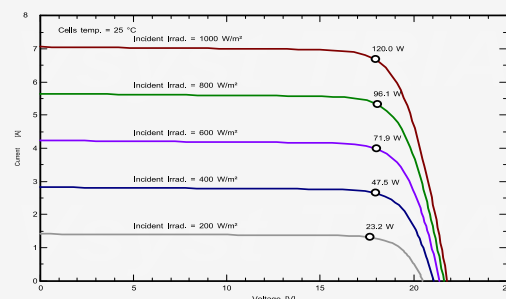
Contact EverExceed to receive our latest product information

5-year
95% power output

10-year
90% power output

25-year
80% power output

Characteristics (Module I-V Graph 120W)



STC: Irradiance 1000W/m², Module temperature 25°C, AM1.5 spectrum.

Dimension

