

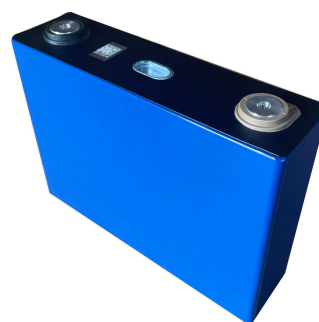
## 100Ah LiFePO4 prismatic cell

Model #: A09/48173125

Spec.: 3.2V/100Ah

Cycle life: 3000 times @1.0C 100%DOD

Dimension: 47.8\*173.9\*132.7mm



Parameter	Value
Rated capacity	100Ah
Operating voltage	2.5V-3.65V
Terminal	Screw / welding
Standard charge / discharge current	0.5C
Max. continuous charge / discharge current	1C
Peak discharge current	2.0C at 120S
Weight	2.3+/-0.1kg
Energy density	140Wh/kg
Calendar Life	10 years
Certificate	BIS, UL1973, IEC62619 etc.
Safety test	Over charge/discharge, Short circuit, Nail, Crush

