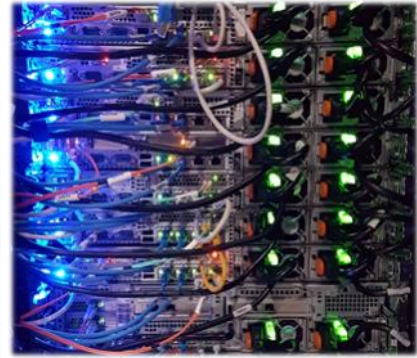


**HYBRID 3-PHASE
SOLAR INVERTER**

HV V3 30KW



- ☑ **3-Phase 400Vac Output**
- ☑ **Industrial Grade Power**
- ☑ **High 384Vdc System**
- ☑ **950V Max PV Input**
- ☑ **Max 45KW PV Support**

*Specification may change without prior notice.

HYBRID 3-PHASE SOLAR INVERTER

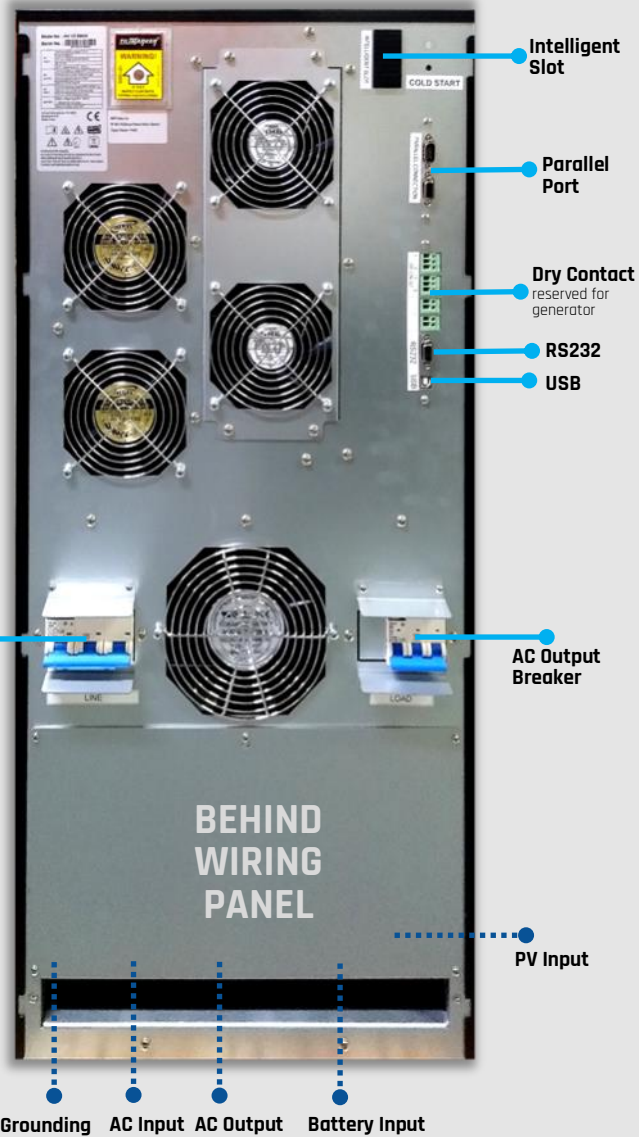
GRID-TIE WITH BACKUP



GRID-TIE ONLY



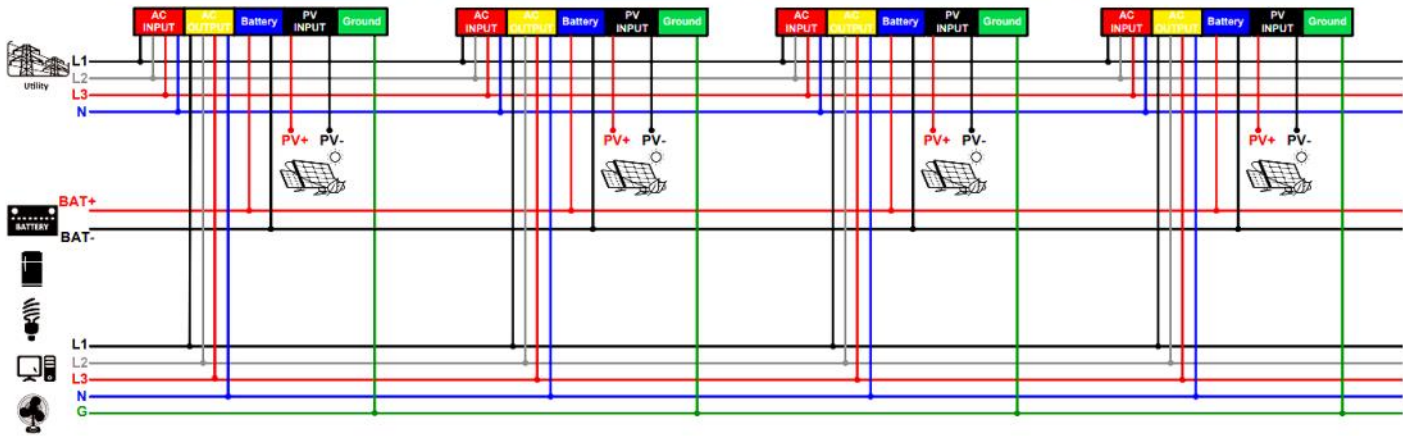
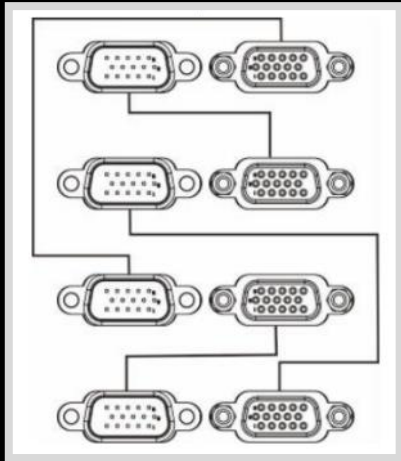
OFF-GRID ONLY



**HYBRID 3-PHASE
SOLAR INVERTER**

COM PORT CONNECTION:

**PARALLEL UP TO 4
UNITS MAX (120KW)**



HYBRID 3-PHASE SOLAR INVERTER

HV V3 3-Phase Series	HV V3 30KW
Rated Power	
Continuous Output	30,000W
Parallel-Ready	Yes, up to 4 units
PV Input Rating (GRID-TIE)	
Max PV Input Power	45,000W
Max PV Input Voltage	950V
Start-up / Initial Feeding Voltage	500 / 550 VDC
PV MPPT Range	460 - 900 VDC
Max PV Input Current	72A
MPPT Tracker	1
AC Input	
Start-up / Auto Restart Voltage	150 - 170 / 180VAC, per phase
Input Voltage Range	170 - 280VAC per phase
Max AC Input Power	30,000W
Nominal Frequency	50 / 60 Hz
Max AC Input Current	43.5A per phase
AC Output	
Nominal AC Output Voltage	230VAC (P-N) / 400VAC (P-P)
Output Voltage Range	195.5 - 253Vac per phase
Output Frequency (GRID-TIE)	49 - 51Hz / 59.3 - 60.5 Hz
Output Frequency (OFF-GRID)	50 / 60Hz, auto-sensing
Output Waveform	Pure Sine Wave
Max Output Power (battery mode)	30,000W
Max DC/AC Conversion Efficiency	91%
Battery Charger	
DC Working Range	320 - 512VDC
DC Charging Range	384-480VDC
Nominal DC Voltage	384VDC
Max Charging Current	80A
ENVIRONMENTAL / MECHANICAL SPECIFICATIONS	
Ingress Protection Rating	IP20
Communication Port	RS232, USB
Certifications	CE
Operating Temp.	-10 to 55°C (power derating starts >50°C)
Operating Humidity	0 - 900% RH (No condensing)
Operating Altitude	max 2000m (power derating 1% per 100m beyond 1000m)
Dimension	1021 x 715 x 430mm
Net Weight	221KG

SPECIFICATIONS ARE SUBJECT TO CHANGE WITHOUT PRIOR NOTICE.