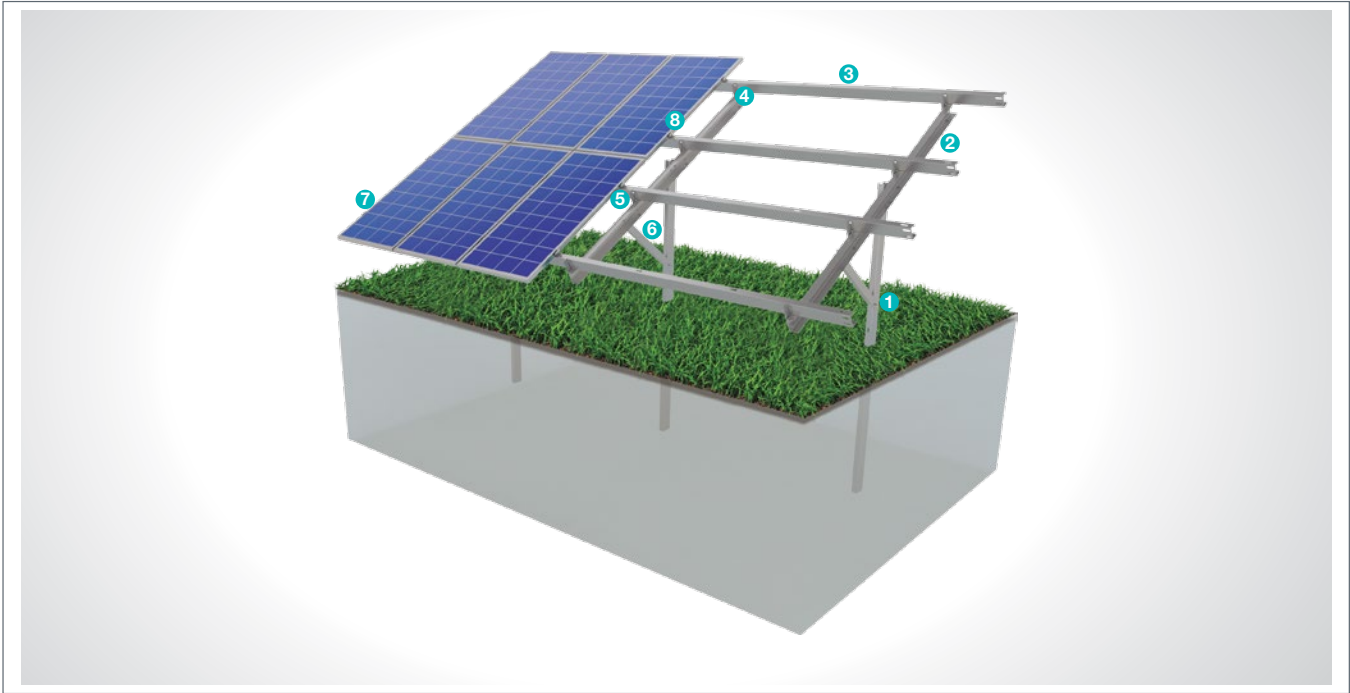


(KPT13) Ground Driven Single Column Steel Mounting System With 2 Vertical Panels

Overview

KPT13, is a ground driven single column steel support and mounting system with 2 vertical panels for open terrain solar panels. The system is an optimal application solution for installations of PV projects on large and medium-sized terrains . It is used extensively on hard ground in order to decrease the number of legs and cost. After manufacturing the system components with high-technology machines and equipment, an excellent corrosion resistance is then achieved through hot-dip galvanized coating. The system, incorporating a high-level engineering design, provides assembly and cost advantages.



STEEL COLUMN

1



- **CK-150 / CK-120**
M12X30 Knurled Bolt
M12 Flanged Nut
M12 Washer

STEEL BEAM

2



- **CR-100 / CR-110 / CR-120**
M12X30 Knurled Bolt
M12 Flanged Nut
M12 Washer

STEEL PURLIN

3



- **CA-110 / CA-120**
M12X30 Knurled Bolt
M12 Flanged Nut
M8X30 Knurled Bolt
M8 Flanged Nut
M8/M12 Washer

STEEL L BRACKET

4



- **CL-50X50**
M12X30 Knurled Bolt
M12 Flanged Nut
M12 Washer

ALUMINUM PURLIN CONNECTOR

5



- **C-110 / C-120**
M12X30 Knurled Bolt
M12 Flanged Nut
M12 Washer

STEEL DIAGONAL

6



- **C-80**
M12X30 Knurled Bolt
M12 Flanged Nut
M12 Washer

PANEL SIDE RETAINER

7



- **H30-H32-H40**
M8X30 Hex Bolt
M8 Flanged Nut

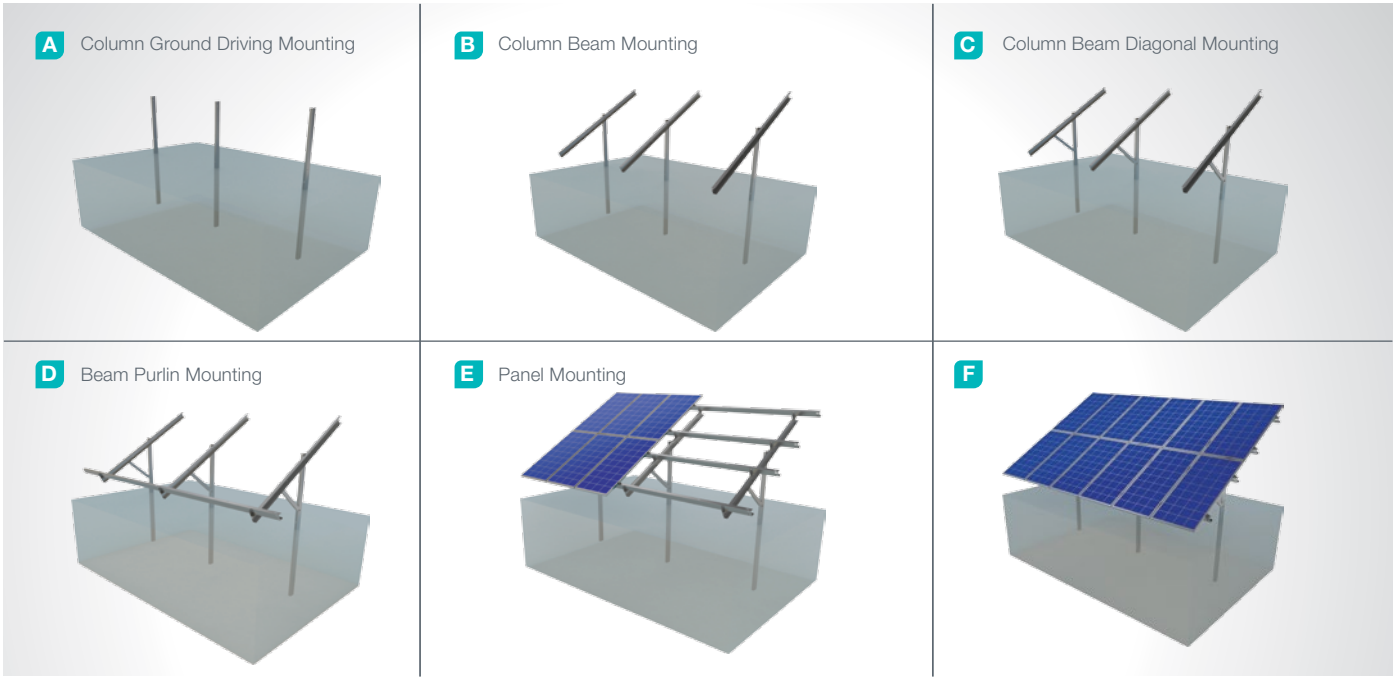
PANEL CENTER RETAINER

8



- **L70**
M8X30 Hex Bolt
M8 Flanged Nut

Installation Phase



Advantages

- Time saving for installation
- Cost saving for installation
- High safety level
- High durability flexible use
- Suitable solutions for combiner box and inverter installation
- Suitable solutions for different terrains
- Suitable for loose ground
- Tailored design solutions for customer
- Customer oriented engineering solutions

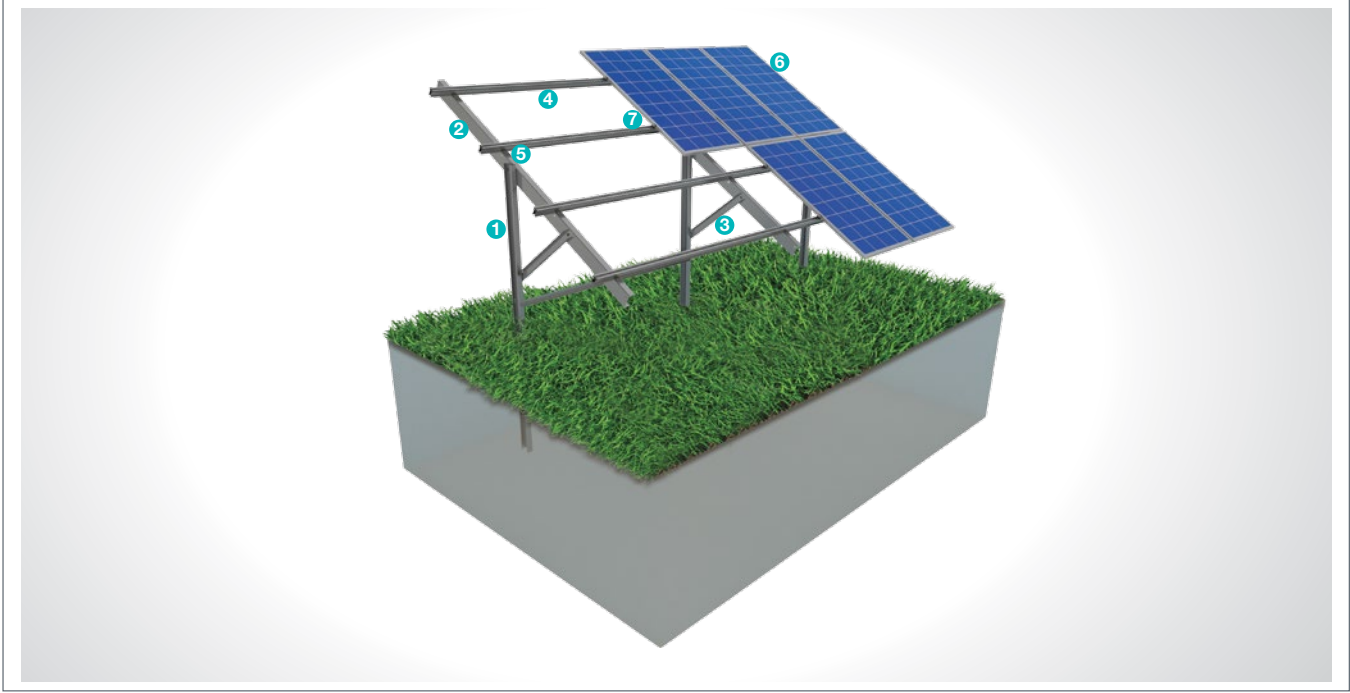
Technical Specifications

Description:	(KPT13) Ground Driven Single Column Steel Mounting System with 2 Vertical Panels
Mounting Method:	Ground Driving
Tilt Angle:	0-60 degrees
Module Application:	Framed and Unframed
Panel Height From Ground:	60 cm
Column and Beam Coating:	EN ISO 1461
Column and Beam Material:	EN 10025 / EN 10029
Optional Beam Material:	EN 10346
Panel Retainer:	EN AW 6063
Connector Equipment:	DIN 934 / DIN933 / DIN 912, A2-70 DIN 50979

(KPT14)Ground Driven Single Column Aluminum Purlin Steel Mounting System with 2 Vertical Panels

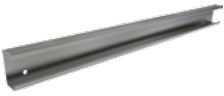
Overview

KPT14, is a ground driven single column steel support and mounting system with aluminum purlin & 2 vertical panels for open terrain solar panels. The system is an optimal application solution for installations of PV projects on large and medium-sized terrains . It is used extensively on hard ground in order to decrease the number of legs and cost. After manufacturing the system components with high-technology machines and equipment, an excellent corrosion resistance is then achieved through hot-dip galvanized coating. The system, incorporating a high-level engineering design, provides assembly and cost advantages.



STEEL COLUMN

1



- **CK-150 / CK-120**
M12X30 Knurled Bolt
M12 Flanged Nut
M8/M12 Washer

STEEL BEAM

2



- **CR-100 / CR-110 / CR-120**
M12X30 Knurled Bolt
M12 Flanged Nut
M12 Washer

STEEL DIAGONAL

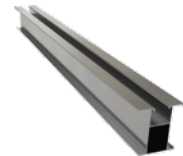
3



- **C-80**
M12X30 Knurled Bolt
M12 Flanged Nut
M12 Washer

ALUMINUM PURLIN

4



- **AA-70x70**
M8X30 Hex Bolt
M8 Rectangular Nut

ALUMINUM PURLIN CONNECTOR

5



- **L35**
M8X30 Hex Bolt
M8 Flanged Nut

PANEL SIDE RETAINER

6



- **H30-H32-H40**
M8X30 Hex Bolt
M8 Rectangular Nut

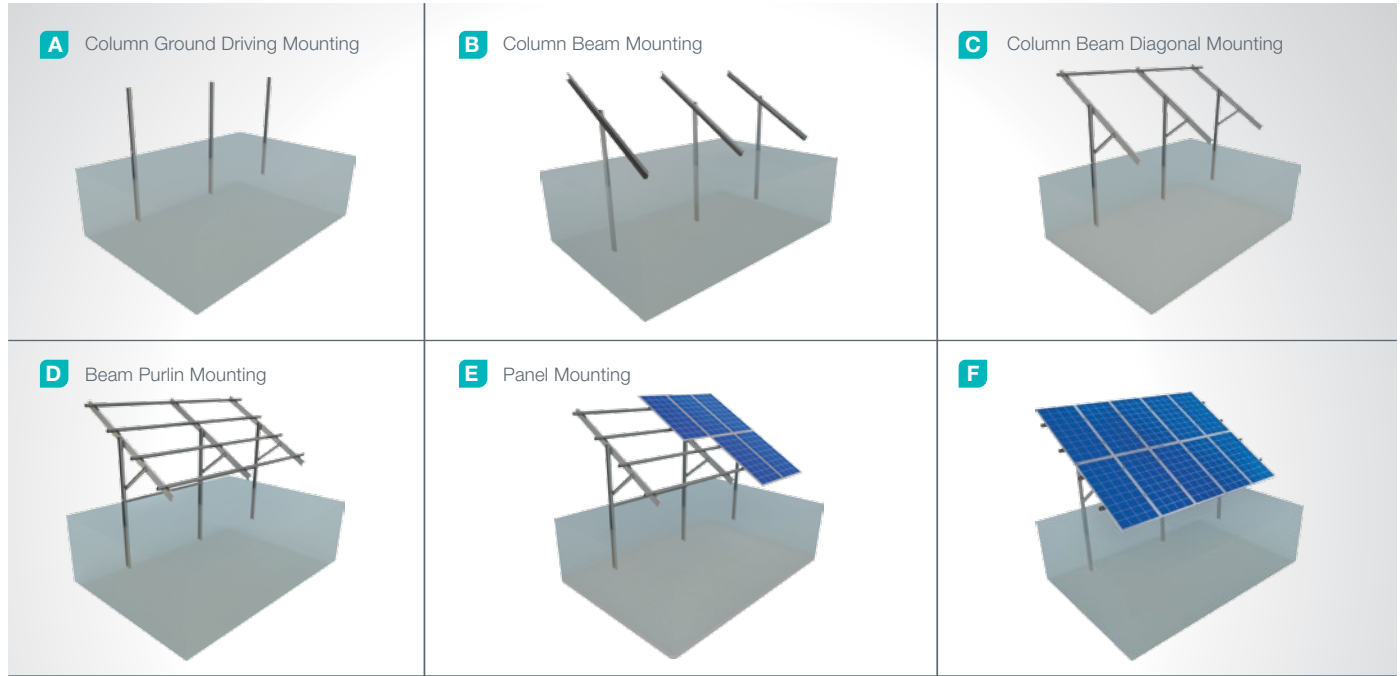
PANEL CENTER RETAINER

7



- **L70**
M8X30 Hex Bolt
M8 Rectangular Nut

Installation Phase



Advantages

- Time saving for installation
- Cost saving for installation
- High safety level
- High durability flexible use
- Suitable solutions for combiner box and inverter installation
- Suitable solutions for different terrains
- Suitable for loose ground
- Tailored design solutions for customer
- Customer oriented engineering solutions

Technical Specifications

Description:	(KPT14) Ground Driven Single Column Aluminum Purlin Steel Mounting System with 2 Vertical Panels
Mounting Method:	Ground Driving
Tilt Angle:	0-60 degrees
Module Application:	Framed and Unframed
Panel Height From Ground:	60 cm
Column and Beam Coating:	EN ISO 1461
Column and Beam Material:	EN 10025 / EN 10029
Purlin Material:	EN AW 6063
Optional Beam Material:	EN 10346
Panel Retainer:	EN AW 6063
Connector Equipment:	DIN 934 / DIN933 / DIN 912, A2-70 DIN 50979