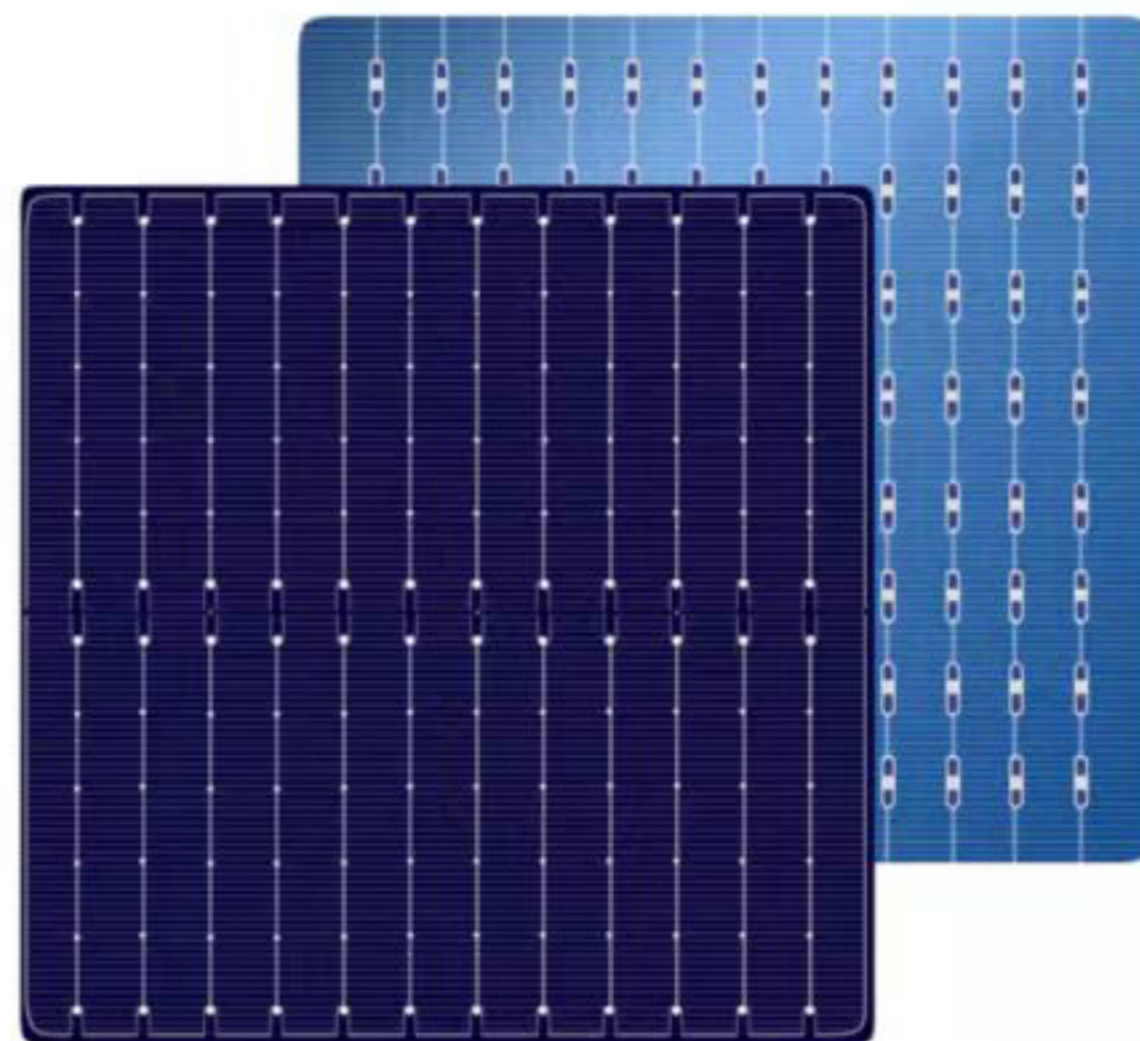
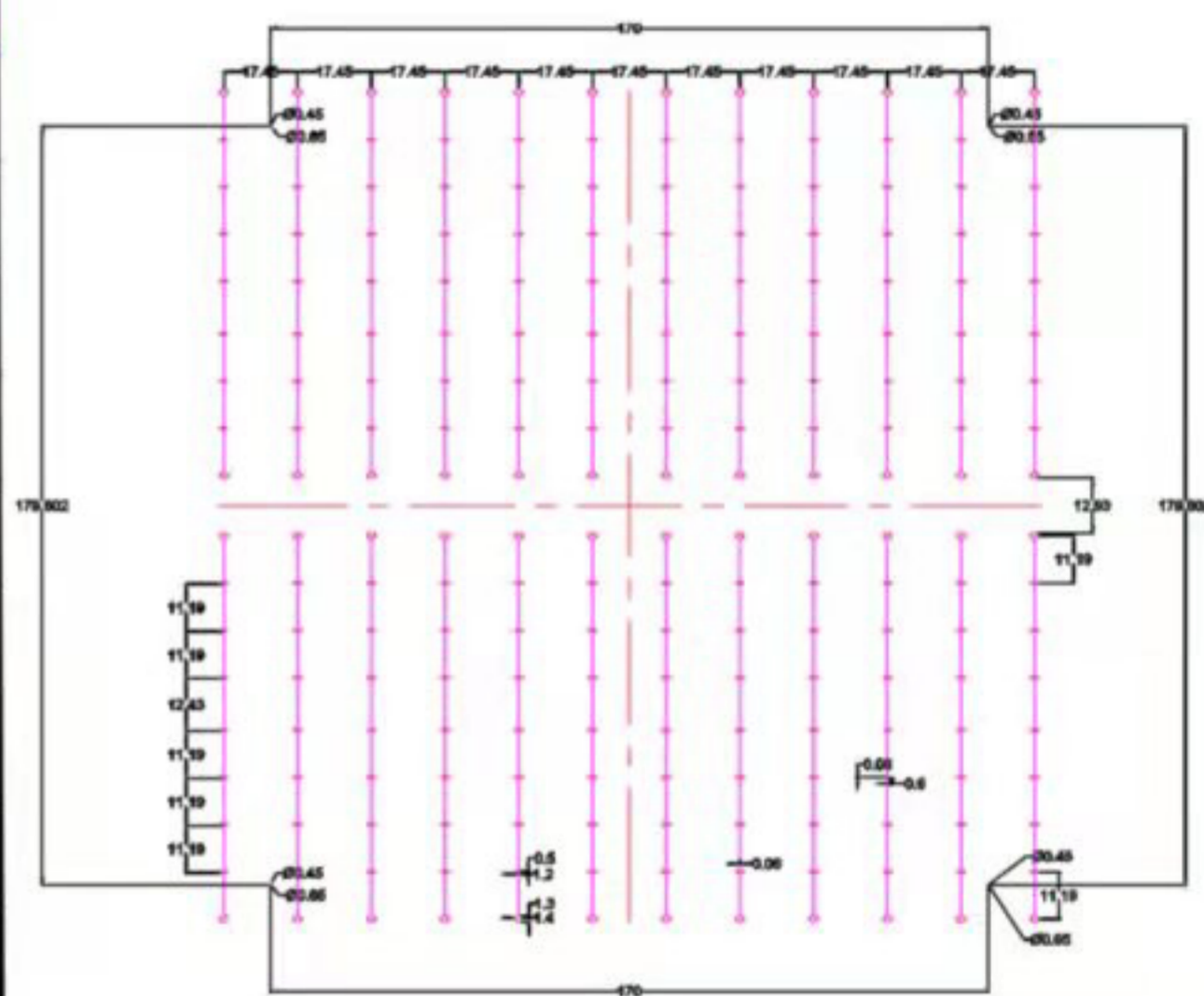


NEW CATALOGUE

Monocrystalline Solar Cells 210MM 12BB



Eff(%)	Pmpp(W)	Umpp(V)	Impp(A)	Uoc(V)	Isc(A)	FF(%)
> 23.2%	10.26	0.59	17.43	0.69	18.31	81.26
23.1%-23.2%	10.19	0.59	17.33	0.69	18.18	81.39
23.0%-23.1%	10.16	0.59	17.32	0.69	18.20	81.15
22.9%-23.0%	10.12	0.58	17.30	0.69	18.17	81.25
22.8%-22.9%	10.07	0.58	17.26	0.68	18.14	81.35
22.7%-22.8%	10.02	0.58	17.14	0.68	17.97	81.67
22.6%-22.7%	9.97	0.58	17.22	0.68	18.09	81.30
22.5%-22.6%	9.94	0.58	17.19	0.68	18.08	81.15
22.4%-22.5%	9.89	0.58	17.06	0.68	17.96	80.76
22.3%-22.4%	9.84	0.58	16.93	0.69	17.89	80.21
21.7%-22.3%	9.75	0.58	16.91	0.68	17.82	80.68



Format	210mmX210mm ±0.25
Thickness	185um±30um
Front	12*0.1±0.3mm busbar(silver),124 fingers, blue silicon nitride anti-reflection coating(PID free)
Back	Back electrode width (silver) 1.3±0.25mm, back side cover aluminum back filed, Vertical laser design

Temperature Index	Intensity(W/m ²)	Uoc	Isc
TkVoltage: -0.36 %/K	1000	1.000	1.000
TkCurrent: +0.07%/K	900	0.996	0.903
TkPower: -0.38%/K	800	0.991	0.803
Rsh ≥ 30 Ω , Irev2 ≤ 0.8A	600	0.988	0.602
	400	0.962	0.403

