

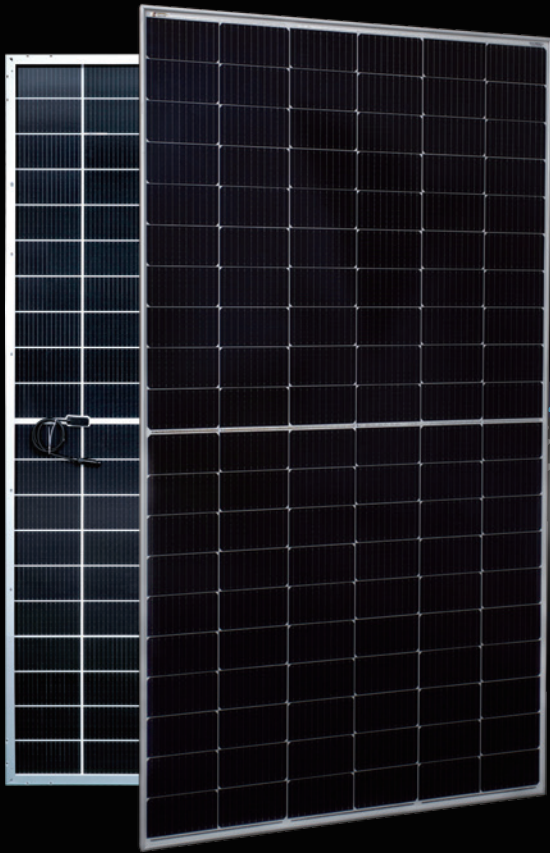
Deutsche
Qualität
Garantiert

TIER 1
BloombergNEF



AESOLAR

since 2003



COMET

enrich your energy yield

30
years

Performance
Guarantee

15
years

Product
Guarantee

615W-635W

AE TME-120BDS Series

SILICON HETEROJUNCTION PV MODULES
HALF-CUT CELLS • BIFACIAL • DOUBLE-GLASS

www.ae-solar.com

120

HALF
CELLS

**210
mm**

CELL
SIZE



LID
RESISTANT



PID
RESISTANT



SALT CORROSION
RESISTANT



SAND
RESISTANT



AMMONIA
RESISTANT

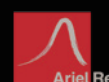


HIGHLY STABLE
AND TOUGH



IEC 61215
IEC 61730
Regular Production Surveillance
Type Tested and Monitored

IEC 62716 (Ammonia corrosion)
IEC 61701 (Salt mist corrosion)
IEC 60068 (Sand and dust)
IEC 62804 (PID resistance)



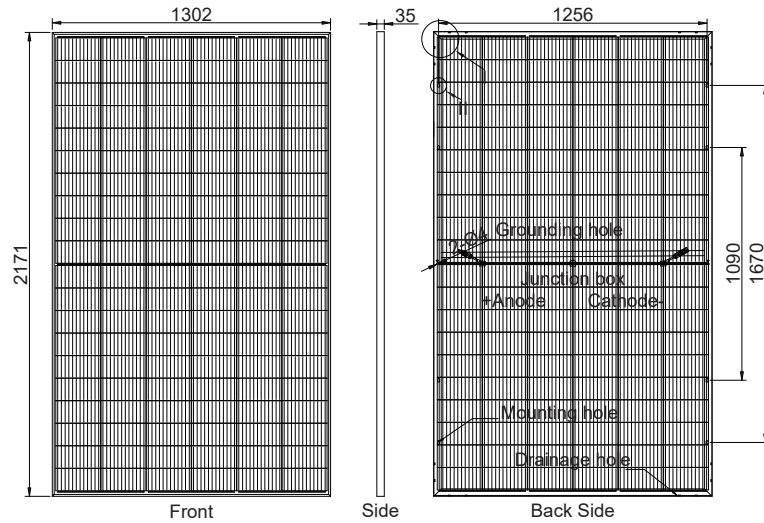
AE TME-120BDS Series 615W-635W



SILICON HETEROJUNCTION PV MODULES
 HALF-CUT CELLS • BIFACIAL • DOUBLE-GLASS

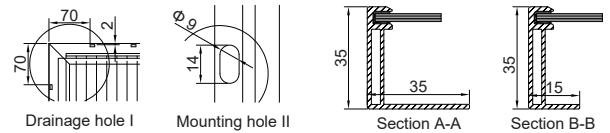
Mechanical and design specification

Cell type	Silicon Heterojunction Technology, Half-cut cells, 210 mm
No. of cells	120
Bifaciality	80±5%
Glass	2.0 mm, high transmission, AR coated, tempered
Encapsulation	POE
Back cover	2.0 mm white glazed glass, tempered
Junction box	IP68 rated, 3 Bypass Diodes
Frame	35 mm anodized Aluminium alloy
Cable	1 x 4 mm ² , 200 mm length or customized
Connectors	MC 4 / MC 4 compatible
Dimension	2171 mm x 1302 mm x 35 mm
Weight	35.5 kg
Hail resistance	Max. Ø 25 mm at 23 m/s
Wind load	2400 Pa/ 244 kg/ m ²
Mechanical load	5400 Pa/ 550 kg/ m ²



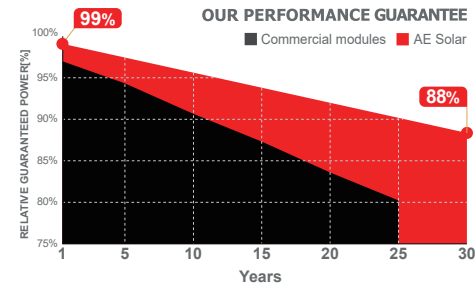
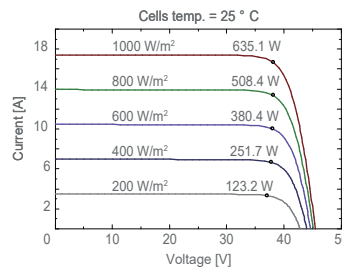
Packaging information

Packaging configuration	31 pcs / pallet
Loading capacity	558 pcs / 40 HQ
Size / Pallet	1350 mm x 1145 mm x 2310 mm (upright)
Weight	1162 kg / pallet



Temperature ratings

Operating temperature	(°C)	-40 to +85
Temp.coefficient of P _{max}	(%/°C)	-0.26
Temp.coefficient of V _{oc}	(%/°C)	-0.24
Temp.coefficient of I _{sc}	(%/°C)	0.04
Nom. operating temp. NOCT	(°C)	44 ± 2



Electrical specifications (STC*): AE615TME-120BDS AE620TME-120BDS AE625TME-120BDS AE630TME-120BDS AE635TME-120BDS

	P _{max} (Wp)	615	620	625	630	635
Nominal Max. Power	P _{max} (Wp)	615	620	625	630	635
Maximum operating voltage	V _{MPP} (V)	37.53	37.69	37.86	38.03	38.19
Maximum operating current	I _{MPP} (A)	16.39	16.45	16.51	16.57	16.63
Open-circuit voltage	V _{oc} (V)	44.77	44.95	45.13	45.30	45.48
Short-circuit current	I _{sc} (A)	17.19	17.25	17.31	17.37	17.43
Module efficiency	η (%)	21.76	21.93	22.11	22.29	22.46
Power tolerance	(W)			0~+5		
Maximum system Voltage	(V)			1500		
Maximum series fuse rating	(A)			35		

*STC: Standard test conditions (Irradiance 1000 W/m², Cell temperature 25°C and air mass of AM1.5)

Electrical specifications (NMOT*): AE615TME-120BDS AE620TME-120BDS AE625TME-120BDS AE630TME-120BDS AE635TME-120BDS

	P _{max} (Wp)	461	465	468	472	476
Nominal Max. Power	P _{max} (Wp)	461	465	468	472	476
Maximum operating voltage	V _{MPP} (V)	35.14	35.33	35.49	35.64	35.80
Maximum operating current	I _{MPP} (A)	13.12	13.16	13.21	13.26	13.30
Open-circuit voltage	V _{oc} (V)	41.91	42.12	42.31	42.50	42.69
Short-circuit current	I _{sc} (A)	13.75	13.80	13.85	13.90	13.94

*NMOT: Normal Module Operating Temperature (Irradiance 800 W/m², Ambient temperature 20°C, air mass of AM1.5 and wind speed of 1 m/s)

The specifications and characteristics contained in this datasheet may deviate slightly from our actual products due to the product developments and uncertainty of measurement devices. The specifications included in the datasheet are subject to change without prior notice.

