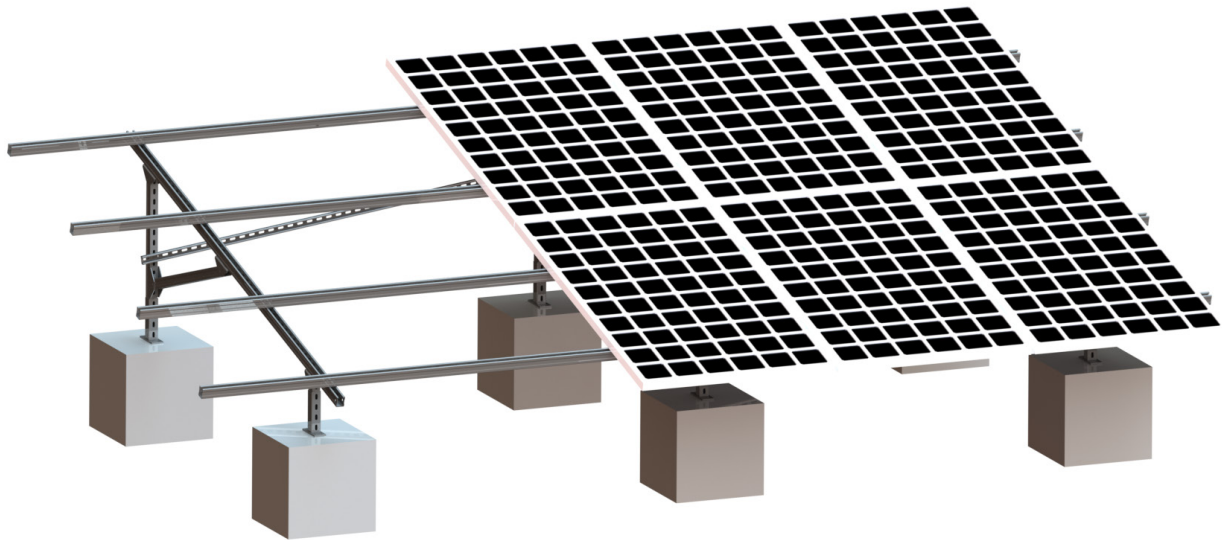


MGC 地面钢结构支架系统

MGC Steel ground mounting system



技术参数

安装地点: 户外开阔地面、平屋顶
 固定方式: 螺旋地桩/混凝土
 安装角度: 0~35°
 标准风速: 34m/s
 最大风速: 55m/s
 标准积雪: 800mm
 设计标准: JISC8955:2017,
 GB50009-2012, GB50797-2012
 支架系统材质: Q235B
 紧固件材质: SUS 304

产品特性

- 1、兼容性强
- 2、超高性价比
- 3、专利系统配件设计
- 4、高强度碳钢材质
- 5、安装方便简捷

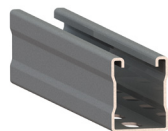
Technical specification

Installation place: Cement roof
 or flat ground
 Fixed way: Ground screw/Con-
 crete base
 Installation angle: 0~35°
 Standard wind: 34m/s
 Max wind: 55m/s
 Standard snow: 800mm
 Design standard: JISC
 8955:2017, GB50009-2012,
 GB50797-2012
 Main material: Q235B
 Fastener material: SUS 304

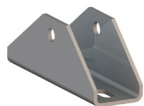
Advantage

- 1、Strong compatibility
- 2、High cost performance
- 3、Patent design
- 4、High-strength carbon steel
- 5、Easy to install

零部件
Components



导轨_斜梁
Rail_beam



三角连接件
Triangle joiner



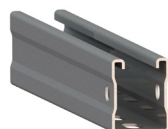
后斜拉
Rear diagonal tie



斜撑
Diagonal support

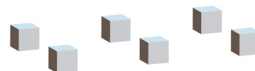


立柱底座
Column foundation

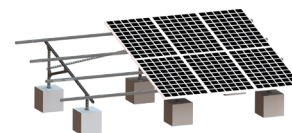


立柱
Column

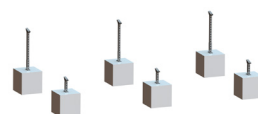
安装步骤
Installation step



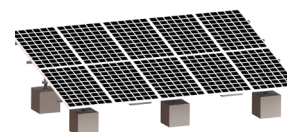
第一步 基础安装
First Install the pile/
concrete base



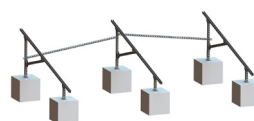
第五步 组件安装
Fifth Install the panel



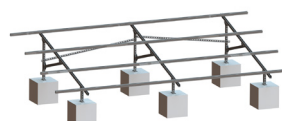
第二步 立柱安装
Second Install the
column



第六步 安装完成
Sixth Complete.



第三步 纵梁安装
Third Install the
beam



第四步 导轨安装
Fourth Install the rail