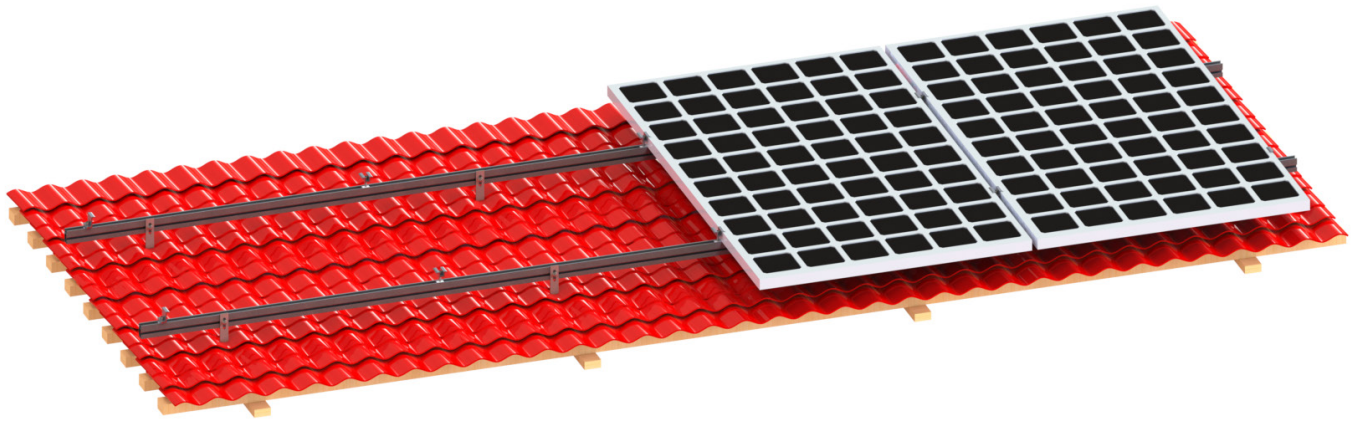


MRA 1-RF2 瓷瓦屋顶铝支架系统

MRA 1- RF2 Tile roof mounting system



技术参数

安装地点: 瓷瓦
固定方式: 弯钩
安装角度: 0°
标准风速: 35m/s
标准积雪: 200mm
最大积雪: 1200mm
设计标准: JISC8955:2017,
GB50009-2012, GB50797-2012
支架系统材质: AL6005-T5
紧固件材质: SUS 304

产品特性

- 1、高强度铝合金材质
- 2、超轻量化设计
- 3、安装方便简捷

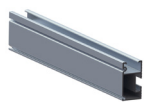
Technical specification

Installation place: Tile roof
Fixed way: Hook
Installation angle: 0°
Standard wind: 35m/s
Standard snow: 200mm
Max snow: 1200mm
Design standard: JISC
8955:2017, GB50009-2012,
GB50797-2012
Main material: AL6005-T5
Fastener material: SUS 304

Advantage

- 1、High-strength aluminum
- 2、Ultra light-weight design
- 3、Easy to install

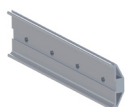
零部件
Components



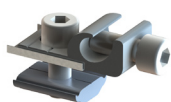
导轨
Rail



导电片
Earthing plate



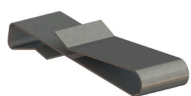
导轨连接件
Rail joiner



接地件
Earthing lug



直立挂钩
Hook



线夹
Cable clip



中压块
Mid clamp



边压块
End clamp

Option 1



侧立挂钩
Side hook



双可调平挂钩
Double adjustable flat hook



可调侧立挂钩
Adjustable side hook



直立可调挂钩
Adjustable hook



可调平行挂钩
Adjustable flat hook