

Polar Bear III

Flat Roof Mounting System

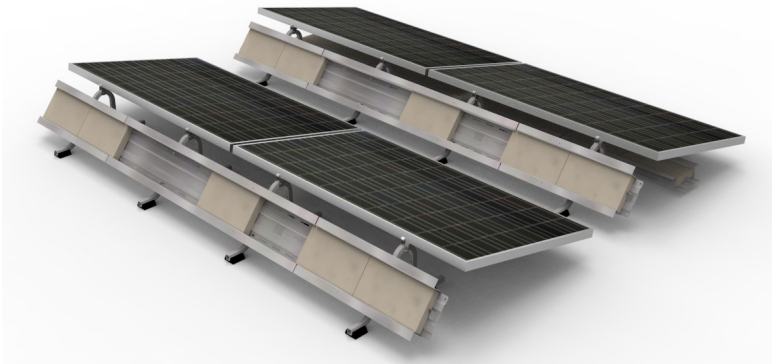
PRODUCT AND COST EVOLUTION



System Level Approach

Low-cost mounting components provide savings early in the project development process. However, when you are looking to lower the total installed cost, from delivery to a fully wired system, details make the difference. Polar Bear® III combines critical system features, A-to-Z project support, and long-term product reliability into a single low-cost platform. The system components, delivery, and installation procedures have been jointly designed to deliver a lower total cost and better service experience.

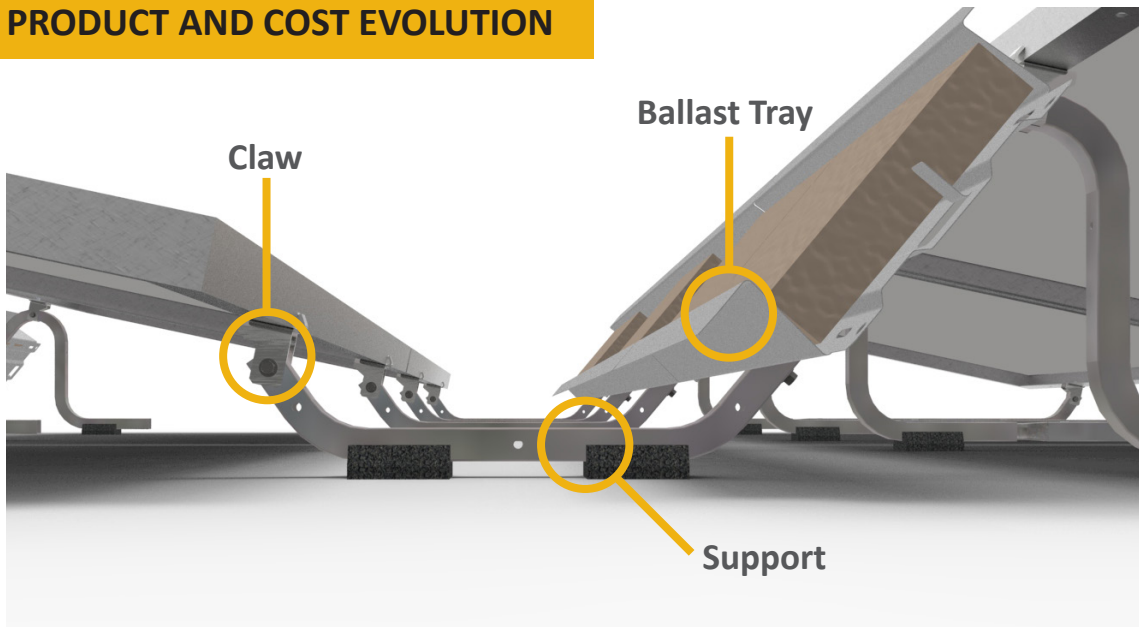
The Polar Bear® III takes the best features, service, and reliability from PanelClaw's earlier flat roof systems and combines them into a single platform.



Polar Bear III Flat Roof Mounting System 10 Degree



PRODUCT AND COST EVOLUTION



Trusted Roof Integrity

Polar Bear® III reduces potential long-term roof damage with fully captured ballast, integrated roof protection pads and a system design that allows for free water flow.

Accelerated Construction

The engineered design emphasizes built-in features to improve construction efficiencies:

- Three major components, light-weight and easy to move
- Pre-installed bolts to quickly mount Ballast Trays
- Single-module tilt-up to facilitate must-have access to roof, wiring and maintenance

Safety and Reliability

Polar Bear III is the result of PanelClaw's data-driven test program to improve PV reliability. Polar Bear III is proven technology based on hundreds of megawatts of project experience.

Three Components

Support

- Easy-to-handle components that weigh less than 2.5 pounds
- Integrated recycled rubber roof protection pads
- Pre-drilled holes for wire management cabling options

Ballast Tray

- Angled fit with locking end-tab to fully capture ballast blocks
- Hemmed edges and chamfered corners prevent wiring from coming into contact with sharp edges

Claw

- Attachment to module using standard module mounting holes
- UL 2703 certified for electric bonding and grounding

Applications

Flat roof (max slope 5°)

Fully ballasted or mechanically attached

Module Tilt Angle

10° nominal

Shading Ratio

2.3:1 and 2.7:1

Module-to-Module Spacing

21.88" and 18.38"

Platform Load

~1.9 - 8 psf

Module Orientation

Landscape

Module Attachment

Standard module mounting holes

Basic Wind Speed

Up to 120 mph
(>120 mph by approval)

Wind Exposure Category

B and C (D by approval)

Seismic Compatibility

C, D, E and F

Warranty and Certifications

25 year warranty

UL 2703 certification

System Fire Rating
Class A with Type 1 and
Type 2 modules



Made in USA

© 2015 PanelClaw, Inc.

(978) 688.4900 | sales@panelclaw.com



Printed on recycled paper