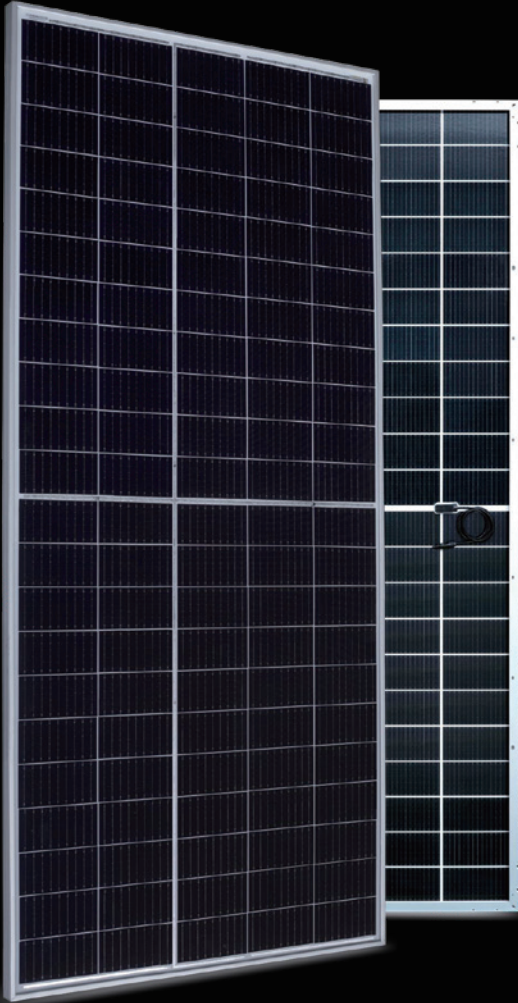




AESOLAR

since 2003



COMET

enrich your energy yield

30
years
Performance
Guarantee

15
years
Product
Guarantee

560W-580W

AE TME-110BDS Series

SILICON HETEROJUNCTION PV MODULES
HALF-CUT CELLS • BIFACIAL • DOUBLE-GLASS

www.ae-solar.com

110

HALF
CELLS

210
mm

CELL
SIZE



LID
RESISTANT



PID
RESISTANT



SALT CORROSION
RESISTANT



SAND
RESISTANT



AMMONIA
RESISTANT

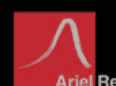


HIGHLY STABLE
AND TOUGH



IEC 61215
IEC 61730
Regular Production Surveillance
Type Tested and Monitored

IEC 62716 (Ammonia corrosion)
IEC 61701 (Salt mist corrosion)
IEC 60068 (Sand and dust)
IEC 62804 (PID resistance)



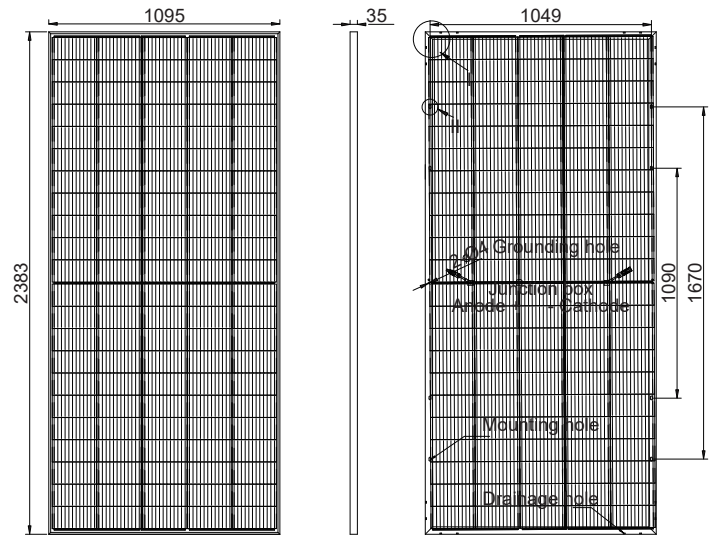
AE TME-110BDS Series 560W-580W



SILICON HETEROJUNCTION PV MODULES
 HALF-CUT CELLS • BIFACIAL • DOUBLE-GLASS

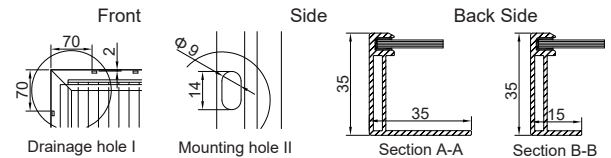
Mechanical and design specification

Cell type	Silicon Heterojunction Technology, Half-cut cells, 210 mm
No. of cells	110
Bifaciality	80±5%
Glass	2.0 mm, high transmission, AR coated, tempered
Encapsulation	POE
Back cover	2.0 mm white glazed glass, tempered
Junction box	IP68 rated, 3 Bypass Diodes
Frame	35 mm anodized Aluminium alloy
Cable	1 x 4 mm ² , 200 mm length or customized
Connectors	MC 4 / MC 4 compatible
Dimension	2383 mm x 1095 mm x 35 mm
Weight	32.5 kg
Hail resistance	Max. Ø 25 mm at 23 m/s
Wind load	2400 Pa/ 244 kg/ m ²
Mechanical load	5400 Pa/ 550 kg/ m ²



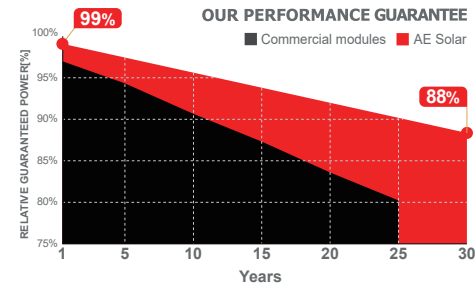
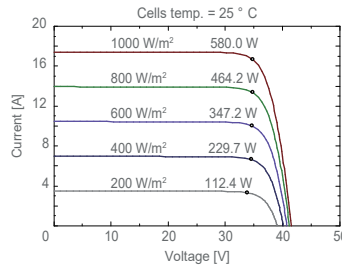
Packaging information

Packaging configuration	31 pcs / pallet
Loading capacity	620 pcs / 40 HQ
Size / Pallet	1130 mm x 1140 mm x 2500 mm (upright)
Weight	1040 kg / pallet



Temperature ratings

Operating temperature	(°C)	-40 to +85
Temp.coefficient of P _{max}	(%/°C)	-0.26
Temp.coefficient of V _{oc}	(%/°C)	-0.24
Temp.coefficient of I _{sc}	(%/°C)	0.04
Nom. operating temp. NOCT	(°C)	44 ± 2



Electrical specifications (STC*): AE560TME-110BDS AE565TME-110BDS AE570TME-110BDS AE575TME-110BDS AE580TME-110BDS

	P _{max} (Wp)	560	565	570	575	580
Nominal Max. Power	P _{max} (Wp)	560	565	570	575	580
Maximum operating voltage	V _{MPP} (V)	34.17	34.35	34.53	34.71	34.88
Maximum operating current	I _{MPP} (A)	16.39	16.45	16.51	16.57	16.63
Open-circuit voltage	V _{oc} (V)	40.77	40.96	41.16	41.35	41.54
Short-circuit current	I _{sc} (A)	17.19	17.25	17.31	17.37	17.43
Module efficiency	η (%)	21.46	21.65	21.84	22.04	22.23
Power tolerance	(W)			0~+5		
Maximum system Voltage	(V)			1500		
Maximum series fuse rating	(A)			35		

*STC: Standard test conditions (Irradiance 1000 W/m², Cell temperature 25°C and air mass of AM1.5)

Electrical specifications (NMOT*): AE560TME-110BDS AE565TME-110BDS AE570TME-110BDS AE575TME-110BDS AE580TME-110BDS

	P _{max} (Wp)	420	423	427	431	435
Nominal Max. Power	P _{max} (Wp)	420	423	427	431	435
Maximum operating voltage	V _{MPP} (V)	32.03	32.20	32.37	32.53	32.70
Maximum operating current	I _{MPP} (A)	13.11	13.16	13.21	13.26	13.30
Open-circuit voltage	V _{oc} (V)	38.18	38.38	38.59	38.79	39.00
Short-circuit current	I _{sc} (A)	13.75	13.80	13.85	13.90	13.94

*NMOT: Normal Module Operating Temperature (Irradiance 800 W/m², Ambient temperature 20°C, air mass of AM1.5 and wind speed of 1 m/s)

The specifications and characteristics contained in this datasheet may deviate slightly from our actual products due to the product developments and uncertainty of measurement devices. The specifications included in the datasheet are subject to change without prior notice.

