

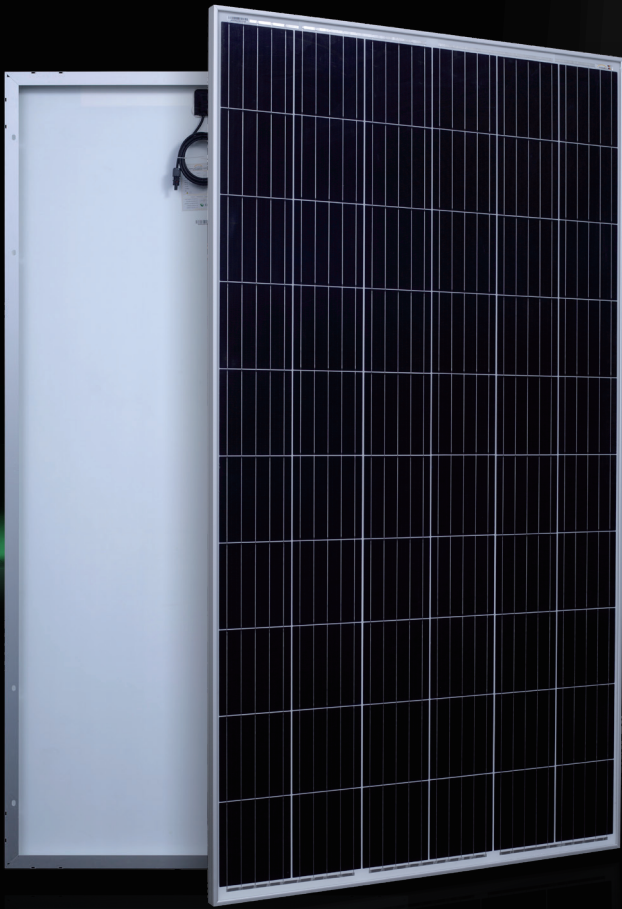
Deutsche  
Qualität  
Garantiert

**TIER 1**  
BloombergNEF



**AESOLAR**

since 2003



**AURORA**

**HIGH** ENERGY YIELD  
RELIABILITY  
DURABILITY

**30**  
years  
Performance  
Guarantee

**15**  
years  
Product  
Guarantee

**320W-335W**  
AE MB-60 Series

MONO-CRYSTALLINE PV MODULES  
FULL CELLS • MONO-FACIAL

[www.ae-solar.com](http://www.ae-solar.com)

**60**

FULL  
CELLS

**158**  
mm

CELL  
SIZE



LID  
RESISTANT



PID  
RESISTANT



SALT CORROSION  
RESISTANT



SAND  
RESISTANT



AMMONIA  
RESISTANT

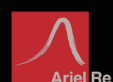


HIGHLY STABLE  
AND TOUGH



IEC 61215  
IEC 61730  
Regular Production Surveillance  
Type Tested and Monitored

IEC 62716 (Ammonia corrosion)  
IEC 61701 (Salt mist corrosion)  
IEC 60068 (Sand and dust)  
IEC 62804 (PID resistance)



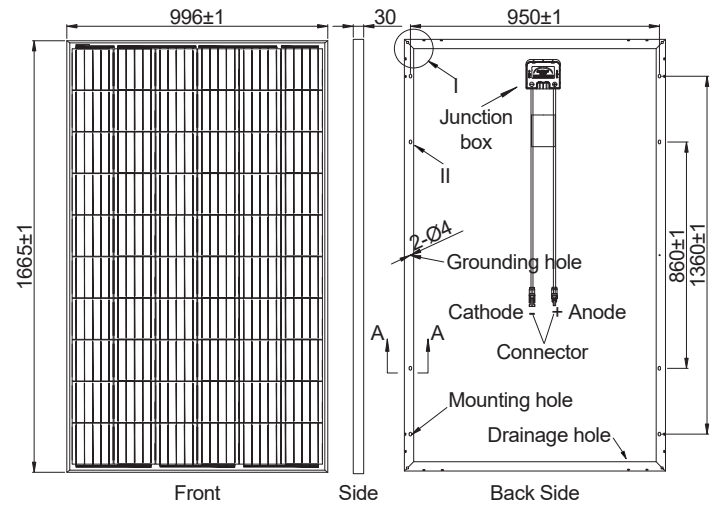
# AE MB-60 Series 320W-335W



MONO-CRYSTALLINE PV MODULES  
FULL CELLS • MONO-FACIAL

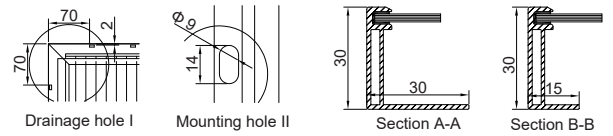
## Mechanical and design specification

Cell type	Mono c-Si PERC, Full cells, 158.75 mm
No. of cells	60
Glass	3.2 mm, high transmission, AR coated, tempered
Encapsulation	EVA
Back cover	White Backsheet
Junction box	IP68 rated, 3 Bypass Diodes
Frame	30 mm anodized Aluminium alloy
Cable	1 x 4 mm <sup>2</sup> , 900 mm length or customized
Connectors	MC 4 / MC 4 compatible
Dimension	1665 mm x 996 mm x 30 mm
Weight	17.2 kg
Hail resistance	Max. Ø 25 mm at 23 m/s
Wind load	2400 Pa/ 244 kg/ m <sup>2</sup>
Mechanical load	5400 Pa/ 550 kg/ m <sup>2</sup>



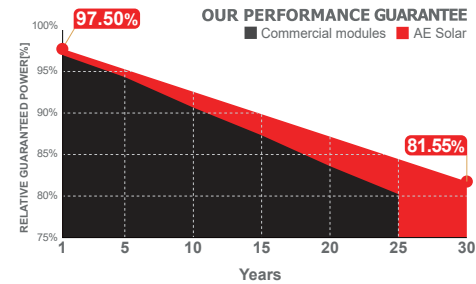
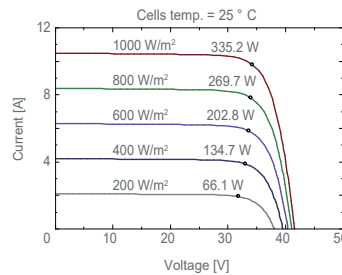
## Packaging information

Packaging configuration	76 pcs / double pallets
Loading capacity	1064 pcs / 40 HQ
Size / Pallet	1695 mm x 1140 mm x 2395 mm
Weight	1379 kg / double pallets



## Temperature ratings

Operating temperature	(°C)	-40 to +85
Temp. coefficient of P <sub>max</sub>	(%/°C)	-0.370
Temp. coefficient of V <sub>oc</sub>	(%/°C)	-0.280
Temp. coefficient of I <sub>sc</sub>	(%/°C)	0.048
Nom. operating temp. NOCT	(°C)	45 ± 2



Electrical specifications (STC*):	AE320MB-60	AE325MB-60	AE330MB-60	AE335MB-60	
Nominal Max. Power	P <sub>max</sub> (Wp)	320	325	330	335
Maximum operating voltage	V <sub>MPP</sub> (V)	33.40	33.61	33.81	34.02
Maximum operating current	I <sub>MPP</sub> (A)	9.59	9.68	9.76	9.85
Open-circuit voltage	V <sub>oc</sub> (V)	40.90	41.10	41.31	41.49
Short-circuit current	I <sub>sc</sub> (A)	10.15	10.20	10.37	10.49
Module efficiency	η (%)	19.30	19.60	19.90	20.20
Power tolerance	(W)	0~+5			
Maximum system Voltage	(V)	1500			
Maximum series fuse rating	(A)	15			

\*STC: Standard test conditions (Irradiance 1000 W/m<sup>2</sup>, Cell temperature 25°C and air mass of AM1.5)

Electrical specifications (NMOT*):	AE320MB-60	AE325MB-60	AE330MB-60	AE335MB-60	
Nominal Max. Power	P <sub>max</sub> (Wp)	241	245	248	252
Maximum operating voltage	V <sub>MPP</sub> (V)	31.40	31.60	31.80	32.00
Maximum operating current	I <sub>MPP</sub> (A)	7.67	7.74	7.81	7.88
Open-circuit voltage	V <sub>oc</sub> (V)	37.70	37.90	38.10	38.30
Short-circuit current	I <sub>sc</sub> (A)	8.12	8.16	8.30	8.39

\*NMOT: Normal Module Operating Temperature (Irradiance 800 W/m<sup>2</sup>, Ambient temperature 20°C, air mass of AM1.5 and wind speed of 1 m/s)

The specifications and characteristics contained in this datasheet may deviate slightly from our actual products due to the product developments and uncertainty of measurement devices. The specifications included in the datasheet are subject to change without prior notice.

