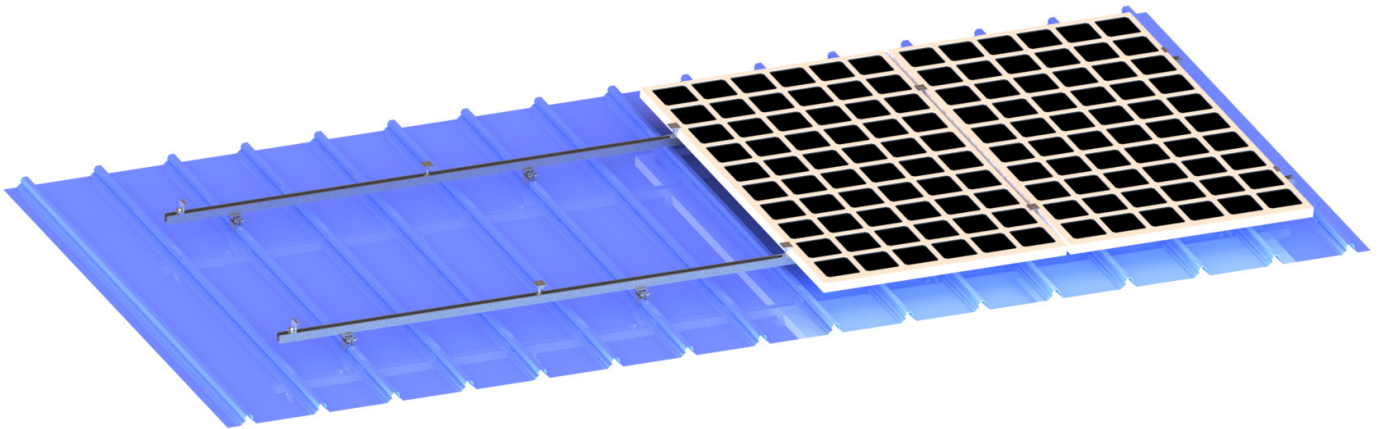


# MRA 2-CR 角驰型彩钢瓦屋顶铝支架系统

## MRA 2-CR Cliplok tin roof mounting system



### 技术参数

安装地点: 角驰/直立锁边彩钢瓦  
 固定方式: 夹具  
 安装角度: 0°  
 最大风速: 88m/s  
 最大积雪: 800mm  
 设计标准: JISC 8955:2017,  
 GB50009-2012, GB50797-2012  
 , AS/NZS1170

支架系统材质: AL6005-T5  
 紧固件材质: SUS 304

### 产品特性

- 1、高强度铝合金材质
- 2、超轻量化设计
- 3、安装方便简捷

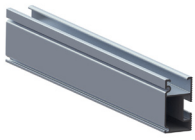
### Technical specification

Installation place: Cliplok/  
 Seamlok Tin roof  
 Fixed way: Clamp  
 Installation angle: 0°  
 Max wind: 88m/s  
 Max snow: 800mm  
 Design standard: JISC  
 8955:2017, GB50009-2012,  
 GB50797-2012, AS/NZS1170  
 Main material: AL6005-T5  
 Fastener material: SUS 304

### Advantage

- 1、High-strength aluminum
- 2、Ultra light-weight design
- 3、Easy to install

零部件  
Components



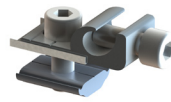
导轨  
Rail



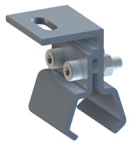
边压块  
End clamp



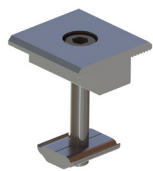
导轨连接件  
Rail joiner



接地件  
Earthing lug

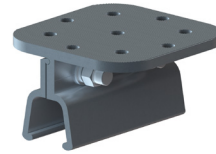


夹具  
Clamp

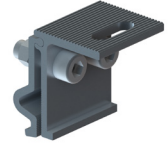


中压块  
Mid clamp

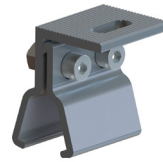
Option 1



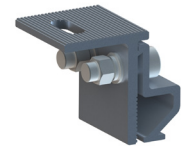
角驰HCR01  
Cliptlok HCR01



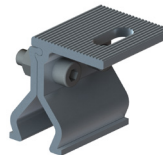
直立 HSM01  
Seamllok HSM01



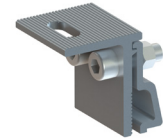
角驰HCR02  
Cliptlok HCR02



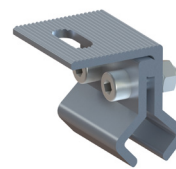
直立 HSM02  
Seamllok HSM02



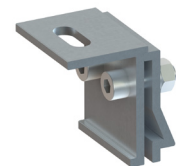
角驰HCR03  
Cliptlok HCR03



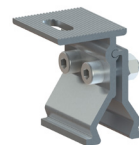
直立 HSM03  
Seamllok HSM03



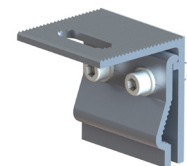
角驰HCR04  
Cliptlok HCR04



直立 HSM04  
Seamllok HSM04



角驰HCR05  
Cliptlok HCR05



直立 SM03  
Seamllok SM03