

# Blue

Air-cooled Containerised Energy Storage System Blue Series  
Blue 1720k-T500kA (20')~Blue 4300k-T500kA (40')



This product series are of modular, strings and smart energy storage system design.



The overall degrees of protection shall not be lower than Ip55.



Customized development, Meeting different customer needs



Product in this series enables independent detection for each cell, independent safety management of each battery module, anti-circulation and anti-counter-current between battery clusters. Meanwhile, it also facilitates active equalization, DC side hierarchical multi-level short-circuit protection, local control fast linkage protection, etc.



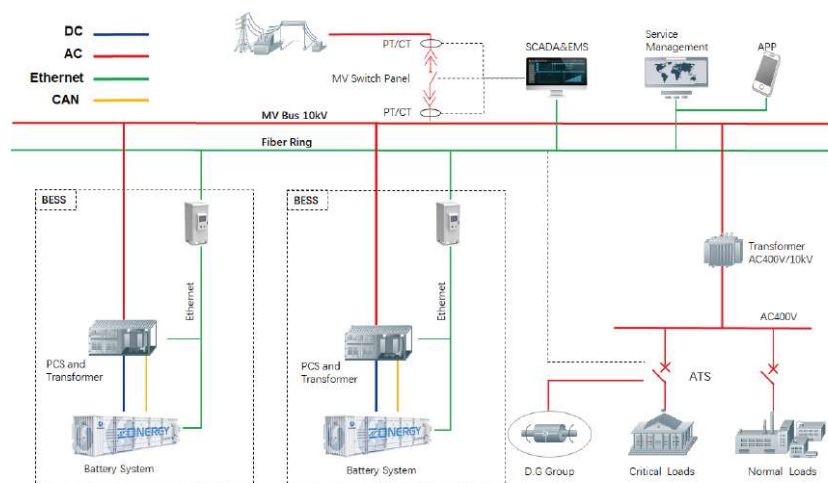
The grid supports LVRT, HVRT, ZVRT, islanding detection, active and reactive power regulation, PF control, slow start/shut down.



This product series support LAN local monitoring, 4G remote IoT, and cloud platform.

Blue 1720k-T500kA (20')~Blue 4300k-T500kA (40')  
Technical parameters

Typical Technical Parameters:	Blue 1720k-T500kA (20')	Blue 4300k-T500kA (40')
AC (grid connection)		
Rated output power	500/630 kW	1250 kW
Rated voltage	400 V	600 V
Rated current	721 A	1323 A (MAX)
Rated frequency	50/60 Hz	50/60 Hz
Frequency range	49.5 Hz ~ 50.2 Hz	49.5 Hz ~ 50.2 Hz
Power factor	1 Lead ~1 Lag (settable)	1 Lead ~1 Lag (settable)
AC (off-grid)		
Rated voltage	400 V	600 V
Rated frequency	50/60 Hz	50/60 Hz
Overload capability	110% Long-term	110% Long-term
Energy storage system		
Cell type	LFP 280 Ah	LFP 280 Ah
Nominal voltage	768 V	768 V
Voltage range	672~864 V	672~864 V
Rated energy	1720 kWh (8 clusters)	4300 kWh (20 clusters)
General data		
Max efficiency	87.00%	88.00%
Protection grade	IP54	IP54
Noise	<65dB	<65dB
Ambient temperature	-30°C ~ +55°C	-30°C ~ +55°C
Cooling method	Air cooling	
Relative humidity	0~95% non-condensing	0~95% non-condensing
Altitude	5000m (above 3000m reduction)	5000m (above 3000m reduction)
Compartment form	Electrical and battery compartments in separate compartments	
Dimensions (L*W*H)	6058*2438*2896 mm	12198*2438*2896 mm
Isolation transformer	Yes	
Display	Touch LCD display	
System communication interface	RS485, Ethernet	
System communication protocols	Modbus RTU, Modbus TCP	
Altitude	5000m (above 3000m reduction)	
Compartment form	Electrical and battery compartments in two containers	
Dimensions (L*W*H)	6058*2438*2896mm Electrical compartment 6058*2438*2896mm Battery compartment	6058*2438*2896mm Electrical compartment 12198*2438*2896mm Battery compartment
Isolation transformer	Yes	
Display	Touch LCD display	
System communication interface	RS485, Ethernet	
System communication protocols	Modbus RTU, Modbus TCP	



Note: Technical parameters listed hereunder are for reference only. Actual parameters shall be subject to products shipped.

# Blue

Liquid-cooled Containerised Energy Storage System Blue Series  
Blue 1290k-T500kA-Blue 3440k-T1725kA



This product series are of modular, strings and smart energy storage system design.



The overall degrees of protection shall not be lower than Ip55.



Customized development,  
Meeting different customer needs



Product in this series enables independent detection for each cell, independent safety management of each battery module, anti-circulation and anti-counter-current between battery clusters. Meanwhile, it also facilitates active equalization, DC side hierarchical multi-level short-circuit protection, local control fast linkage protection, etc.



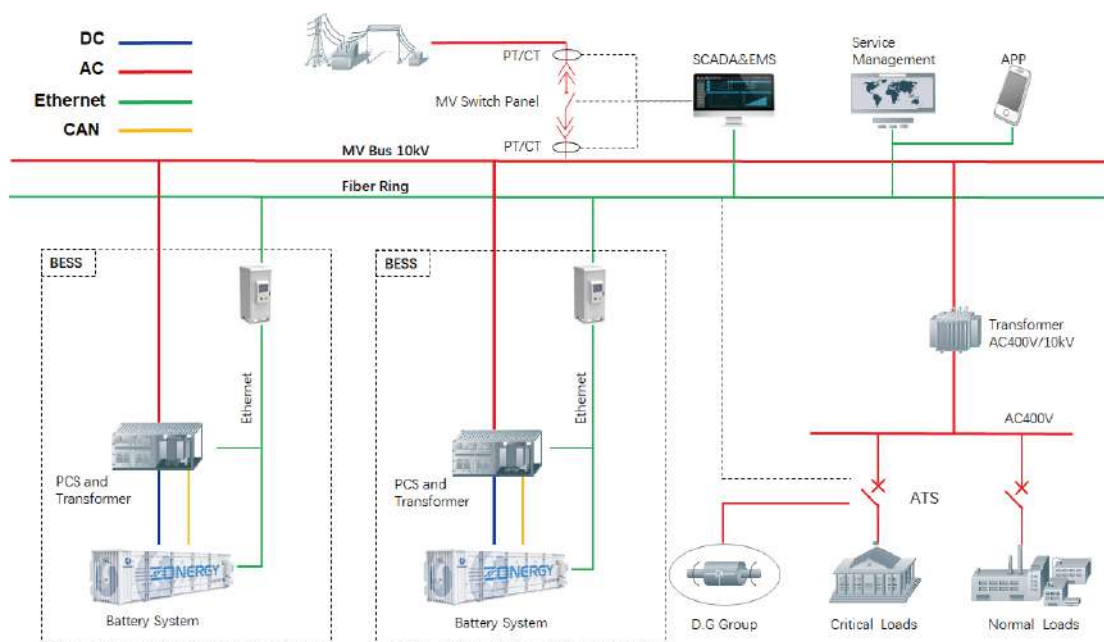
The grid supports LVRT, HVRT, ZVRT, islanding detection, active and reactive power regulation, PF control, slow start/shut down.



This product series support LAN local monitoring, 4G remote IoT, and cloud platform.

Blue 1290k-T500kA-Blue 3440k-T1725kA  
Technical parameters

Technical parameters:	Blue 1290k-T500kA	Blue 2064k-T1250kA	Blue 3440k-T1725kA
AC (grid connection)			
Rated output power	500/630 kW	1250 kW	1725 kW
Rated voltage	400 V	550 V	690 V
Rated current	721A	1375 A	1443 A
Rated frequency	50/60 Hz	50/60 Hz	50/60 Hz
Frequency range	49.5 Hz ~ 50.2 Hz	49.5 Hz ~ 50.2 Hz	49.5 Hz ~ 50.2 Hz
Power factor	1 Lead ~1 Lag (settable)	> 0.99	1 Lead ~1 Lag (settable)
AC (off-grid)			
Rated voltage	400 V	550 V	690 V
Rated frequency	50/60 Hz	50/60 Hz	50/60 Hz
Overload capability	110% Long-term	110% Long-term	110% Long-term
Energy storage system			
Cell type	LFP 280 Ah	LFP 280 Ah	LFP 280 Ah
Nominal voltage	768 V	1228 V	1228 V
Voltage range	672~864 V	1075~1382 V	1075~1382 V
Rated energy	1290 kWh	2064 kWh (12 clusters)	3440 kWh (10 clusters)
General data			
Max efficiency	87.00%	88.00%	88.00%
Protection grade	IP54	IP54	IP54
Noise	<65dB	<65dB	<65 dB
Ambient temperature	-30°C ~ +55°C	-30°C ~ +55°C	-30°C ~ +55°C
Cooling method		Liquid cooling	
Relative humidity	0~95% non-condensing	0~95% non-condensing	0~95% non-condensing
Altitude		5000m (above 3000m reduction)	
Compartment form	Electrical and battery compartments shared		Electrical and battery compartments in separate compartments
Dimensions (L*W*H)	6058*2438*2896 mm	12192mm*2438mm*2896 mm	12192mm*2438mm*2896 mm
Isolation transformer	Yes		
Display	Touch LCD display		
System communication interface	RS485, Ethernet		
System communication protocols	Modbus RTU, Modbus TCP		



Note: Technical parameters listed hereunder are for reference only. Actual parameters shall be subject to products shipped.