

KiloVault® 2V 1000 XLC

Combines Advanced Lead Carbon with Deep Cycle Technology for Cycling Applications



Advanced Technology, Exceptional Value, Deep Cycle Solar Batteries

KiloVault® 2V 1000 XLC is a cost-effective, maintenance-free battery that offers superior performance in off grid or battery backup applications that require larger energy storage.



Maintenance Free

No watering required means greater peace of mind at remote off-grid locations. Low self-discharge rate and no off-gassing allow for safe and worry-free operation.



Super-Fast Charging

Excellent charging acceptance and super fast charge/discharge performance. Also good recovery on deep discharge.



Maximized Cycle Life

Affordable high performance with 2500 Cycles @ 50% depth of discharge. Pay less up front and get lower overall cost per kWh cycle over the life of the battery.



Exceptional PSoC Performance

Off-grid and backup applications aren't always able to fully recharge batteries, leaving them in a partial state of charge. The 2V 1000 XLC is designed specifically for PSoC operations.



Ease of Installation

Vertical or horizontal. Horizontal installation solves the problem of electrolyte stratification. Modular design saves space.



Various Applications

Ideal in cycling and backup power applications. Versatile operation and set up in Smart Grids, Hybrid Power Supply Systems, Street Lamp Power Systems, and Micro Grids.

Electrical Specifications

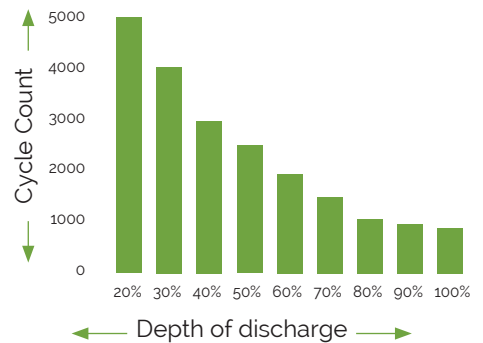
ITEM	SPECS
Model	2V 1000 XLC
Rated Voltage	2V
Nominal Amp-Hour Capacity*	1000Ah
Rated Capacity	2000Wh
Float Charge Voltage	2.25V/Cell
Bulk/Absorption Voltage	2.35V- 2.4V/ Cell
Max Discharge Current	500A (5s)
Max Charge Current	200A per string
Max Configuration	Up to 4 parallel strings of batteries wired in series: 12V: 6 batteries in series per string (max 24) 24V: 12 batteries in series per string (max 48) 48V: 24 batteries in series per string (max 96)
Self Discharge	Batteries can be stored up to 6 months at 25°C (77°F) before a freshening charge is required. For higher temperatures the time interval will be shorter.
Cycle Count	2500 Cycles @ 50% DoD
Warranty	3 Year Limited Warranty

Discharge in Hours	1	3	5	10	20
*Rated Ah Capacity (25° C)	510	750	850	1000	1040

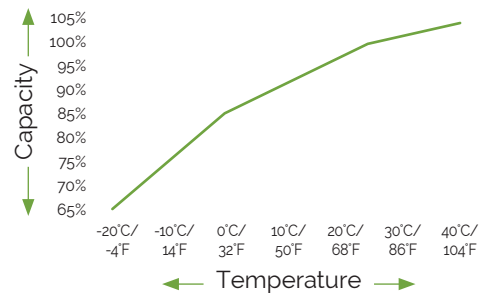
Physical Specifications

ITEM	SPECS
Weight	135 lb (61.2 kg)
Height	14 in (355 mm)
Width	14.5 in (368 mm)
Depth	7.1 in (181 mm)

Cycle Life



Capacity vs. Temperature (Discharge)



Environmental Specifications

ITEM	SPECS
Nominal Operating Temperature Range	77° +/- 5°F (25° +/- 3°C)
Operating Temperature Range	Discharge -4°F - 131°F (-20°C - 55°C) Charge 32°F - 104°F (0°C - 40°C) Storage -4°F - 122°F (-20°C - 50°C)
Terminal	Top Terminal M8
Terminal Hardware Torque	113 in-lbs (13Nm) +/- 5%

