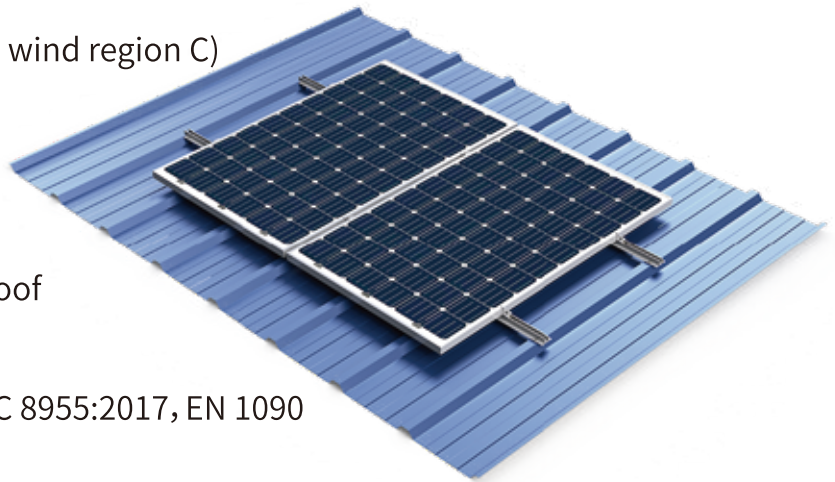


# RAILLESS ROOF MOUNTING SYSTEM ▶

## Design Conditions

- Application: Metal Roof
- Building height: 20M
- Wind speed: Up to 64m/s (Australia wind region C)
- Snow load: 100cm
- PV module: Framed/unframed
- Layout way: Landscape/portrait
- Elevation angle: Flushed with the roof
- Material: 6005-T5+SUS304
- Standard: AS/NZS 1170.2:2011, JIS C 8955:2017, EN 1090
- Warranty: 10 years
- Surface treatment: Anodizing



Mini Rail  
(Panels In Landscape)



Mini Rail  
(Panels In Portrait)



Mid Clamp



End Clamp