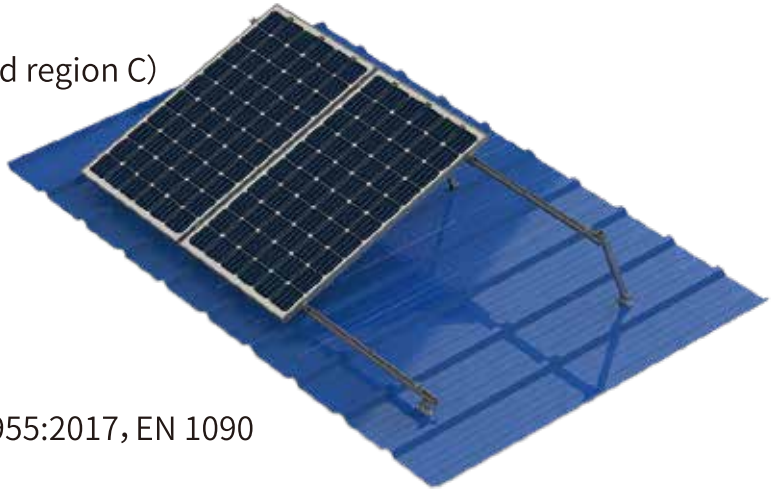


# ADJUSTABLE TILT LEG MOUNTING SYSTEM ▶

## Design Conditions

- Application: Metal roof & Flat concrete roof
- Building height: 20m
- Wind speed: up to 64m/s (Australia wind region C)
- Snow load: 100cm
- PV module: Framed/unframed
- Layout way: Landscape/Portrait
- Elevation: 10-15°, 15-30°, 30-60°
- Material: 6005-T5+SUS304
- Standard: AS/NZS 1170.2:2011, JIS C 8955:2017, EN 1090
- Warranty: 10 years
- Surface treatment: Anodizing



Mid Clamp



End Clamp



Rail



Rail Joiner



Front Leg



Rear Leg