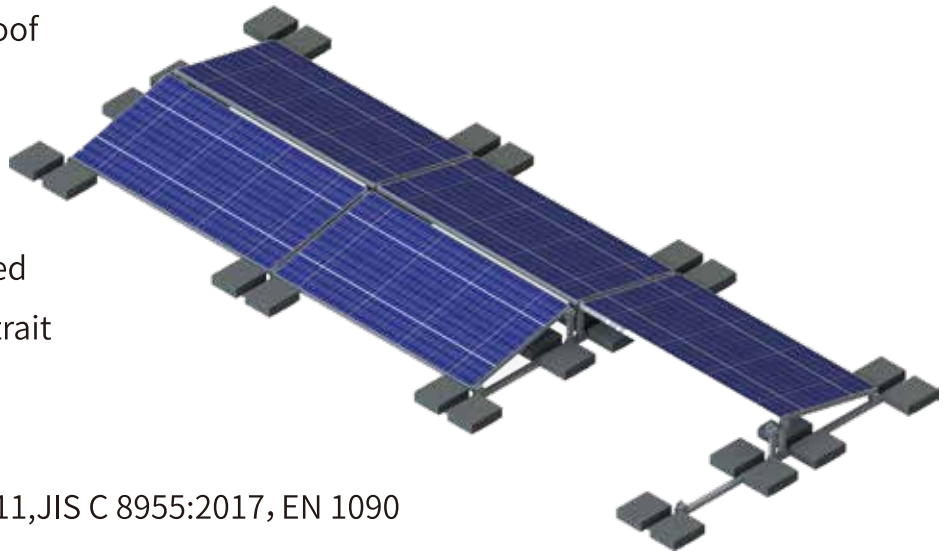


BALLAST MOUNTING SYSTEM ▶

Design Conditions

- Application: Flat Concrete Roof
- Building height: 20M
- Wind speed: Up to 64m/s
- Snow load: 100cm
- PV module: Framed/unframed
- Layout way: Landscape/portrait
- Elevation angle: $\leq 30^\circ$
- Material: 6005-T5+SUS304
- Standard: AS/NZS 1170.2:2011, JIS C 8955:2017, EN 1090
- Warranty: 10years
- Surface treatment: Anodizing



Beam



Base



Rear Fixing



Pole



Front Fixing



Plate