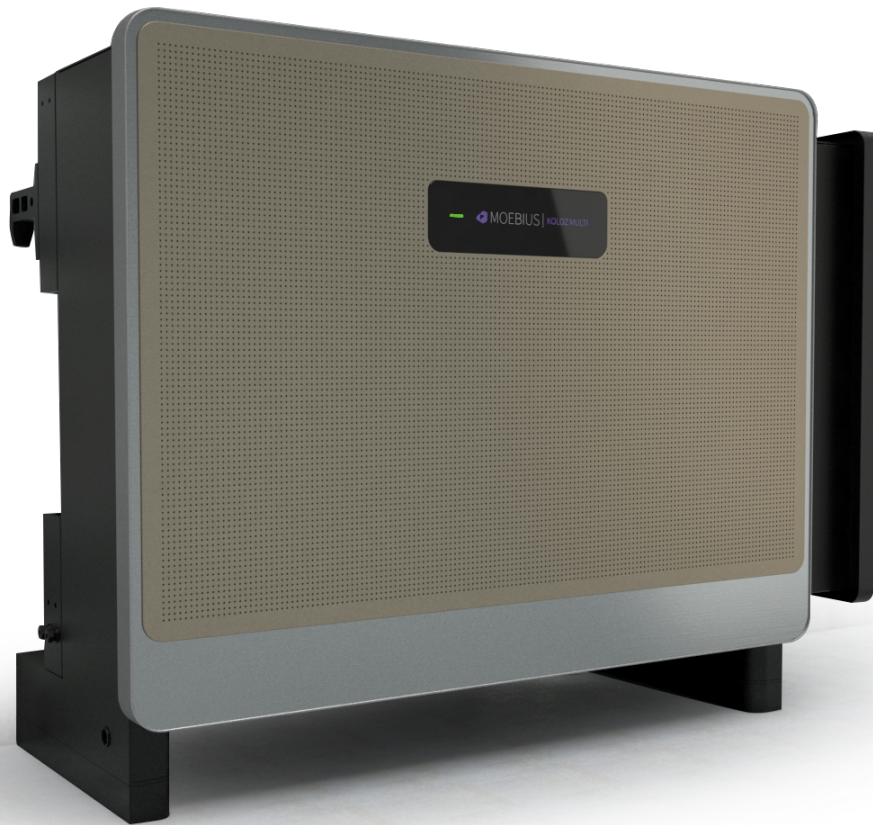




MOEBIUS
Intelligent PV Inverters

KOLOZ MULTI



DATASHEET

KOLOZ-MULTI-110 KVA-9 | KOLOZ-MULTI-125 KVA-9

Designed and manufactured by



DARWIN
RENEWABLE ENERGY INNOVATOR



<i>Efficiency</i>	KOLOZ-MULTI-100K TL-M3	KOLOZ-MULTI-110KTL-M3	KOLOZ-MULTI-125KTL-MH3
Max. Efficiency	98,5%	98,6%	98,8%
EU. Efficiency	98%	98,2%	98,4%
<i>Input (PV)</i>			
Max. Input Voltage	1100 V	1100 V	1100 V
Max. PV configuration (STC)	150%	150%	150%
Max. PV Power (W)	176000	200000	200000
Rated Input Voltage	620 V	620 V	620 V
Max. Input Current	3*40A+5*32A	3*40A+6*32A	3*40A+6*32A
Max. Short Circuit Current	3*50A+5*45A	3*50A+6*45A	3*50A+6*45A
Start Input Voltage	250V / 200V	250V / 200V	250V / 200V
MPPT Operating Voltage Range	200V - 1000V	200V - 1000V	200V - 1000V
Max. Number of PV Strings	18 (9*2)	18 (9*2)	18 (9*2)
No. of MPPTs	9	9	9
<i>Output (Grid)</i>			
Rated AC Active Power	100000W	100000W	125000 W
Max. AC Apparent Power	110000 VA	121000 VA	137500 VA
Max. AC Active Power (PF=1)	110000 W	121000 W	137500 W
Max. AC Output Current	3*168,8 A	3*187A	3*167,3A
Rated AC Voltage	400V, 3W+N+PE	400V, 3W+N+PE	480V, 3W+PE
AC Voltage Range (1)	277V-520V (Adjustable)	277V-520V (Adjustable)	300V-550V (Adjustable)
Rated Grid Frequency	50 Hz / 60 Hz	50 Hz / 60 Hz	50 Hz / 60 Hz
Grid Frequency Range (2)	45Hz-55Hz/55Hz 65Hz (Adjustable)	45Hz-55Hz / 55 Hz-65 Hz (Adjustable)	45Hz-55Hz / 55 Hz-65 Hz (Adjustable)
THDI	<3%@Rated Power	<3%@Rated Power	<3%@Rated Power
DC Current Injection	<0,5%@In	<0,5%@In	<0,5%@In
Power Factor	>0,99 Rated Power (Adjustable 0,8 LD-0,8 LG)	>0,99 Rated Power (Adjustable 0,8 LD-0,8 LG)	>0,99 Rated Power (Adjustable 0,8 LD-0,8 LG)

KOLOZ-MULTI-100K TL-M3 | KOLOZ-MULTI-110KTL-M3 | KOLOZ-MULTI-125KTL-MH3

<i>General</i>		<i>Packaging & logistics</i>	
Topology	Transformerless	Carton packaging dimension (W x H x D)	657 x 622 x 314 mm
IP Rating	IP66	G.W. (Gross Weight)	30,5
Night Self Consumption	< 10 W	Qty per pallet (pcs)	6+6
Cooling	Fan Cooling	Pallet Dimension (W X H X D)	1250 x 750 x 2110
Operating Temperature Range	-25°C - 60°C	Pallet m ³ (CBM)	2,0 m ³
Relative Humidity Range	0 - 100 %	20 ft cont. Pallet Qty (Plt) / product Qty (pcs)	26 pallets / 156 pallets
Max. Operating Altitude	4000 m	40 ft cont. Pallet Qty (Plt) / product Qty (pcs)	54 pallets / 324 pallets
Noise (typical)	<75dB		
Dimensions (W x H x D)	850 x 670 x 356 mm		
N.W. (Netto Weight)	85 kg		

Protection

DC switch	Support
Anti-islanding protection	Support
AC Overcurrent protection	Support
AC short circuit protection	Support
DC reverse connection	Support
Surge Arrester	DC Type II / AC Type II
Insulation detection	Support
Leakage current protection	Support
AFCI	Optional
PID Recovery	Optional
PV String monitoring	Optional
Night load consumption monitoring	Optional

HMI & COM

Display	Wireless & APP + LED, LCD (Optional)
Communication	RS485, Optional: WiFi / GPRS / 4G / LAN

Warranty

5 years, 10 years when installed by Darwin registered installer

Certification

Safety	IEC62109-1, IEC62109-2
Grid Code	VDE-AR-N 4105, VDE-AR-N-4110 ,EN 50549-1, CEI 0-21, UNE 206006/206007-1, UNE 217001

