



*Landscape Layout
With orientation-inclination change*

FEATURES

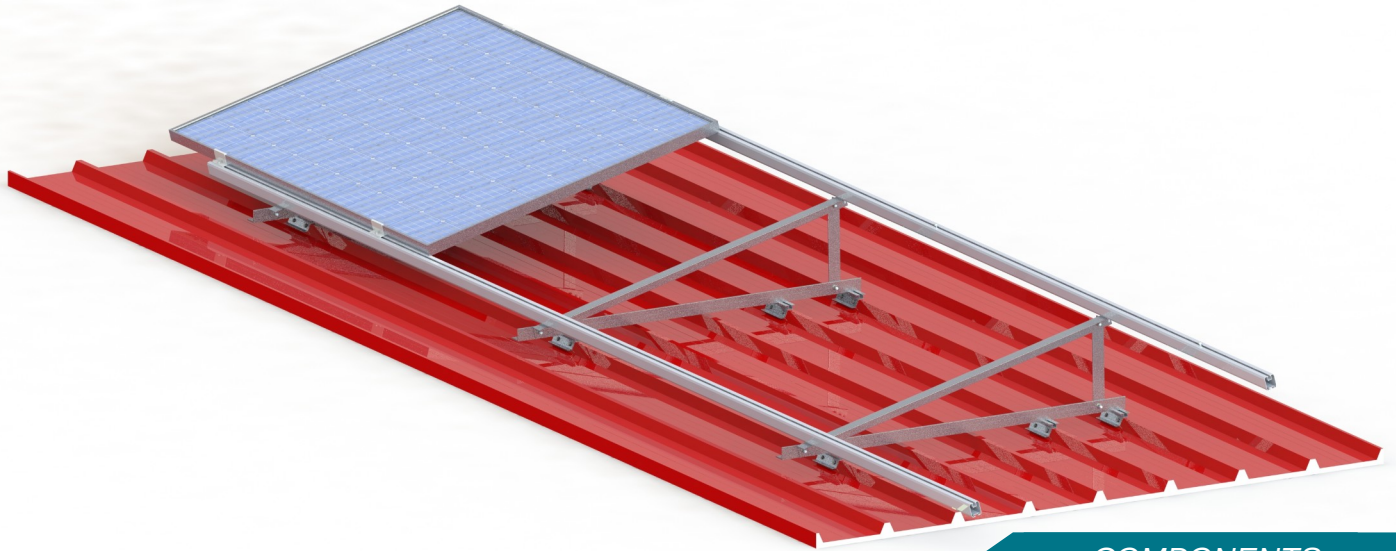
<i>Application</i>	Industrial Roofs
<i>Materials</i>	Aluminum
<i>Accessories</i>	High Quality INOX or Galvanized ones
<i>Orientation</i>	Landscape
<i>Anchoring</i>	Self-drilling screws on the roof panel
<i>Standard</i>	Eurocodes & National Annexes
<i>Mb_{max} for rail</i>	0.7 kNm
<i>Wind Load Limit</i>	33 m/s (Terrain Category I)
<i>Snow Load Limit</i>	1.7 kN/m² (Zone C)



METALOUMIN
ALUMINIUM SYSTEMS SINCE 1969

MOUNTING SYSTEM FOR PITCHED ROOFS

M-IR-381L



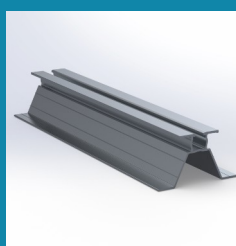
COMPONENTS



1. Pv Rail



2. End Clamp



3. Part SL64a



4. Bi-Metal Screw



**5. Triangular
Mounting
System**

