

**MOUNTING SYSTEM WITH BALLASTS  
FOR FLAT ROOF APPLICATIONS**

**M-FR-531L**



*1 Panels in Height  
Landscape Layout*

**FEATURES**

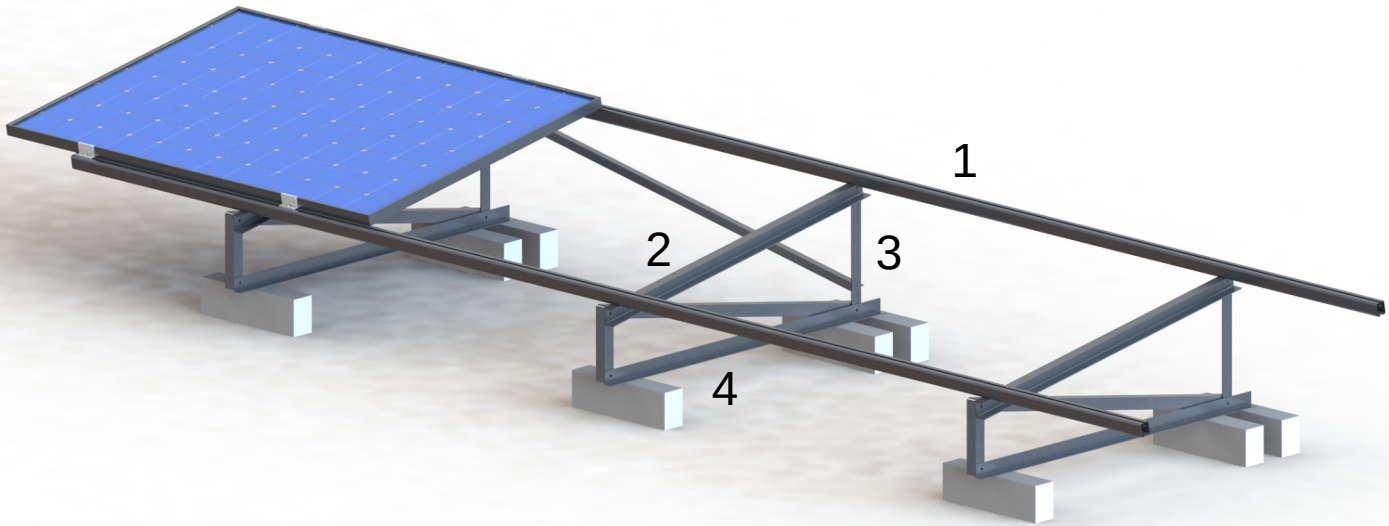
<i>Application</i>	<b>Flat roof installations</b>
<i>Materials</i>	<b>Aluminum</b>
<i>Accessories</i>	<b>High Quality INOX or aluminum</b>
<i>Orientation</i>	<b>Landscape</b>
<i>Inclination</i>	<b>25° , 30° or according to the customer's request</b>
<i>Dimension's Limits</i>	<b>Unlimited extension of table length/ Usually up to 40m in length</b>
<i>PV Modules</i>	<b>Up to 2.5m in length/ Special Design for bifacial panels/ Ability for further PV equipment on the main structure</b>
<i>Foundation</i>	<b>On ballasts</b>
<i>Wind Load Limit</i>	<b>33 m/s (Terrain Category I)</b>
<i>Snow load Limit</i>	<b>1,7 kN/m<sup>2</sup> (Zone C)</b>



**METALOUMIN**  
ALUMINIUM SYSTEMS SINCE 1969

## MOUNTING SYSTEM WITH BALLASTS FOR FLAT ROOF APPLICATIONS

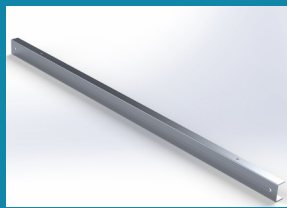
M-FR-531L



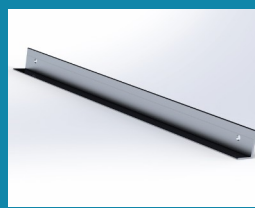
### COMPONENTS



1.PV RAIL



2.INCLINED



3.LEG



4.RAIL

