



**MOUNTING SYSTEM FOR TRAPEZOIDAL
POLYURETHANE SANDWICH ROOFS
INDUSTRIAL APPLICATIONS**

M-IR-800P-64



Portrait Layout

FEATURES

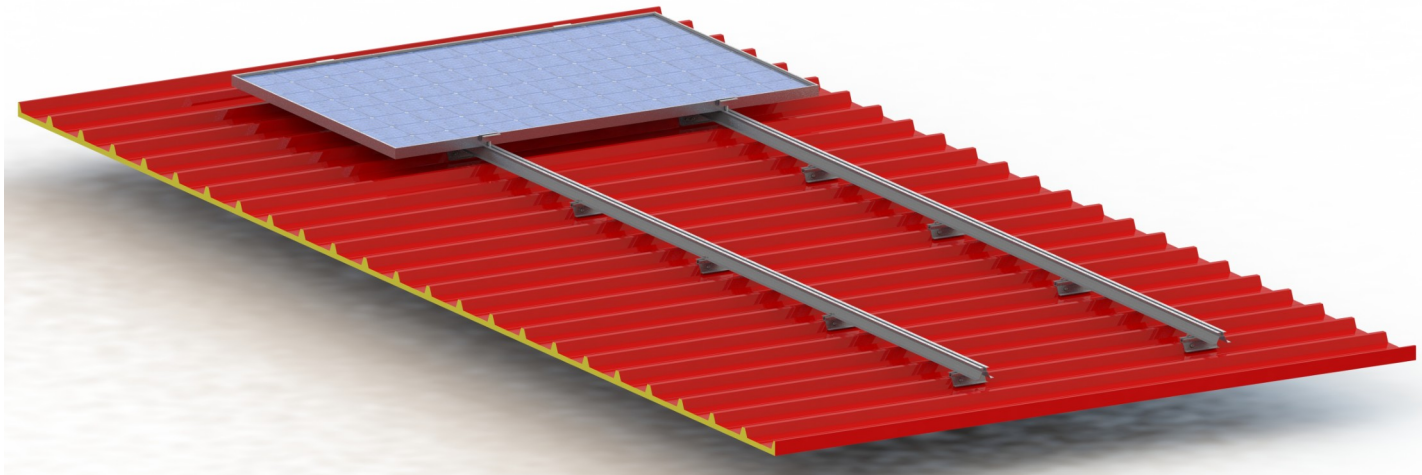
<i>Application</i>	Industrial Roof Installations
<i>Materials</i>	Aluminum
<i>Accessories</i>	High Quality INOX or Galvanized ones
<i>Orientation</i>	Portrait
<i>Inclination</i>	Parallel to the roof
<i>Anchoring</i>	Self-drilling screws on the roof panel
<i>Standard</i>	Eurocodes & National Annexes
<i>Mb_{max} for rail</i>	0.9 kNm
<i>Wind Load Limit</i>	33 m/s (Terrain Category I)
<i>Snow Load Limit</i>	1.7 kN/m² (Zone C)



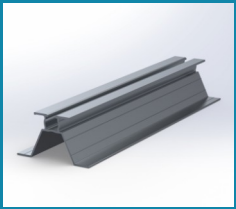
METALOUMIN
ALUMINIUM SYSTEMS SINCE 1969

**MOUNTING SYSTEM FOR TRAPEZOIDAL
POLYURETHANE SANDWICH ROOFS
INDUSTRIAL APPLICATIONS**

M-IR-800P-64



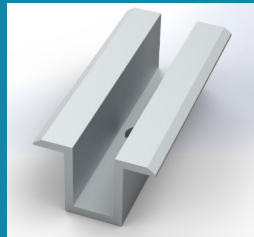
COMPONENTS



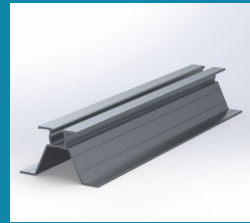
1. Pv Rail



2. End Clamp



3. Middle Clamp



4. SL64a Foot



**5. Self-Drilling
Screw**

