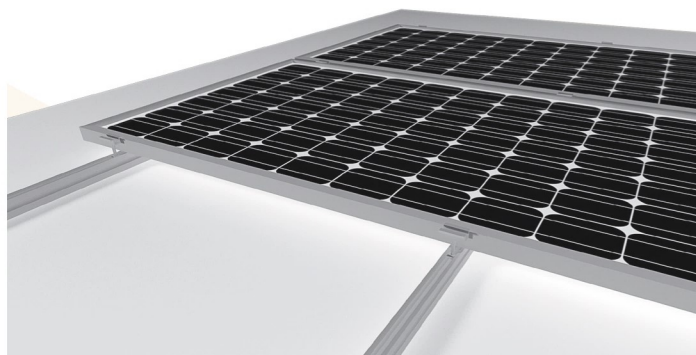


12
YEARS
WARRANTY

Basic Flat Systems are the simplest solution for roof-parallel projects. The system uses two slotted rails to support one row of PV modules. These PV modules are fastened to the rails with middle-clamps and end-clamps and they are usually placed in portrait configuration, though landscape configuration is also available. It is also available a broad range of anchoring systems (self-drilling screws, hooks, spikes, etc.) for all kind of rooftops, covers or surfaces.

● SYSTEM VIEWS

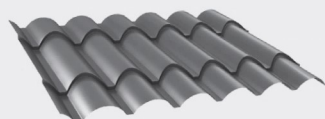


CONIC VIEW

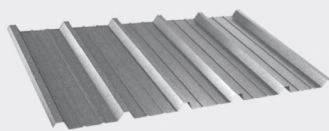
● SYSTEM FEATURES

- Aluminum slotted rails for PV module support.
- Stainless steel bolts and nuts.
- Anchors and ancillary accessories.
- Sealing elements (Neoprene or EPDM gasket, chemical dowel).

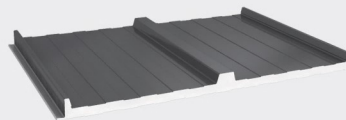
● SYSTEM APPLICABILITY



ROOF TILE



CORRUGATED METAL SHEET



SANDWICH PANEL

BASIC FLAT SYSTEM



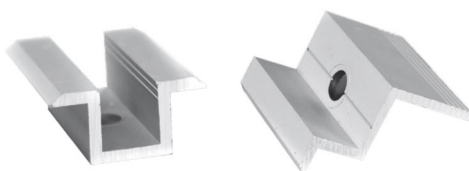
SLOTTED RAILS



INTERFACE RAILS



FASTENERS



BOLTS AND NUTS



SEALINGS



ANCHORS



APPLICATIONS

PV modules of all kinds and sizes, also for solar thermal collectors.
All kinds of buildings and rooftops.
Roof-parallel system

ADVANTAGES

Longevity
Lightness
Mechanical strength
Ease of installation
Quick installation
Water tightness
Simplicity
Polyvalent profiles

MATERIALS

Aluminum profiles
Stainless steel screws
EPDM sealing
Stainless steel anchoring

STANDARDS

CTE
EN

SUPPLY

Quick delivery
On site or warehouse supply available.
After-sales service
Technical assistance
Included custom technical drawings and bill of materials.

WARRANTY

12 Years

[*] CHECK AVAILABILITY