

FE54-18X(N) Transparent

High Efficiency ZERO LID and TOPCON cell with Half-cut Technology

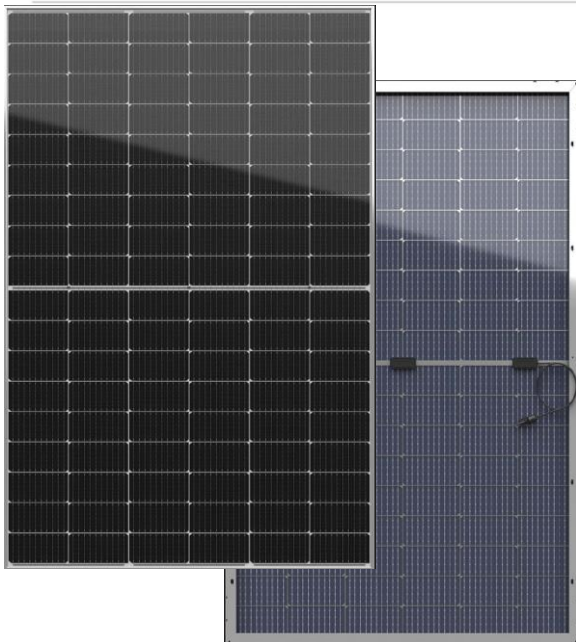
Jiangsu Xiehang Energy Technology Co.Ltd
www.xiehangenergy.com

Factory: HT FELLOW ENERJİ A.Ş.
Factory: CHEN GUNES ENERJISI SANAYI VE TICARET LIMITED SIRKETI
Factory: Jiangsu Xiehang Energy Technology Co.Ltd

NEW

182*91 Monocrystalline

415W / 420W / 425W / 430W / 435W



● **Module Efficiency:**

22.3%

● **No.of Cells:**

108 (6 x 18)

● **Weight:**

21.0kg

● **Dimensions:**

1724±2mmx1134±2mmx30mm



ZERO LID(Light Induced Degradation)
N-type solar cell has no LID naturally which can increase power generation



10-30% Additional Power Generation
10-30% additional power generation comparing with conventional P-type module

12Ys

Product Warranty



Lower LCOE
Higher bifaciality80%±5%, higher power output and lower BOS cost
Better Weak Illumination Response
Higher power output even under low-light environment

30Ys

Warranty on power output



Better Temperature Coefficient
Higher power generation under normal working conditions

EL

Microcrack resistant
highperformance transparent backsheet structure
enhance reliability,triple EL tested of high quality control.



Enhanced Mechanical Load
Certified to withstand:
wind load(2400 Pascal)
and snow load (5400 pascal).

5W

Positive tolerance
0/+5W guaranteed

PID

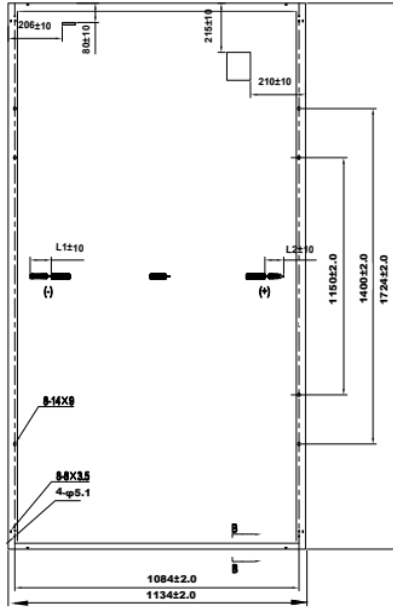
PID Resistant

Comprehensive and First-rate certification System

IEC61215:2016.IEC61730:2016 Latest Standard ISO14001 and ISO45001,meeting the highest international standards Strict quality control



Engineering Drawing



Electrical Characteristics (STC)

Module Type	FE54-18X(N)				
Maximum Power(Pmax)	415W	420W	425W	430W	435W
Open Circuit Voltage(Voc)	38.0V	38.1V	38.2V	38.3V	38.4V
Short Circuit Current(Isc)	13.99A	14.07A	14.15A	14.23A	14.31A
Maximum Power Voltage(Vmp)	31.3V	31.5V	31.7V	31.9V	32.0V
Maximum Power Current(Imp)	13.26A	13.34A	13.42A	13.50A	13.60A
Module Efficiency(%)	21.23%	21.48%	21.74%	21.99%	22.3%
Power Tolerance	0 ~ +5W				
Maximum System Voltage	1500V DC(IEC)				
Maximum Series Fuse Rating	25A/30A				
Operating Temperature	-40°C TO +85°C				

*STC: AM 1.5, Irradiance 1000W/m², module temperature 25°C

Electrical Characteristics(NMOT)

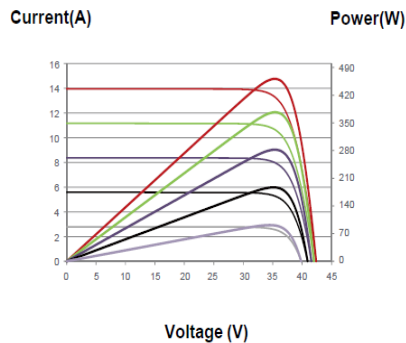
Module Type	FE54-18X(N)(Bifaciality 80±5%)				
Maximum Power(Pmax)	315W	319W	323W	327W	331W
Open Circuit Voltage(Voc)	36.5V	36.6V	36.7V	36.8V	36.9V
Short Circuit Current(Isc)	11.28A	11.34A	11.40A	11.47A	11.53A
Maximum Power Voltage(Vmp)	30.0V	30.2V	30.4V	30.7V	30.9V
Maximum Power Current(Imp)	10.50A	10.56A	10.62A	10.65A	10.71A

NMOT 45°C±2°C

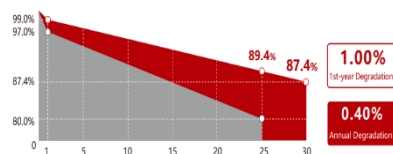
*NMOT: Irradiance 800W/m², ambient temperature 20°C, wind speed 1m/s

Temperature Coefficient of Pmax	γ(Pm)	-0.29%/°C
Temperature Coefficient of Voc	β(Voc)	-0.23%/°C
Temperature Coefficient of Isc	α(Isc)	+0.041%/°C

IV Curves



Warranty



12-year product warranty
30-year warranty on power output
*Specific information is referred to the product quality guarantee

Solar Cells	Monocrystalline 182 x 91mm
No. of Cells	108 (6 × 18)
Dimensions	1724±2mm × 1134±2mm × 35mm
Weight	21.0kg
Front Glass	High transmission tempered glass 3.2mm
Frame	Anodized aluminum alloy
Junction Box	IP68
Cable	4mm ² (IEC) length: (+)400mm, (-)200mm/length can be customized
Connectors	MC4/MC4 Compatible
Packaging Configuration	36 pcs/box: 936pcs 40'HQ Container

*The module recycling should be carried out by the professional institutions at the end of module life cycle

*Copyright@2023 V0 Plus Specifications are subject to change without further notification