

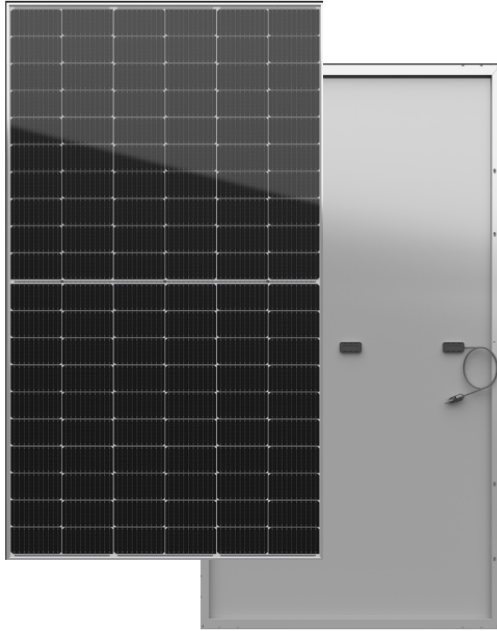
FE60-18X(N) W

High Efficiency ZEROLID and TOPCON cell with Half-cut Technology

NEW

Big Size: Cell 182*91 Monocrystalline

465W / 470W / 475W/ 480W/ 485W



- **Module Efficiency:** 22.4%
- **No.of Cells:**
120(6 x 20)
- **Weight:**
23.0kg
- **Dimensions:**
1909±2mmx1134±2mmx30mm



Jiangsu Xiehang Energy Technology Co.Ltd
www.xiehangenergy.com

Factory: FELLOW ENERJI A.Ş.
Factory: CHEN GUNES ENERJISI SANAYI VE
TICARET LIMITED SIRKETI
Factory:Jiangsu Xiehang Energy Technology Co.Ltd



ZERO LID(Light Induced Degradation)

N-type solar cell has no LID naturally which can increase power generation



10-30% Additional Power Generation

10-30% additional power generation comparing with conventional P-type module

12Ys

Products Warranty



Lower LCOE
Higher power output and lower BOS cost
Better Weak Illumination Response
Higher power output even under

30Ys

Warranty on power output

Low-light environment

EL

Microcrack resistant highperformance transparent backsheet structure enhance reliability, triple EL tested of high quality control.



Better Temperature Coefficient
Higher power generation under normal working conditions

5W

Positive tolerance 0/+5W guaranteed



Entire module certified to with stand extreme wind (2400 Pa) and snow loads (5400 Pa)

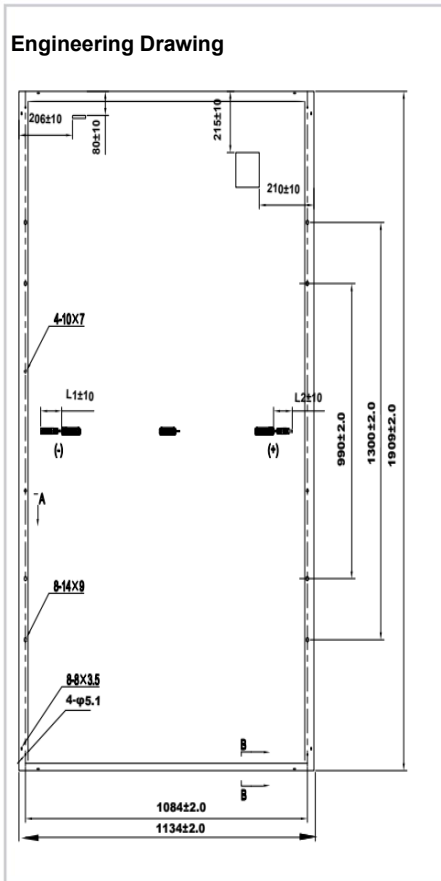
PID

PID Resistant

Comprehensive and first-rate certification system

IEC61215: 2016, IEC61730: 2016 Latest Standard ISO14001 and ISO45001, meeting the highest international standards Strict quality control





Electrical Characteristics (STC)

Module Type	FE60-18X (N)				
Maximum Power(Pmax)	465W	470W	475W	480W	485W
Open- Circuit Voltage(Voc)	42.3V	42.4V	42.5V	42.6V	42.7V
Short- Circuit Current(Isc)	14.07A	14.15A	14.23A	14.31A	14.39A
Maximum Power Voltage(Vmp)	35.0V	35.2V	35.4V	35.6V	35.8V
Maximum Power Current(Imp)	13.30A	13.37A	13.43A	13.50A	13.56A
Module Efficiency(%)	21.5%	21.7%	22.0%	22.2%	22.4%
Power Tolerance	0 ~ +5W				
Maximum System Voltage	1500V DC(IEC)				
Maximum Series Fuse Rating	25A/30A				
Operating Temperature	-40°C TO +85°C				

*STC: AM 1.5, Irradiance 1000W/m², module temperature 25°C

Electrical Characteristics(NMOT)

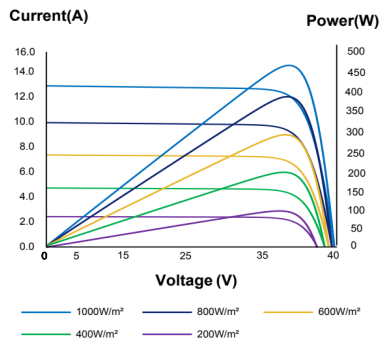
Module Type	FE60-18X(N)				
Maximum Power(Pmax)	350W	353W	357W	361W	365W
Open Circuit Voltage(Voc)	40.1V	40.25V	40.41V	40.57V	40.73V
Short Circuit Current(Isc)	11.36A	11.42A	11.49A	11.55A	11.61A
Maximum Power Voltage(Vmp)	32.77V	32.94V	33.10V	33.27V	33.43V
Maximum Circuit Current(Imp)	10.67A	10.73A	10.79A	10.85A	10.92

NMOT 45°C±2°C

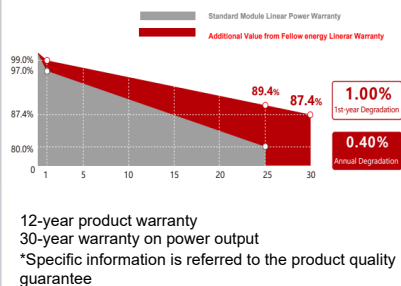
*NMOT: Irradiance 800W/m², ambient temperature 20°C, wind speed 1m/s

Temperature Coefficient of Pmax	Y(Pm)	- 0.29%/°C
Temperature Coefficient of Voc	β(Voc)	- 0.23%/°C
Temperature Coefficient of Isc	α(Isc)	+0.041%/°C

IV Curves



Warranty



12-year product warranty
30-year warranty on power output
*Specific information is referred to the product quality guarantee

Solar Cells	Monocrystalline 182 x 91mm
No. of Cells	120 (6×120)
Dimensions	1909±2mm×1134±2mm×30mm
Weight	23.0kg
Front Glass	High transmission tempered glass ; thickness; 3.2mm
Frame	Anodized aluminum alloy
Junction Box	IP68
Cable	4mm ² (IEC);(+)-400mm(-)-200mm/length can be customized
Connectors	MC4 / MC4 compatible
Packaging Configuration	36pcs/box: 864pcs 40'HQ Container