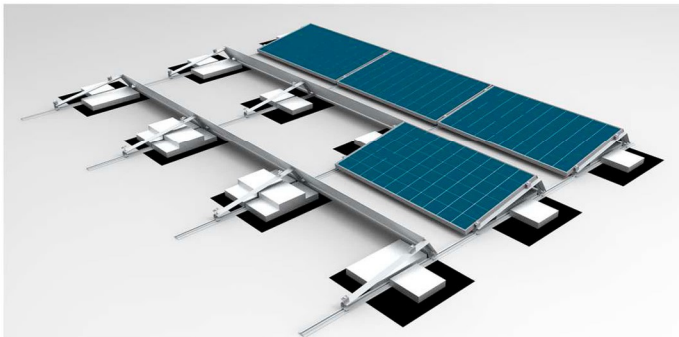


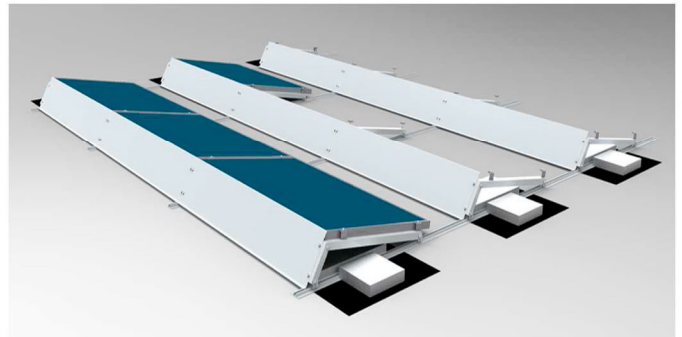
SELF-SUPPORTED SYSTEM

The Self-Supported System is the best choice for flat roofs or roofs with slight slope where it is possible to ballast with concrete blocks, and where the maximum admissible load is limited. Highly recommended for lightweight rooftops.

● SYSTEM VIEWS



CONIC VIEW



REAR VIEW

● SYTEM FEATURES

Aluminum base slotted rail for correct angle bracket installation and concrete ballast fastening.

Bolt-on ready aluminum angle brackets with 10° tilt. Other tilt angles available.

Aluminum end-clamps and middle-clamps.

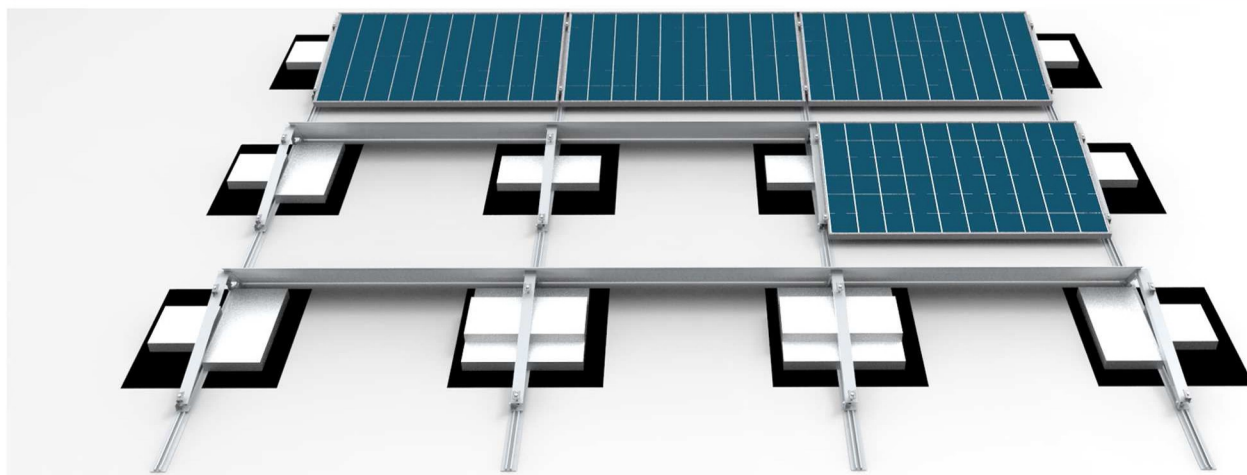
Metal sheet as wind deflector.

Deflector fastening with self-drilling screws.

Ballast fastening plate in aluminum.

Stainless steel bolts and nuts.

SELF-SUPPORTED SYTEM



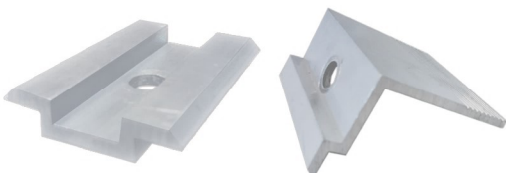
BASE RAIL



ANGLE BRACKETS



FASTENERS



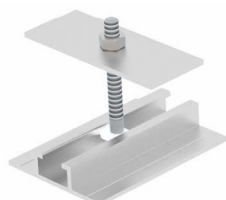
BOLTS AND NUTS



REAR WIND DEFLECTOR



BALLAST FASTENERS



APPLICATIONS

PV modules of all kinds and sizes, also for dual glass modules. Flat roofs and lightweight roofs. 10° tilt. Other tilt angles available.

ADVANTAGES

Longevity
Lightness
Mechanical strength
Ease of installation
Quick installation
Water tightness
Simplicity

MATERIALS

Aluminum profiles
Stainless steel screws
Metal sheet wind deflectors

SUPPLY

Quick delivery
On site or warehouse supply available.
After-sales service
Technical assistance
Included custom technical drawings and bill of materials.

WARRANTY

12 Years