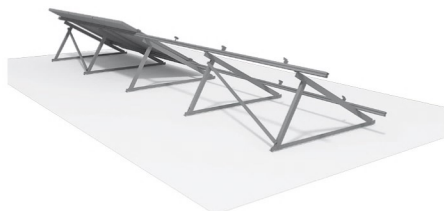


12
YEARS
WARRANTY

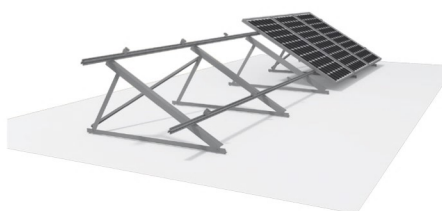
BASIC TILT SYSTEM

Basic Tilt Systems are the simplest solution for tilted projects. The system uses two slotted rails to support one row of PV modules. These PV modules are fastened to the rails with middle-clamps and end-clamps and can be placed both in portrait and landscape configuration. At the same time, the rails are bolted on aluminum angle brackets with the tilt requested by the client. It is also available a broad range of anchoring systems (self-drilling screws, hooks, spikes, etc.) for all kind of rooftops, covers or surfaces.

● SYSTEM VIEWS



REAR VIEW



CONIC VIEW

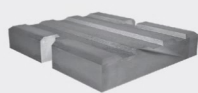


DETAIL VIEW

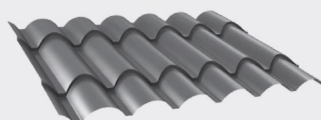
● SYSTEM FEATURES

- Aluminum slotted rails for PV module support.
- Bolt-on ready aluminum angle brackets for any tilt.
- Cross bracing.
- Stainless steel bolts and nuts.
- Anchors and ancillary accessories.
- Sealing elements (Neoprene or EPDM gasket, chemical dowel).

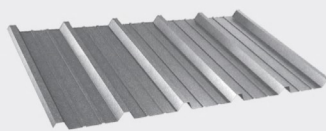
● SYSTEM APPLICABILITY



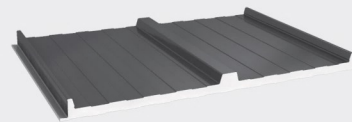
CONCRETE BALLAST



ROOF TILE



CORRUGATED METAL SHEET



SANDWICH PANEL

BASIC TILT SYSTEM

ANGLE BRACKETS



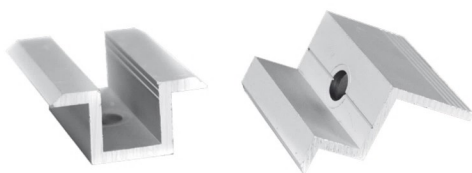
SLOTTED RAILS



INTERFACE RAILS



CROSS BRACING



FASTENERS

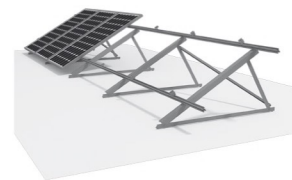


BOLTS AND NUTS

SEALINGS



ANCHORS



APPLICATIONS

PV modules of all kinds and sizes, also for solar thermal collectors.

All kinds of buildings and rooftops.

Available from 0° to 60° tilt.

ADVANTAGES

Longevity

Lightness

Mechanical strength

Ease of installation

Quick installation

Water tightness

Simplicity

Polyvalent profiles

MATERIALS

Aluminum profiles

Stainless steel screws

EPDM sealing

Stainless steel anchoring

STANDARDS

CTE

EN

SUPPLY

Quick delivery

On site or warehouse supply available.

After-sales service

Technical assistance

Included custom technical drawings and bill of materials.

WARRANTY

12 Years

[*] CHECK AVAILABILITY