



**METALOUMIN**  
ALUMINIUM SYSTEMS SINCE 1969

## East-West Mounting System for Flat Roofs

M-FR-350P

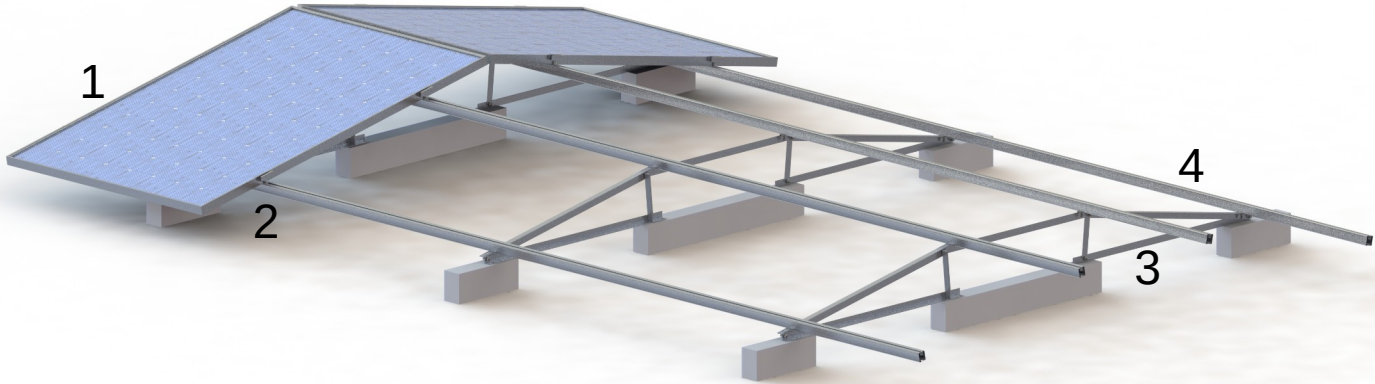


East-West Mounting System  
for Flat Roofs

| FEATURES                  |  |
|---------------------------|--|
| <i>Application</i>        | <b>Flat roof installations</b>   |
| <i>Materials</i>          | <b>Aluminum</b>  |
| <i>Accessories</i>        | <b>High Quality INOX or aluminum</b>   |
| <i>Orientation</i>        | <b>Portrait</b>  |
| <i>Dimension's Limits</i> | <b>Unlimited extension of table length/ Usually up to 40m in length</b>  |
| <i>PV Modules</i>         | <b>Up to 2.5m in length/ Special Design for bifacial panels/Ability for further PV equipment on the main structure</b> |
| <i>Foundation</i>         | <b>On the roof or ballasted</b>  |
| <i>Wind Load Limit</i>    | <b>33 m/s (Terrain Category I)</b>   |
| <i>Snow load Limit</i>    | <b>1,7 kN/m<sup>2</sup> (Zone C)</b>   |

## East-West Mounting System for Flat Roofs

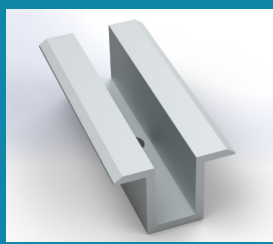
M-FR-350P



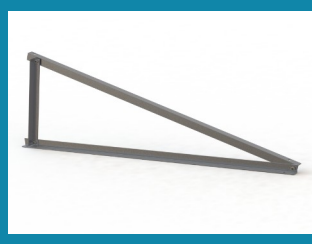
### COMPONENTS



**1. End Clamp**



**2. Middle Clamp**



**3. Triangular Mounting System**



**4. PV RAIL**

