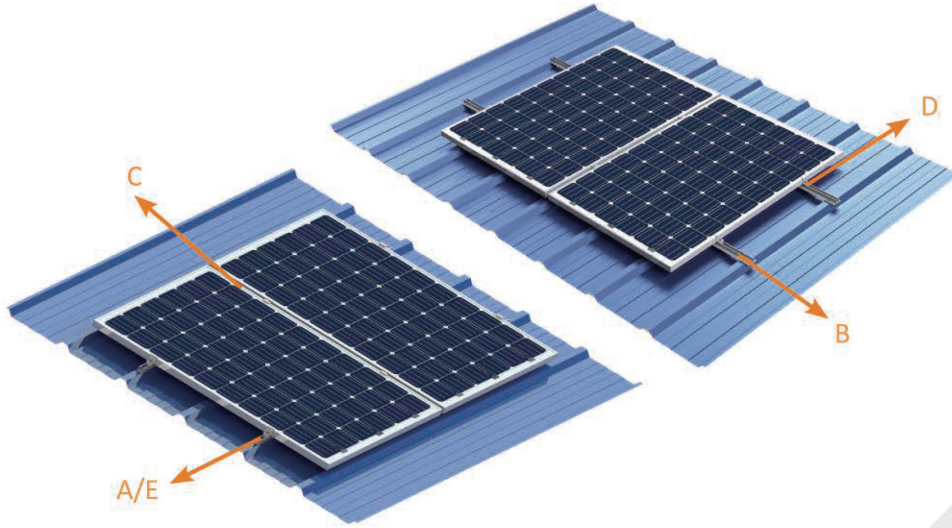


【 Railless Roof Mounting System 】



Design Conditions

Application:	Metal roof
Building height:	20m
Wind speed:	Up to 64m/s (Australia wind region C)
Snow load:	100cm
PV module:	Framed, unframed
Layout way:	Landscape/portrait
Elevation angle:	flushed with the roof
Material:	6005 T5+SS304
Standard:	AS/NZS1170.2:2011, JIS C 8955:2017
Warranty:	10 years
Surface treatment:	Anodizing



A:Mini Rail(panels in landscape)



B:Mini Rail (panels in portrait)



C:Mid Clamp



E:Railless Kliplock Clamp



D:End Clamp