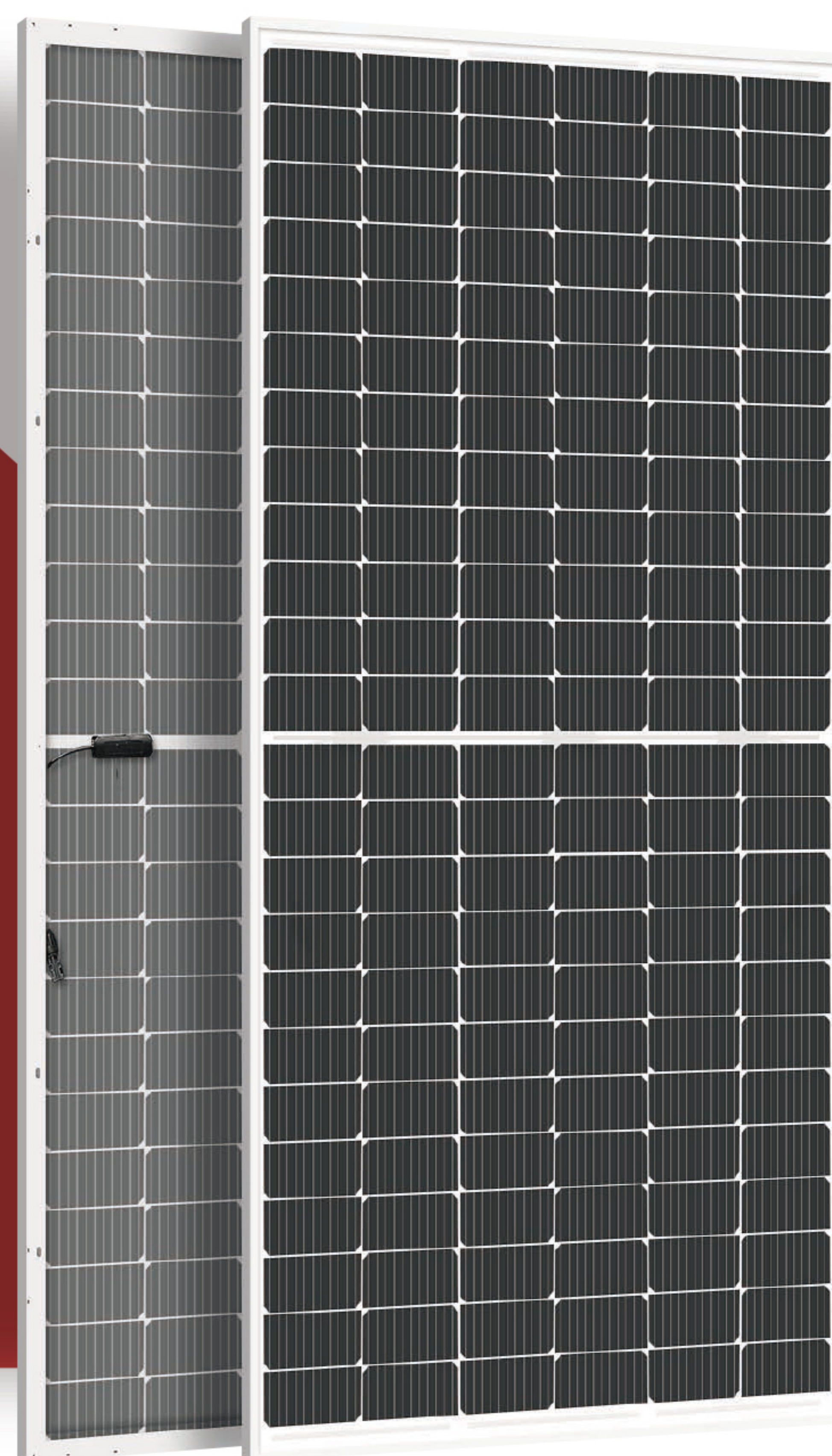
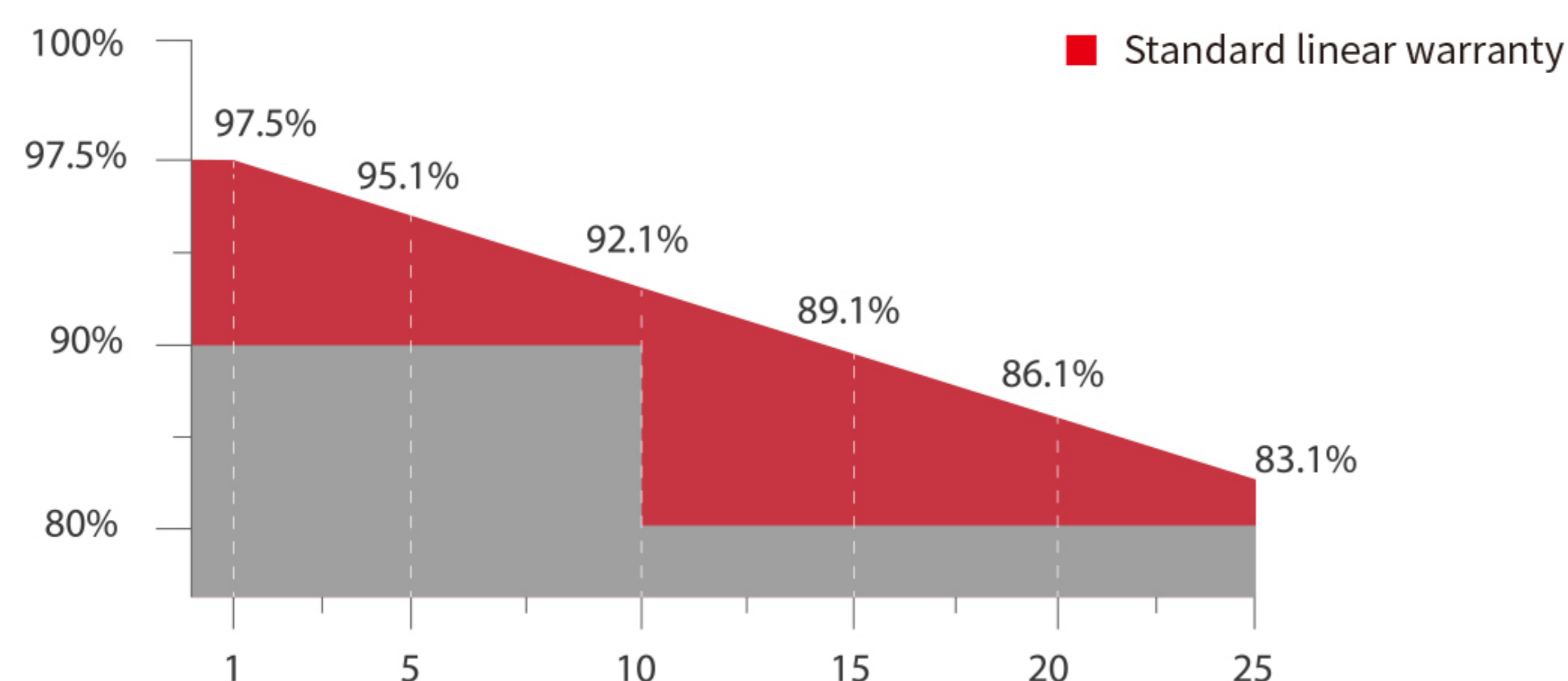


530-550W Mono

Suitable for ground power plants and large projects.
182mm silicon wafers with multi-busbar and half-cut cell technologies. Resistant to harsh environments such as salt, ammonia, sand, high temperature and high humidity areas
High module quality ensures long-term reliability.



Linear performance Warranty



Linear performance warranty



Product warranty

Comprehensive Certificates

CERTIFICATION

- IEC61215/IEC61730
- ISO9001:Quality Management System
- ISO14001:Environmental Management System
- ISO45001:Occupational Health and Safety Management System



Electrical Specification (STC*)

Maximum Power	P _{max} (W)	530	535	540	545	550
Maximum Power Voltage	V _{mp} (V)	40.74	40.88	41.01	41.15	41.28
Maximum Power Current	I _{mp} (A)	13.01	13.09	13.17	13.24	13.32
Open Circuit Voltage	V _{oc} (V)	49.26	49.40	49.53	49.67	49.80
Short Circuit Current	I _{sc} (A)	13.69	13.77	13.85	13.93	14.01
Module Efficiency	(%)	20.6	20.8	21.0	21.2	21.4
Power Output Tolerance	(W)	0~+5				

* Irradiance 1000W/m², Module Temperature 25°C, Air Mass 1.5

Electrical Specification (NOCT*)

Maximum Power	P _{max} (W)	394	398	402	406	410
Maximum Power Voltage	V _{mp} (V)	37.92	38.05	38.19	38.32	38.46
Maximum Power Current	I _{mp} (A)	10.40	10.46	10.52	10.58	10.64
Open Circuit Voltage	V _{oc} (V)	46.50	46.63	46.75	46.88	47.00
Short Circuit Current	I _{sc} (A)	11.06	11.12	11.19	11.25	11.32

* Irradiance 800W/m², Ambient Temperature 20°C, Wind Speed 1m/s

Mechanical Data

Number of Cells	144 Cells (6×24)
Dimensions of Module L*W*H (mm)	2279×1134×35mm (89.72×44.64×1.38 inches)
Weight (kg)	29.4 kg
Glass	High transparency solar glass 3.2mm (0.13 inches)
Backsheet	White
Frame	Silver, anodized aluminium alloy
J-Box	IP68 Rated
Cable	4.0mm ² (0.006 inches ²), 300mm (11.8 inches)
Number of diodes	3
Wind/ Snow Load	2400Pa/ 5400Pa*
Connector	MC Compatible

* For more details please check the installation manual

Temperature Ratings

Nominal Operating Cell Temperature (NOCT)	44±2°C
Temperature Coefficient of I _{sc}	+0.048%/°C
Temperature Coefficient of V _{oc}	-0.270%/°C
Temperature Coefficient of P _{MAX}	-0.350%/°C

Maximum Ratings

Operational Temperature	-40~+85°C
Maximum System Voltage	1500V DC -(H)
Max Series Fuse Rating	25A

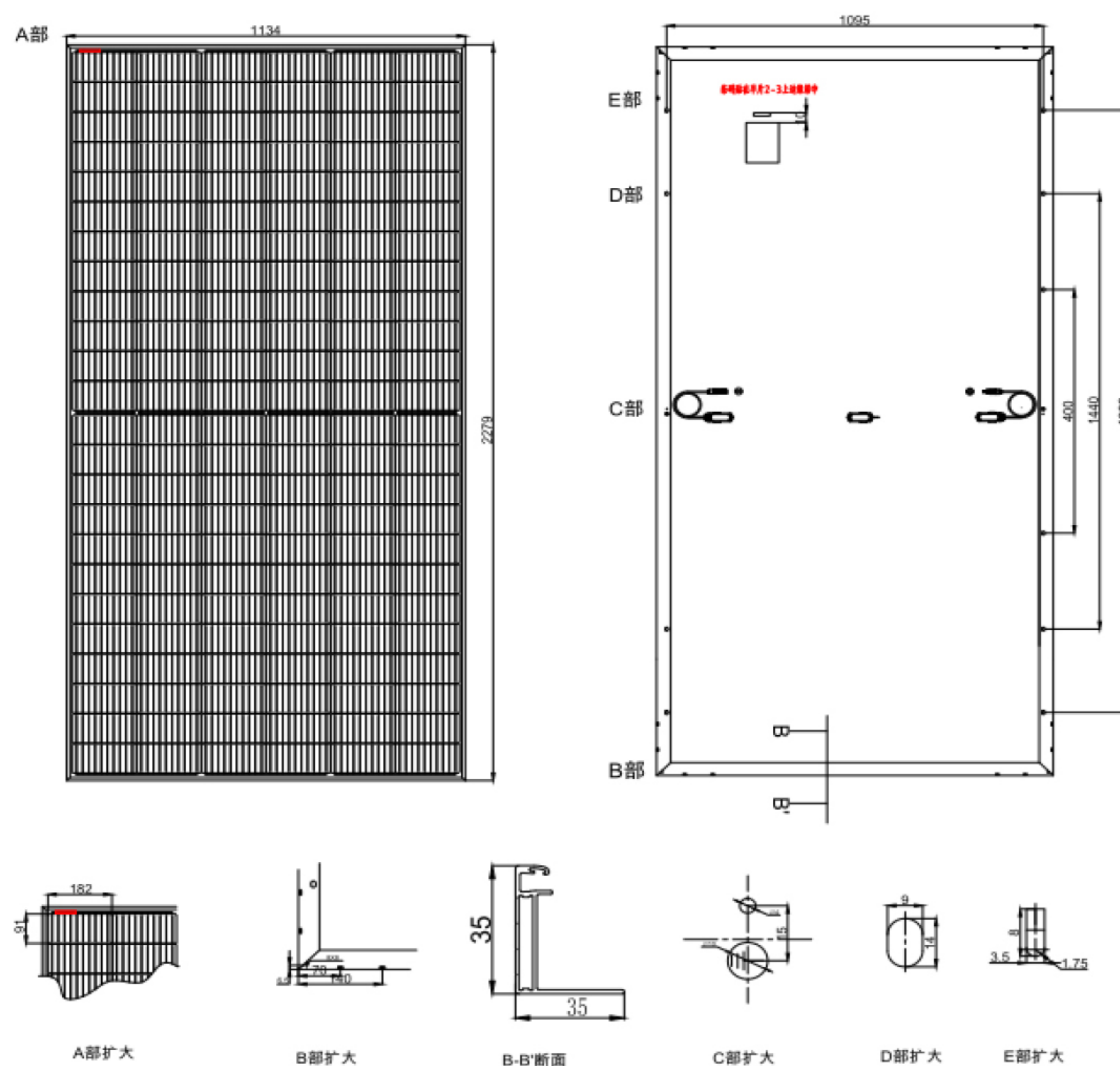
Packaging Configuration

Module per box	31 pieces
Module per 40' container	620 pieces

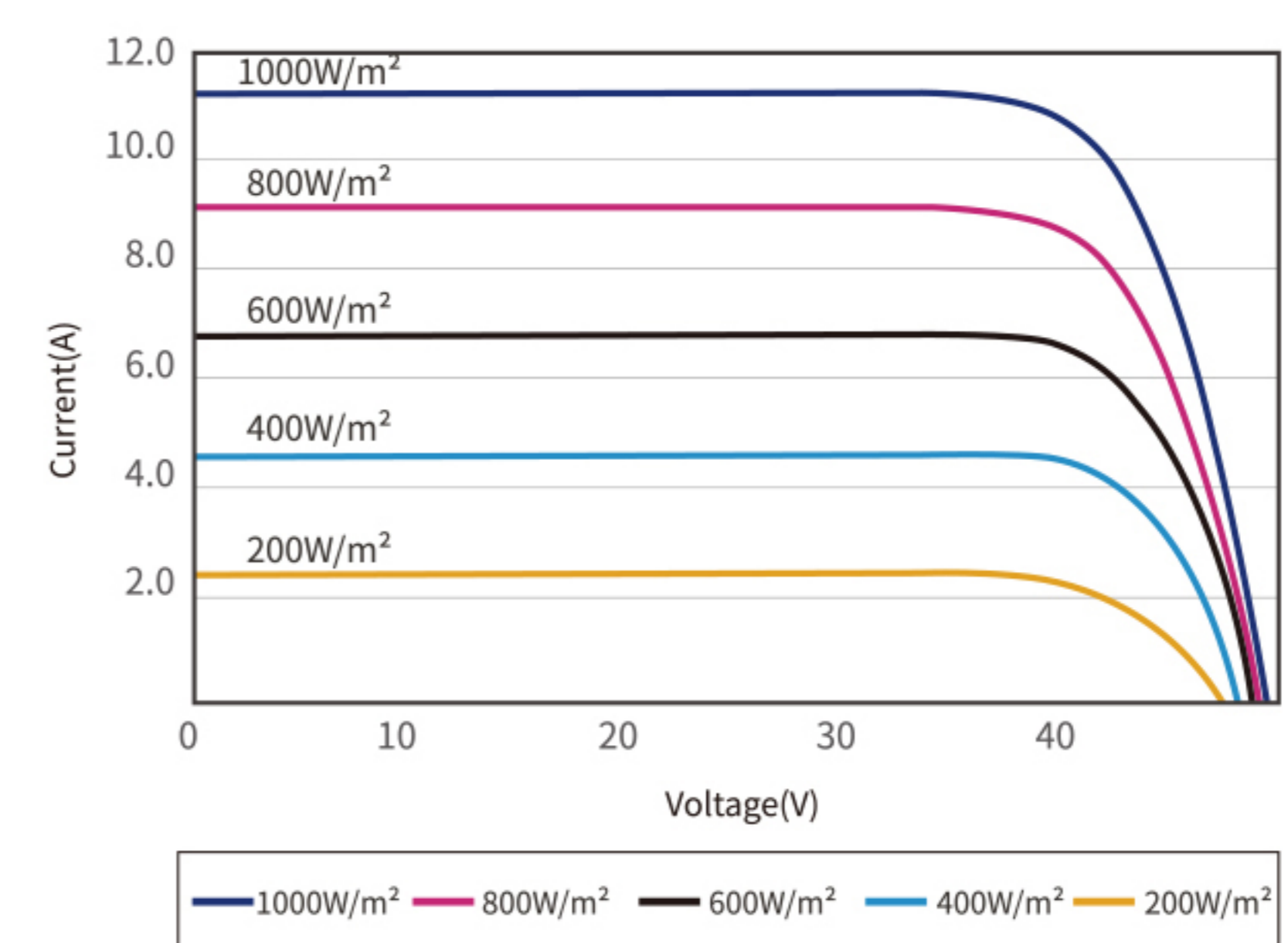
Optional

Connector	<input checked="" type="checkbox"/> MC Original
-----------	---

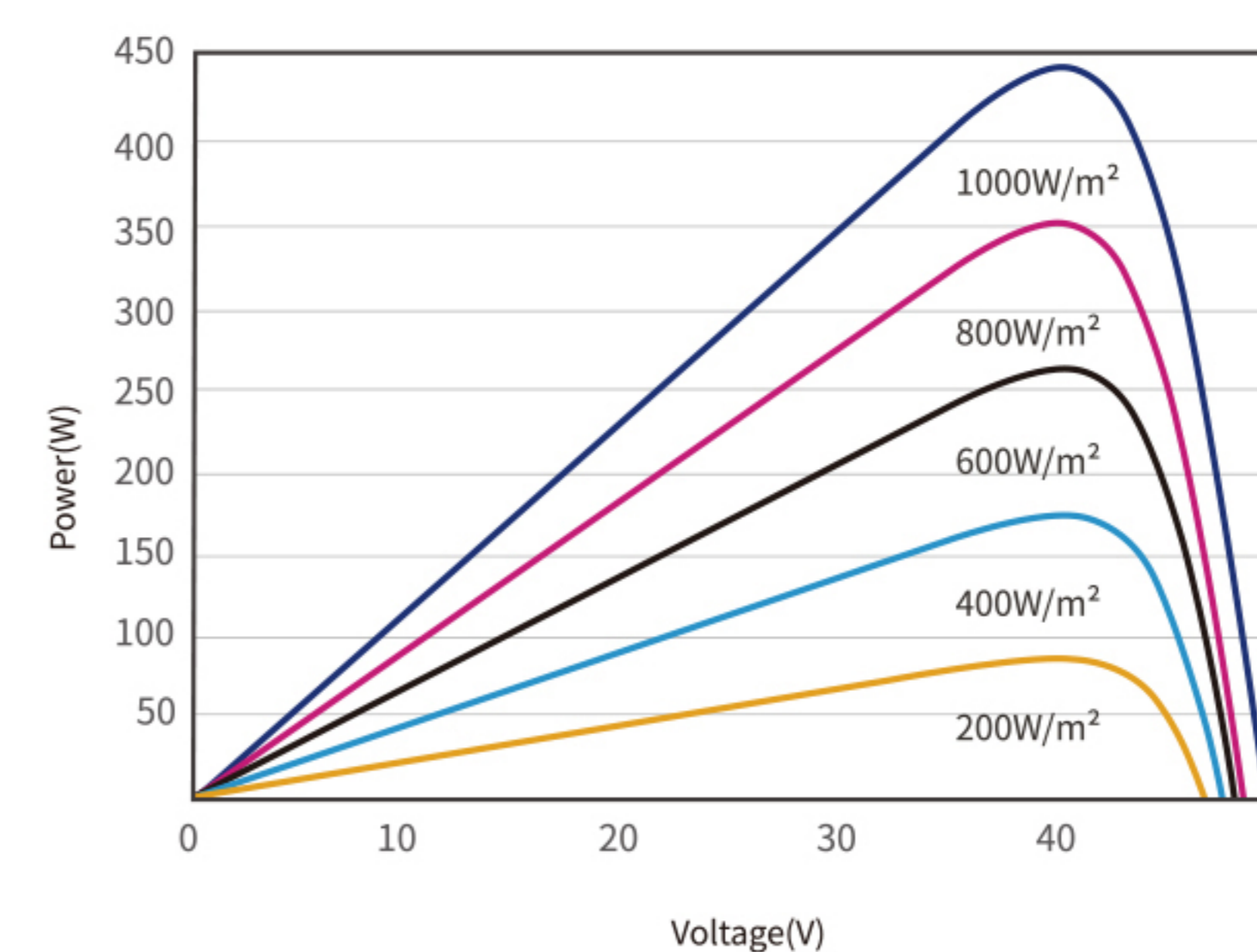
ENGINEERING DRAWINGS



IV CURVES



I-V CURVES OF PV MODULE(540W)



P-V CURVES OF PV MODULE(540W)