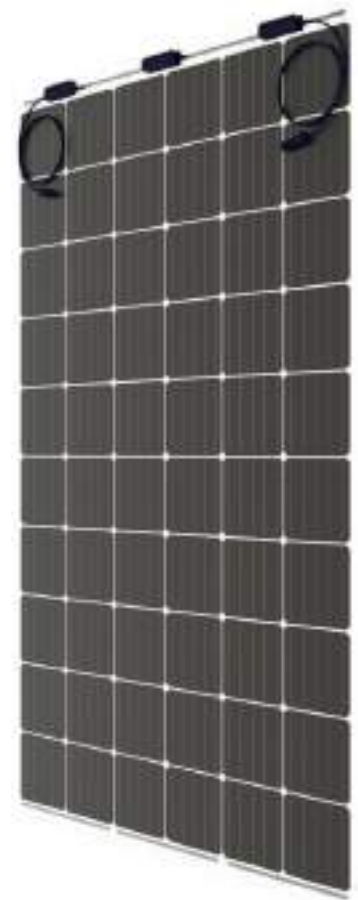


Topsun's Crystalline Photovoltaic Modules are manufactured under Integrated Management System (ISO 9K: ISO 14K: BS 18K) for quality and safety environment. Offers high module efficiencies with consistent performance, quality workmanship and antimony free glass material. High power modules precisely manufactured to achieve better module conversion efficiency in the industry. Environmental friendly product confirming to RoHS standards.

Features :

- *Mono PERC Crystalline*
- *Encouraging Power Generation by saving Natural Day Light*
- *Itself becomes a building block*
- *Linear degradation as per Industry standard*
- *Energy Efficient- reduction of electricity usage*
- *Blocking direct sunlight & isolating heat*
- *Reduce Noise levels*
- *Aesthetically appealing inside face - different colours*
- *Customized Cell spacing for Transparency*
- *Human Safety, Made from 100 % full Tempered Glass*



Certifications :

- *ISO 9001; ISO 14001; OHSAS 18001 Certified*
- *ISO 50001 Certified*
- *RoHS compliance*
- *ZED Certified*

Applications :

- *Building Walls*
- *Facades, Canopies*
- *Special rooms required to maintain Temperature*
- *Low Temperature & Low Noise Amenities*



ISO 9001; ISO 14001; OHSAS 18001

Typical Electrical Characteristics at STC & Dimensional Details

IV parameters are tested at STC (Irradiance of 1000W/m², AM 1.5G and Temperature 25°C)

Model/Type	(Pmax)	(Vmp)	(Imp)	(Voc)	(Isc)	Eff (%)	No. of Cells	Module Size	Transparency(%)
48MP220	220	25.48	8.63	31.12	9.24	14.19	48	1550 X 1000 X 26 mm	21~25
48MP230	230	25.57	9.00	31.27	9.49	14.83	48	1550 X 1000 X 26 mm	21~25
48MP240	230	25.48	8.63	31.12	9.24	14.19	48	1550 X 1000 X 26 mm	21~25
54MP250	250	28.70	8.71	35.25	9.32	16.12	54	1550 X 1000 X 26 mm	11~15
54MP260	260	28.90	9.00	35.35	9.55	16.77	54	1550 X 1000 X 26 mm	11~15
54MP270	270	29.16	9.26	35.56	9.75	17.41	54	1550 X 1000 X 26 mm	11~15
18MP280	280	31.88	8.80	38.83	9.26	16.47	60	1700 X 1000 X 26 mm	11~15
18MP290	290	32.21	9.05	39.17	9.60	17.05	60	1700 X 1000 X 26 mm	11~15
18MP300	300	32.71	9.18	39.67	9.75	17.64	60	1700 X 1000 X 26 mm	11~15
24MP340	340	38.30	8.90	46.75	9.35	17.00	72	2000 X 1000 X 26 mm	05~10
24MP350	350	38.85	9.13	48.00	9.60	17.50	72	2000 X 1000 X 26 mm	05~10
24MP360	360	38.92	9.25	48.08	9.90	18.00	72	2000 X 1000 X 26 mm	05~10

Electrical Parameters Tolerance: ± 3%

Light Transparency should be change depend on no. of cells & type of using back side glass

Compliance of Simulator readings with an accuracy of class AAA (±2%)

System Design

Series Fuse Rating (Recommended): 15 A

Maximum System Voltage: 1000 VDC

Module Weight:

- 1550 x 1000 x 7 mm : 51.4 kg (113.31Lbs)
- 1700 x 1000 x 7 mm : 57.0 kg (125.66Lbs)
- 2000 x 1000 x 7 mm : 67.0 kg (147.70Lbs)

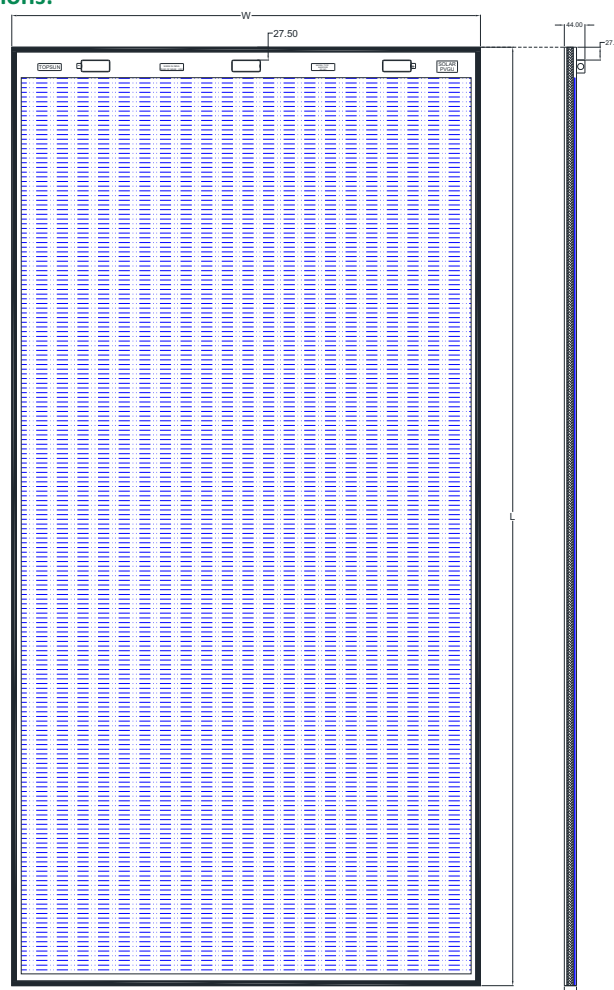
Temperature Co-efficients

NOCT	43±2	°C
Pmp	-0.39	%/°C
Isc	0.05	%/°C
Voc	-0.29	%/°C
Operating Temperature	-40 to +85	°C

Packing Configuration

- 1550 x 1000 x 7 mm : 7 modules/Box
- 1700 x 1000 x 7 mm : 7 modules/Box
- 2000 x 1000 x 7 mm : 6 modules/Box

Dimensions:



Tolerance: ± 2mm
All Dimensions are in mm



Refer Installation, Operation & Maintenance manual before use and operation of the product

NOTE: Data within this document may change without any prior notice due to continual improvements. you are advised to get latest information before making any final decision on listed products.

Topsun Energy Ltd.

B-101, GIDC, Electronics Zone, Sector-25, Gandhinagar- 382 028, Gujarat, India. Phone/Fax: +91 79 23288804, 23288805.

Email: marketing@topsunenergy.com, Website: www.topsunenergy.com.