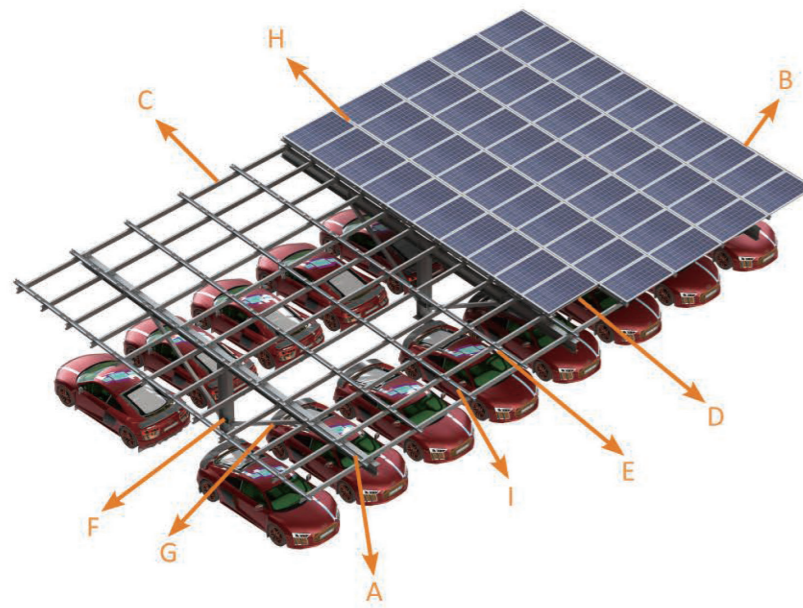


【 Steel Carport Mounting System 】



Design Conditions	
Application:	Flat ground
Wind speed:	Up to 64m/s (Australia wind region C)
Snow load:	150cm
PV module:	Framed, unframed
Layout way:	Landscape
Elevation angle:	≤30°(Recommended)
Material:	Q235B+Q355B
Foundation:	Concrete block
Standard:	AS/NZS1170.2:2011, JIS C 8955:2017
Warranty:	10 years
Surface treatment:	Anodized+Hot Dip Galvanized 65μm
Options:	Waterproof and Non-waterproof

