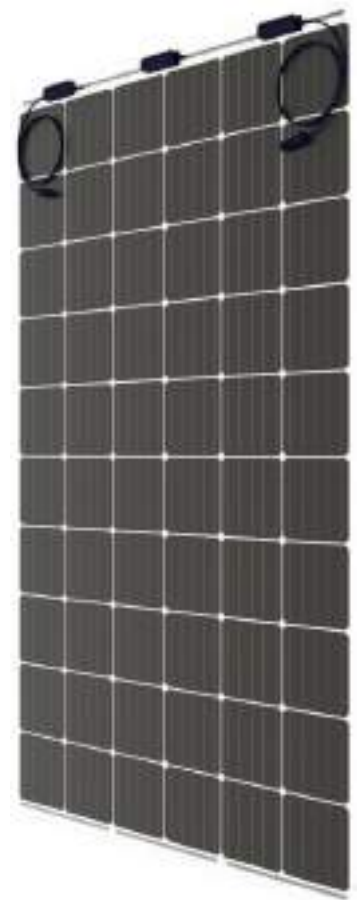


Topsun's Crystalline Photovoltaic Modules are manufactured under Integrated Management System (ISO 9K: ISO 14K: BS 18K) for quality and safety environment. Offers high module efficiencies with consistent performance, quality workmanship and antimony free glass material. High power modules precisely manufactured to achieve better module conversion efficiency in the industry. Environmental friendly product confirming to RoHS standards.

Features :

- *Mono PERC Crystalline*
- *Replacement for conventional building roofs*
- *Linear degradation as per Industry standard*
- *Encouraging Power Generation by Natural Day Light*
- *Customized Cell spacing for Transparency*
- *Aesthetically appealing – as per Architectural purview*
- *Human Safety - Made from 100 % full Tempered Glass*
- *Highly Durable for Moisture Ingression*
- *Corrosion free*
- *Long Life & Highly Reliable*



Certifications :

- *ISO 9001; ISO 14001; OHSAS 18001 Certified*
- *ISO 50001 Certified*
- *RoHS compliance*
- *ZED Certified*

Applications :

- *Best suited for installations on water bodies*
- *Facades, Canopies*
- *Windows*
- *Skylight*



ISO 50001:2011



ISO 9001; ISO 14001; OHSAS 18001

Typical Electrical Characteristics at STC & Dimensional Details

IV parameters are tested at STC (Irradiance of 1000W/m², AM 1.5G and Temperature 25°C)

Model/Type	(Pmax)	(Vmp)	(Imp)	(Voc)	(Isc)	Eff (%)	No. of Cells	Module Size	Transparency(%)
48MP220	220	25.48	8.63	31.12	9.24	14.19	48	1550 X 1000 X 7 mm	21~25
48MP230	230	25.57	9.00	31.27	9.49	14.83	48	1550 X 1000 X 7 mm	21~25
48MP240	230	25.48	8.63	31.12	9.24	14.19	48	1550 X 1000 X 7 mm	21~25
54MP250	250	28.70	8.71	35.25	9.32	16.12	54	1550 X 1000 X 7 mm	11~15
54MP260	260	28.90	9.00	35.35	9.55	16.77	54	1550 X 1000 X 7 mm	11~15
54MP270	270	29.16	9.26	35.56	9.75	17.41	54	1550 X 1000 X 7 mm	11~15
18MP280	280	31.88	8.80	38.83	9.26	16.47	60	1700 X 1000 X 7 mm	11~15
18MP290	290	32.21	9.05	39.17	9.60	17.05	60	1700 X 1000 X 7 mm	11~15
18MP300	300	32.71	9.18	39.67	9.75	17.64	60	1700 X 1000 X 7 mm	11~15
24MP340	340	38.30	8.90	46.75	9.35	17.00	72	2000 X 1000 X 7 mm	05~10
24MP350	350	38.85	9.13	48.00	9.60	17.50	72	2000 X 1000 X 7 mm	05~10
24MP360	360	38.92	9.25	48.08	9.90	18.00	72	2000 X 1000 X 7 mm	05~10

Electrical Parameters Tolerance: ± 3%

Light Transparency should be change depend on no. of cells

Compliance of Simulator readings with an accuracy of class AAA (±2%)

System Design

Series Fuse Rating (Recommended): 15 A

Maximum System Voltage: 1000 VDC

Module Weight:

- 1550 x 1000 x 7 mm : 26.0 kg (57.32Lbs)
- 1700 x 1000 x 7 mm : 29.0 kg (63.93Lbs)
- 2000 x 1000 x 7 mm : 34.0 kg (74.96Lbs)

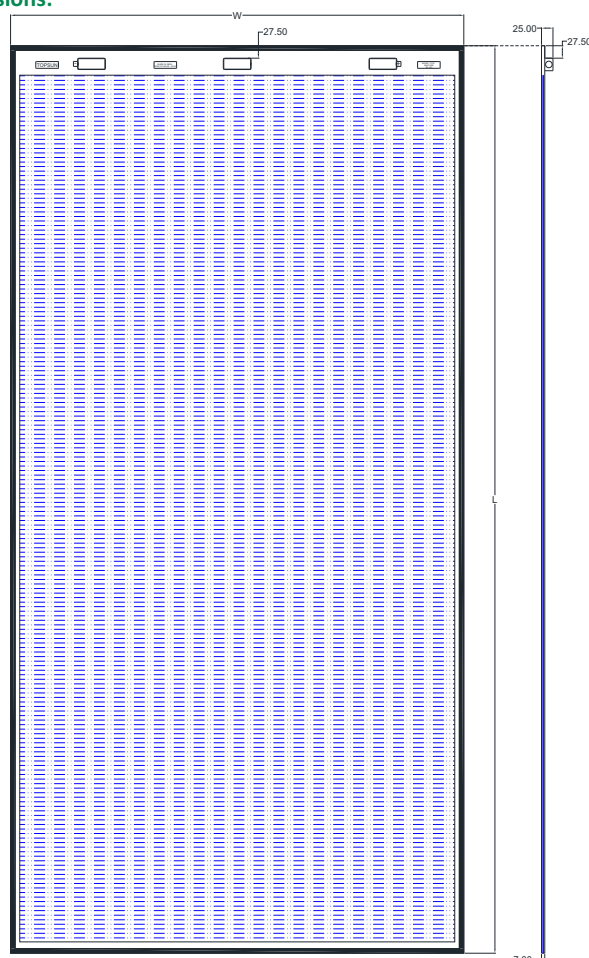
Temperature Co-efficients

NOCT	43±2	°C
Pmp	-0.39	%/°C
Isc	0.05	%/°C
Voc	-0.29	%/°C
Operating Temperature	-40 to +85	°C

Packing Configuration

- 1550 x 1000 x 7 mm : 18 modules/Box
- 1700 x 1000 x 7 mm : 17 modules/Box
- 2000 x 1000 x 7 mm : 15 modules/Box

Dimensions:



Tolerance: ± 2mm
All Dimensions are in mm



Refer Installation, Operation & Maintenance manual before use and operation of the product

NOTE: Data within this document may change without any prior notice due to continual improvements. you are advised to get latest information before making any final decision on listed products.

Topsun Energy Ltd.

B-101, GIDC, Electronics Zone, Sector-25, Gandhinagar- 382 028, Gujarat, India. Phone/Fax: +91 79 23288804, 23288805.

Email: marketing@topsunenergy.com, Website: www.topsunenergy.com.