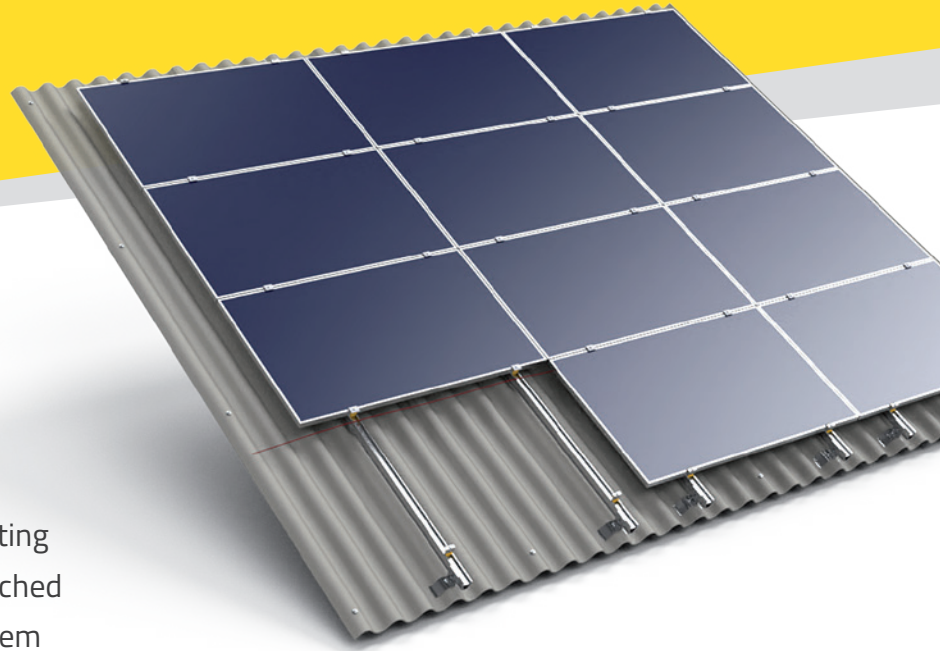


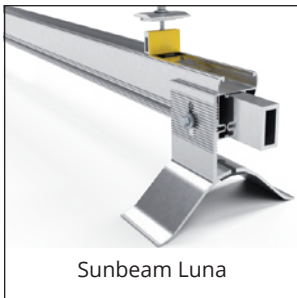
# Sunbeam Luna Fibre Cement

## Product sheet

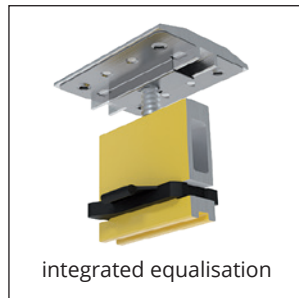


### Installing solar panels? Start with the basics!

Sunbeam Luna is a sophisticated mounting system for installing solar panels on pitched roofs. The clever construction allows them to be mounted incredibly quickly and provides the best possible support.



Sunbeam Luna



integrated equalisation



reuse of roofing  
sheet screws



easy mounting

### Innovative features

- direct potential equalisation
- pre-assembled screws in terminals
- no sharp edges, cables are always protected
- suitable for all types of optimizers
- reuse of roofing sheet screws
- the corrugated sheet adapter will always be properly upright thanks to the T-shaped slot
- solid support to the purlin in the lower part of the wave
- unique, patented alignment tool to ensure an even distance between the panels

Sunbeam Luna is a 100% CO<sub>2</sub> neutral product



# A solution for every project

## Sunbeam Luna: the innovative mounting system for installing solar panels on pitched roofs

- Luna was developed to support panels on the long side, exactly where the panel manufacturer requires it.
- Luna was developed to provide maximum support with a minimum amount of high-quality material.

General properties	
materials used	high-quality aluminium, plastic (ABS) from recycled raw materials, stainless steel screws
panel orientation	landscape
suitable roof types	fibre cement corrugated sheet
loading	up to 2,400 Pa tension and 5,400 Pa pressure on max. 2.3m <sup>2</sup>
warranty	consult warranty period and specific warranty conditions at: <a href="http://www.sunbeam.solar/downloads">www.sunbeam.solar/downloads</a>

Technical specifications
<ul style="list-style-type: none"><li>▪ watertight due to integrated cellular rubber sealing</li><li>▪ panel angle equal to the roof angle</li><li>▪ 50 mm clamping width</li><li>▪ suitable for panel thicknesses from 30 to 40 mm</li><li>▪ space between panels is 10 mm</li></ul>

