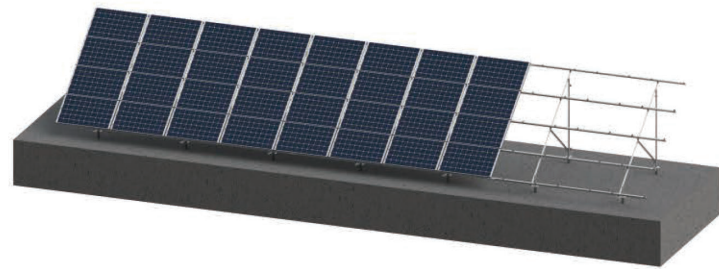
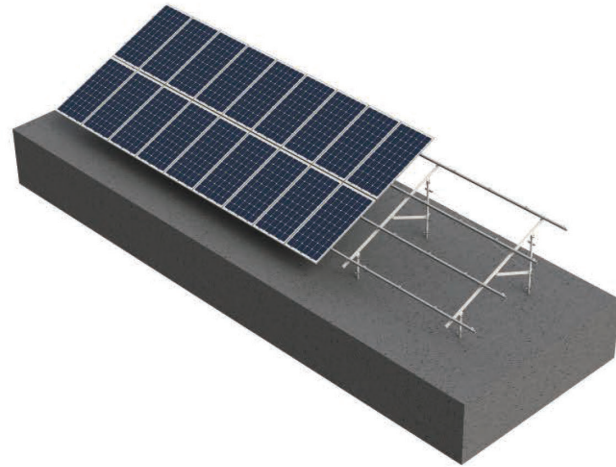


【 Steel Ground mounting system 】



Landscape



Portrait

Advantage:

- 1. Lower cost;
- 2. R&D Team; Innovated design;
- 3. Suitable for slope

Design Conditions	
Application:	Open terrain
Wind speed:	Up to 70 m/s (Australia wind region D)
Snow load:	200cm
PV module:	Framed, unframed
Layout way:	Landscape/portrait
Elevation angle:	≤ 60 °
Material:	Q235B/Q355B
Foundation:	Spiral pile/cement foundation
Standard:	AS/NZS1170.2:2011, JIS C 8955:2017
Warranty:	10 years
Surface treatment:	Hot Dip Galvanized 80μm

【 Fence 】



Introduction	
Surface treatment:	Galvanized iron wire (pretreatment) → plastic dipping (post treatment)
Color:	Usually white, brown/customization
Foundation:	direct-driven; separated mode; concrete block
Height:	1000mm -1800mm/customization
Door:	Single/double
Mesh size:	74*150、50*150/customization
Characteristics:	1. Galvanized iron wire (pretreatment) and dipping (post treatment) is more resistant to corrosion. 2. Anti theft style can prevent climbing.