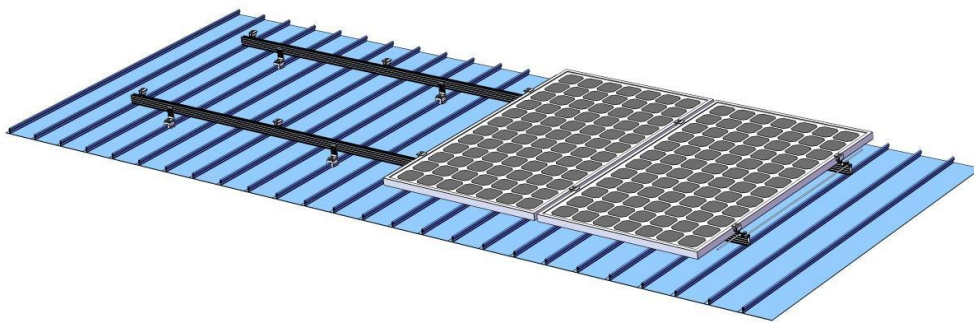


TIN- Metal roof mounting system

Powerack Tin roof systems divided into two fixing methods:

1. Drilling solutions, like bracket L-feet, hanger bolt, T type hook etc;
2. Standing seam clamp, Direct mounting, No damage to the roof.

Unique designed of Mid&End clamps are used for 30-40mm thickness solar modules. A design that includes major specifications saves you inventory cost, quick and easy to install. Innovative design of rail connect base-support can effectively increase the product strength, ensure the safety of the product use. Powerack have a large variety of tin roof brackets provide customers options. Customized allowed according to customer needs to meet special installation requirements.



Technical features:

Product name	Metal roof mounting system
Application	Metal roof
Inclination	Parallel to the roof
Material	AL6005-T5, SUS304, EPDM
Finish	AL 6005-T5 Anodized, SUS 304 Shot blasting
Standard	TUV, AS/NZ1170.2, JIS C 8955, MCS 012, TUV, UL2703 etc;
Tilt angle	5°~60°
Module orientation	Landscape or Portrait

Product advantages:

1. Good heat absorption.
2. Good waterproof and rain protection, convenient installation, and flexibility.
3. Excellent quality, Low price
4. Provide customized services