



## HELOC<sup>®</sup> PRO

GS10-M108-BF  
(390 Wp - 405 Wp)



### High Saving

Lower LCOE, reduced BOS cost, shorter payback time



### PID Resistance

Excellent Anti-PID Performance guarantee limited power degradation for mass production



### High Efficiency

Excellent module conversion efficiency of up to 20.66%



### IP68 Junction Box

High waterproof level



### Low-light Performance

Advanced glass and cell surface textured design ensure excellent performance in low-light environment



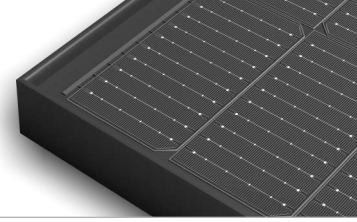
## INDUSTRY LEADING PROTECTION



12 Years Warranty For  
Materials And Processing



25 Years Warranty For  
Linear Power Output



## TECHNICAL DATA

Electrical Parameter at STC	Monocrystalline Module			
Module Type	GS10-M108-BF			
Capacity rating – Pmax(Wp)	390	395	400	405
Power Tolerance (%)	0 - 2	0 - 2	0 - 2	0 - 2
Module efficiency (%)	19.90	20.15	20.40	20.66
Rated voltage - Vmp(V)	30.76	30.92	31.10	31.26
Rated current - Imp(A)	12.66	12.75	12.85	12.93
Open circuit voltage - Voc(V)	37.00	37.05	37.10	37.15
Short circuit current - Isc(A)	13.41	13.44	13.47	13.50

Under Standard Test Conditions (STC) of irradiance 1000 W/m<sup>2</sup>, spectrum AM 1.5 and cell temperature of 25°C. Except Pmax, all other parameters have a tolerance of ±3%.

## PERMISSIBLE OPERATING CONDITIONS

Temperature range	-40°C to +85°C
Maximum system voltage	1500 VDC
NOCT	45± 2°C
Hail resistance	Max. diameter of 25 mm with velocity 23 m/s

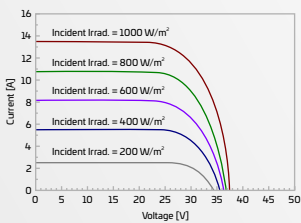
## TEMPERATURE COEFFICIENTS (TC)

Temperature Coefficient (Voc)	-0.28% /°C
Temperature Coefficient (Isc)	0.048% /°C
Temperature Coefficient (Pmax)	-0.35% /°C

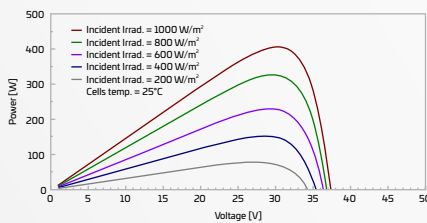
## PACKAGING CONFIGURATION##

Number of Modules per Pallet	31
No of pallet	26
No of module, 40ft HC container	806

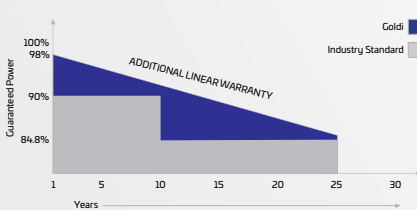
## IV CURVE



## PV CURVE



## LINEAR GRAPH

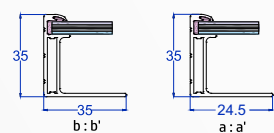
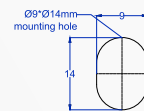
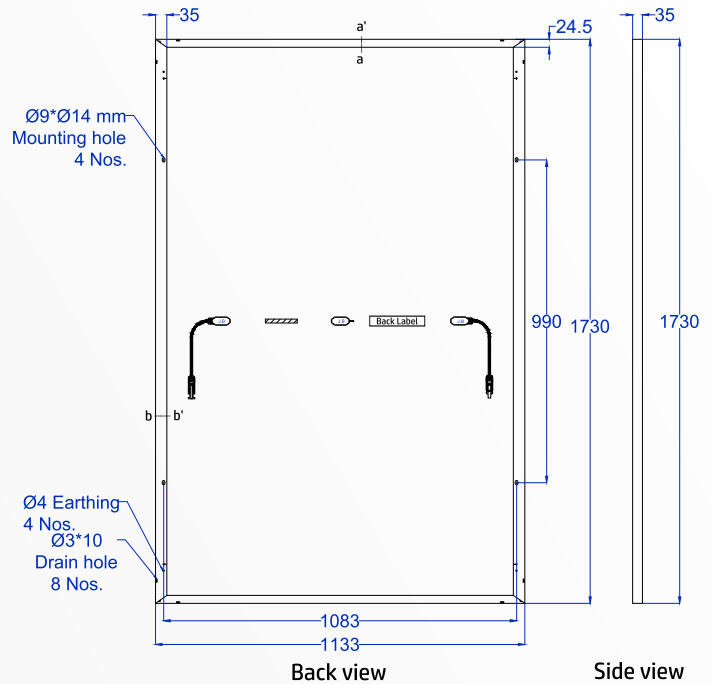


Power Degradation: <2% for First Year  
<0.55% / Year in 2-25 Years

## MECHANICAL SPECIFICATION

Solar cells	108 HC monocrystalline Monofacial (PERC), Multi BB
Encapsulation	Ultra - clear PID free EVA (Ethylene-Vinyl-Acetate)
Backside	UV protected black backsheet
Frame	Black Anodized Aluminium Alloy
Front glass	3.2 mm, High Transmission, AR Coated Tempered Glass
Dimensions	(L) 1730 mm x (W) 1133 mm x (H) 35 mm
Weight	~21 Kg
J-box	IP 68 certified, 3 diodes, Split junction box
Series Fuse Rating	25 A
Cable	Solar cable 400 mm length, 4 mm <sup>2</sup>
Connectors	MC4 compatible connectors
Application Class	Class A
Electrical Safety	Class II
Fire Safety	Class C ( Type 1)
Surface load	Snow load 5400 Pa, Wind load 2400 Pa

## DRAWING (MEASUREMENTS ARE IN MM)



## PRODUCT CERTIFICATIONS

IEC 61215: 2016, IEC 61730: 2016,  
UL 61730-1 & 2, CEC

## MANAGEMENT SYSTEM CERTIFICATIONS



ISO 9001  
ISO 14001  
ISO 45001

UTILITY | INDUSTRIAL | AGRICULTURE | RESIDENTIAL

- \*\*Quantity of modules/container may get changed without prior notice. Confirm with our sales representative before placing order.
- For handling & installation instructions, refer to Goldi's installation manual available on the company website
- Before placing an order, confirm your requirements with our sales representative
- The electrical data provided here is for reference purposes only
- Dispose of a product as e-waste after the end of its working life
- Refer to Goldi's warranty document for terms and conditions
- Due to constant product modifications, Goldi reserves the right to amend the above specifications without prior notice
- Images in the datasheet are for representation purpose only

1800 833 5511

info@goldisolar.com

goldisolar.com