

72HD540-560W

P-type Half-cell Bifacial Module (72)

PRODUCT FEATURES



High Power Output
Low LCOE



Maximum Power
560W+



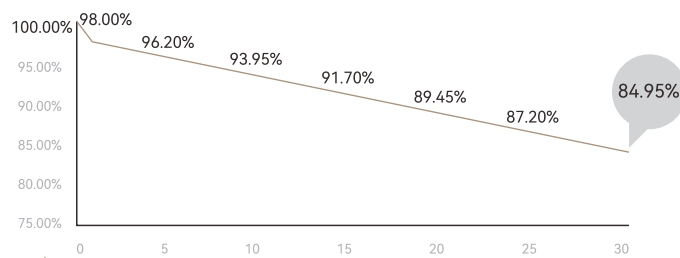
High
Reliability



Low
LID

POWER WARRANTY

1st year <2%, 0.45% power degradation per year from 2 to 30 years



12-year Warranty for Materials



30-year Warranty for Linear Power Output

MANAGEMENT SYSTEM AND PRODUCT CERTIFICATION

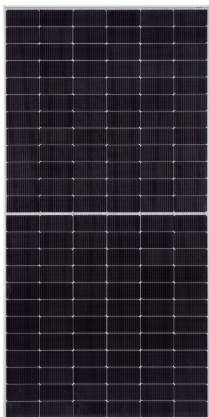
ISO9001: 2015/Quality Management System

ISO14001: 2015/Environment Management System

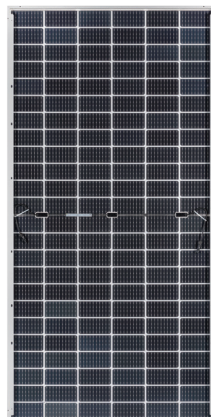
ISO45001: 2018/Occupational Health and Safety Management System



Front



Rear



Electrical Characteristics (STC)

| | | | | | |
|--|-------|-------|-------|-------|-------|
| Module Type: 72HDXXX | | | | | |
| Maximum Power: Pmax [W] | 540 | 545 | 550 | 555 | 560 |
| Open Circuit Voltage: Voc [V] | 49.70 | 49.90 | 50.10 | 50.30 | 50.50 |
| Short Circuit Current: Isc [A] | 13.78 | 13.83 | 13.88 | 13.93 | 13.98 |
| Voltage at Maximum Power: Vmp [V] | 41.56 | 41.76 | 41.96 | 42.16 | 42.36 |
| Current at Maximum Power: Imp [A] | 13.00 | 13.05 | 13.11 | 13.17 | 13.23 |
| Module Efficiency: η [%] | 20.9 | 21.1 | 21.3 | 21.5 | 21.7 |
| STC: Irradiance 1000W/m ² , Cell Temperature 25°C, Air Mass1.5, Measuring Tolerance: \pm 3% | | | | | |

Electrical Characteristics (NMOT)

| | | | | | |
|---|-------|-------|-------|-------|-------|
| Maximum Power: Pmax [W] | 408.6 | 412.4 | 416.2 | 420.0 | 423.8 |
| Open Circuit Voltage: Voc [V] | 46.48 | 46.74 | 47.01 | 47.28 | 47.47 |
| Short Circuit Current: Isc [A] | 11.04 | 11.08 | 11.12 | 11.16 | 11.20 |
| Voltage at Maximum Power: Vmp [V] | 38.45 | 38.67 | 38.90 | 39.12 | 39.31 |
| Current at Maximum Power: Imp [A] | 10.62 | 10.66 | 10.70 | 10.74 | 10.79 |
| NMOT: Irradiance 800W/m ² , Ambient Temperature 20°C, Air Mass1.5, Wind Speed 1m/s | | | | | |

Electrical characteristics with different rear side power gain

| | | | | | | |
|-----|-------------------------------|-------|-------|-------|-------|-------|
| 5% | Maximum Power: Pmax[W] | 567.0 | 572.3 | 577.5 | 582.8 | 588.0 |
| | Module Efficiency: η [%] | 21.9 | 22.2 | 22.4 | 22.6 | 22.8 |
| 15% | Maximum Power: Pmax[W] | 621.0 | 626.8 | 632.5 | 638.3 | 644.0 |
| | Module Efficiency: η [%] | 24.0 | 24.3 | 24.5 | 24.7 | 24.9 |
| 25% | Maximum Power: Pmax[W] | 675.0 | 681.3 | 687.5 | 693.8 | 700.0 |
| | Module Efficiency: η [%] | 26.1 | 26.4 | 26.6 | 26.9 | 27.1 |

Temperature Ratings

| | |
|--------------------------------|--------------|
| Temperature Coefficient (Pmax) | -0.34%/°C |
| Temperature Coefficient (Voc) | -0.28%/°C |
| Temperature Coefficient (Isc) | 0.05%/°C |
| NMOT | 45 \pm 2°C |

Mechanical Parameters

| | |
|------------------|--|
| Cells | TPC |
| Cell Orientation | 144[6X24] |
| Dimension | 2278 \pm 2 X1134 \pm 2X30mm |
| Weight | 32.7kg |
| Front Glass | 2.0mm high transmittance, AR coated tempered glass |
| Rear Glass | 2.0mm high transmittance, coated tempered glass |
| Frame | Anodized aluminum alloy frame |
| Junction Box | IP68, 3 diodes |
| Output Cable | 4.0mm ² |
| Cable Length | +400mm, -200mm, length can be customized |
| Wind/Snow Load | 2400Pa/5400Pa |
| Packaging | 36pcs per pallet, 720pcs per 40'HC |

Operating Parameters

| | |
|----------------------------|-------------|
| Operational Temperature | -40°C~+85°C |
| Maximum System Voltage | 1500V DC |
| Maximum Series Fuse Rating | 30A |
| Power Output Tolerance | 0~+5W |
| Maximum Bifaciality | 70 \pm 5% |

Drawings (Unit: mm)

