

# REVO VM III-T series

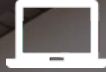
## Off Grid Solar Inverter

### 4/6KW



#### Max PV input current 27A

Designed with 27A PV input current compatible to the market trend of increased Imp in solar panel



#### Easy access

Two outputs for smart load management  
The second output can be scheduled on & off based on setting cut-off voltage or SOC



#### Battery

Battery equalization function extend lifecycle  
Reserved com port (RS-485,CAN) for BMS



#### Move

Detachable LCD control module with various communications



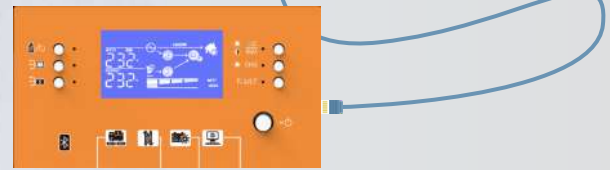
#### Off-Grid

Revo VM III-T series is suitable for off-grid applications.

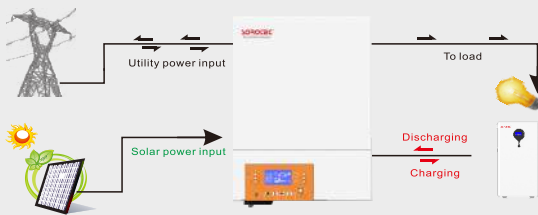


#### Interface

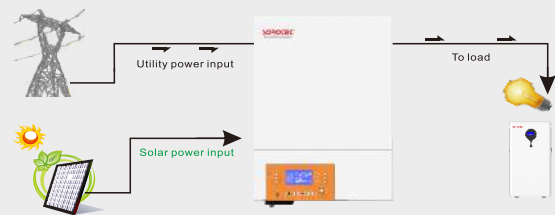
Global cloud platform Mobile APP Anytime and anywhere Open APP, support power internet applications



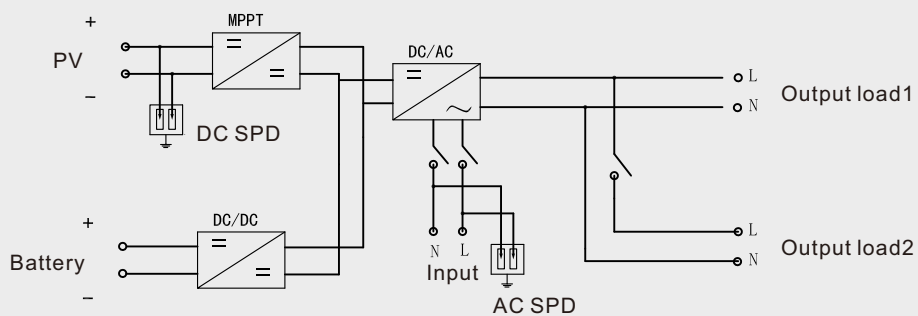
#### With battery connected



#### Without battery connected



#### Schematic diagram



Technical Specification	REVO VM III-T series	
Rated power	4000VA/4000W	6000VA/6000W
<b>AC Input</b>		
AC voltage	230VAC	
Voltage Range	170-280VAC(For Personal Computers);90-280VAC (For Home Appliances)	
Frequency Range	50Hz/60Hz(Auto sensing)	
<b>AC Output</b>		
Surge power	8000VA	12000VA
Voltage regulation(Batt Mode)	230VAC±5%	
Rated frequency	50/60Hz	
Efficiency(Peak)	up to 93.5%	
Automatic switching time	10ms (For Personal Computers);20ms (For Home Appliances);	
<b>SOLAR CHARGER &amp; AC CHARGER</b>		
Maximum PV Array Open voltage(V)	500VDC	
Maximum PV Array power	5000W	6000W
MPPT voltage range(V)	60~450VDC	
Maximum input current	27A	
MPPT tracker/strings	1	
Maximum solar charge current	120A	
Maximum AC charge current	100A	
Maximum charge current	120A	
<b>Battery</b>		
Battery voltage	24VDC	48VDC
Floating Charge voltage	27VDC	54VDC
Overcharge Protection	33VDC	63VDC
Battery type	lithium /Lead-acid	
<b>Protection&amp; Feature</b>		
AC overcurrent,	Yes	
AC overvoltage	Yes	
Over-heat protection	Yes	
Smart load management	Yes (for 4/6k)	
<b>General Parameter</b>		
Operation temperature	0°C ~ 50°C	
Relative humidity	0 ~95% (non-condensing)	
Altitude 2,000m	(>2,000 Derating)	
Dimensions D x W x H (mm)	434x311x126.5	
Weight (kg)	8.5	9
<b>Display and communication</b>		
Display	Touch key+LCD	
Interface	Standard:RS485,CAN ; Opt: Wifi ,Bluetooth	
Safety standard	EN/IEC 62109-1,EN/IEC 62109-2	