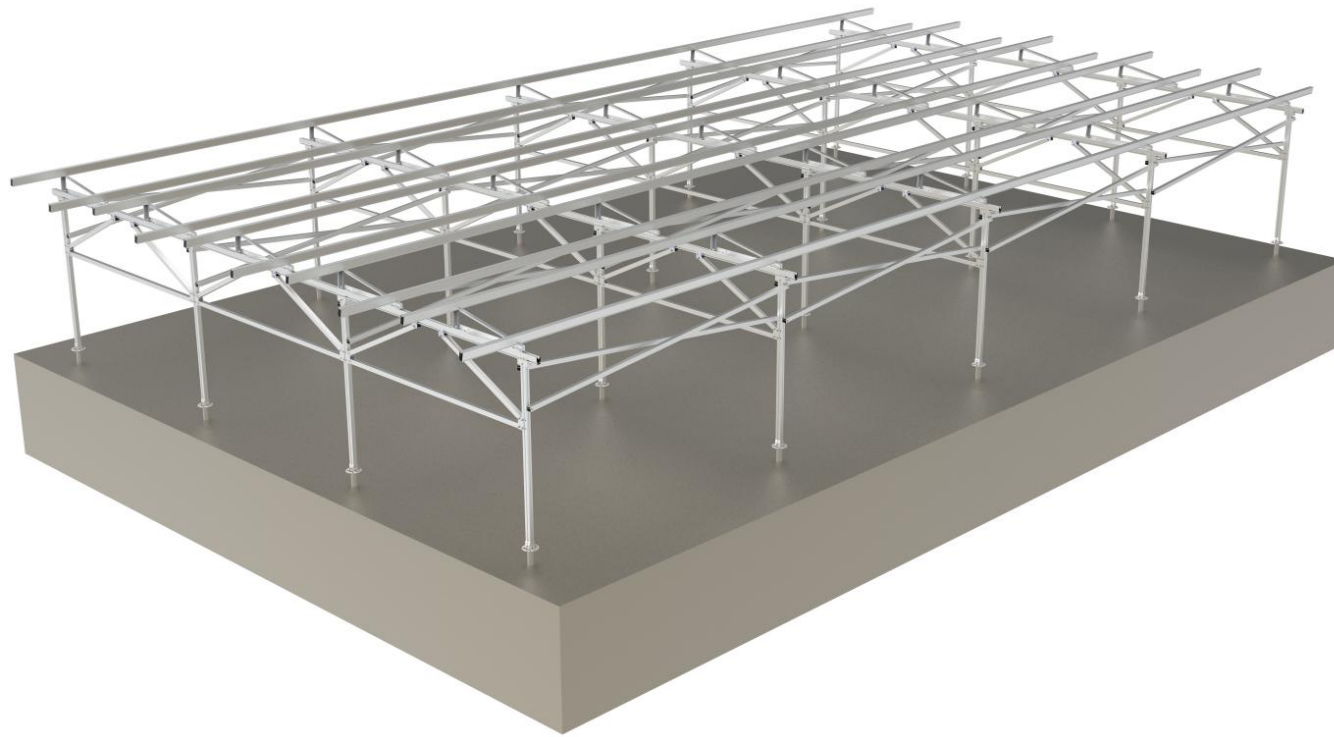
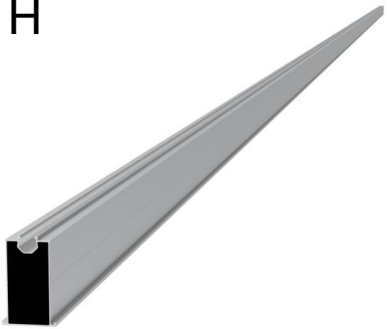


Z Bracket Mounting

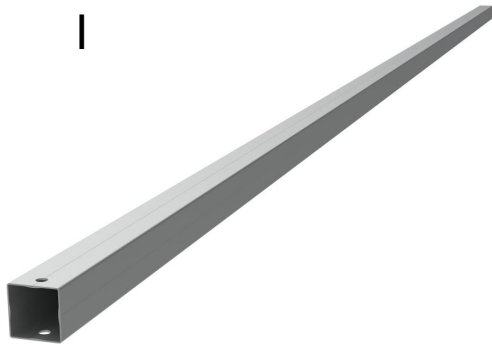


H



XHF-R01-8#-S

I



XHF-SC-F/R/TL

Features:

- 1. Adopting high strength aluminum alloy 6005-T5 and stainless steel 304 material
- 2. Some components are pre-assembled in factory, so that to reduce the labor cost and installation time on site
- 3. High anti-corrosion
- 4. Making customized as request

Advantages:

- Vertical and horizontal module installation are possible
- Variable module pitch from 5° to 40°
- Maximum flexibility thanks to height-adjustable module clamps and end clamps
- Long service life, complete recyclability and corrosion resistance