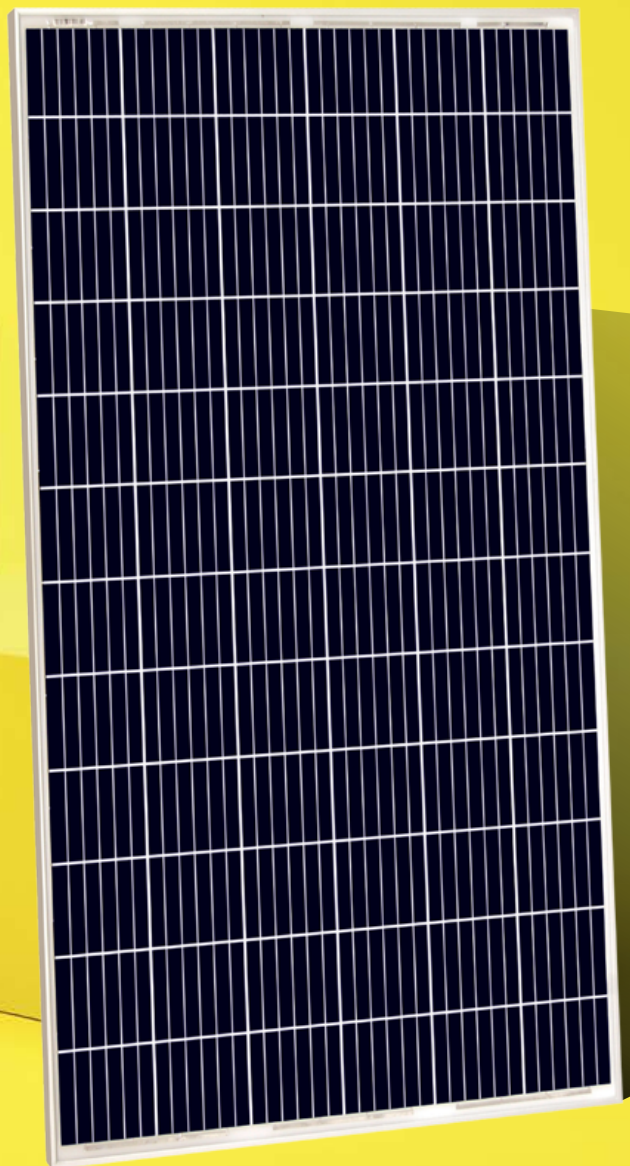




Technical manual

ELERIX SOLAR PANEL

Poly Crystalline Solar Module
290Wp



www.elerix.com

[PRODUCT WEBPAGE >](#)

EXS-290P-S

ELERIX SOLAR PANEL

Poly Crystalline Solar Module
290Wp



ELERIX Poly Crystalline Solar Module 290Wp

ELERIX Solarline modules strictly comply with IEC standards, following stringent BOM quality testing and 100% EL testing along the fully-automated production line to assure each piece of module the best performance.

Key Features



Excellent module efficiency: 17.82%



IP68 junction box for long-term weather endurance



Heavy snow load up to 5400 Pa, wind load up to 3600 Pa



PID: Selected material and stringent quality system ensure PID free



Applicable to harsh environment of deserts, farmlands and seashores



Much lower risk of Hot Spot

Warranty

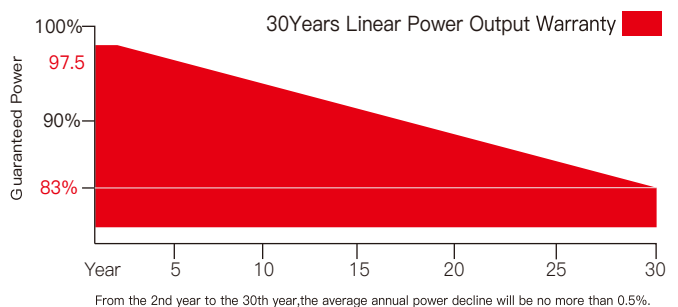
Linear power output warranty



- ▶ 12 years minimum 92% power output
- ▶ 30 years minimum 83% power output



Product warranty on materials and workmanship
According to the applicable ELERIX Limited Warranty Statement

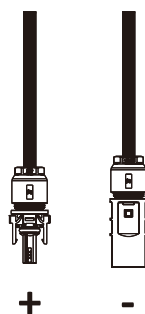
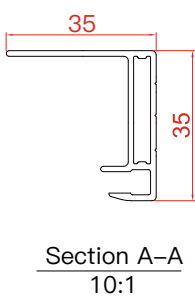
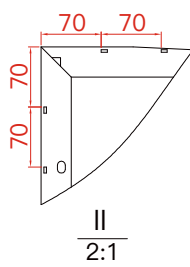
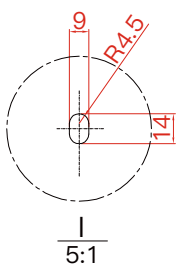
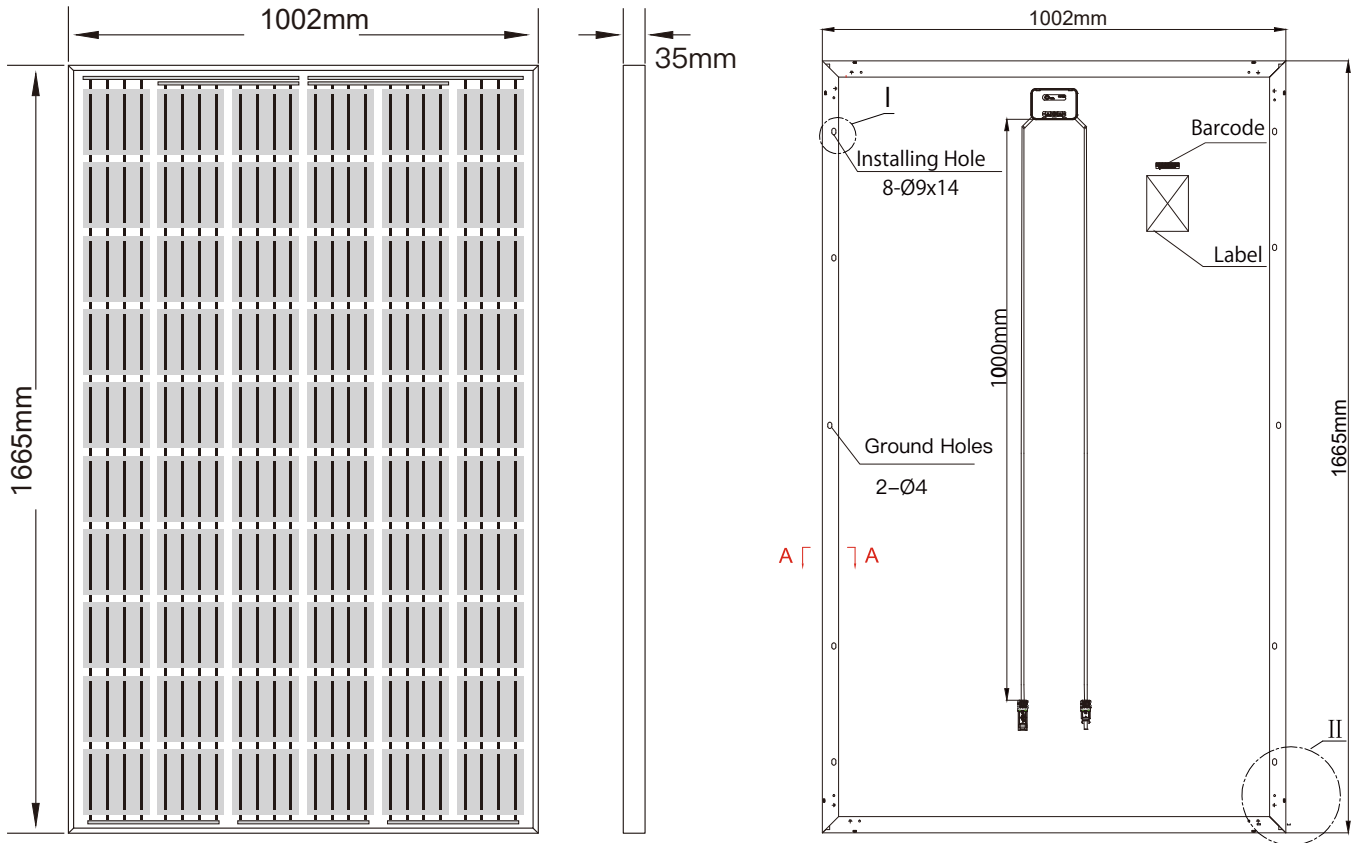


Certification



ELERIX SOLAR PANEL

Poly Crystalline Solar Module
290Wp

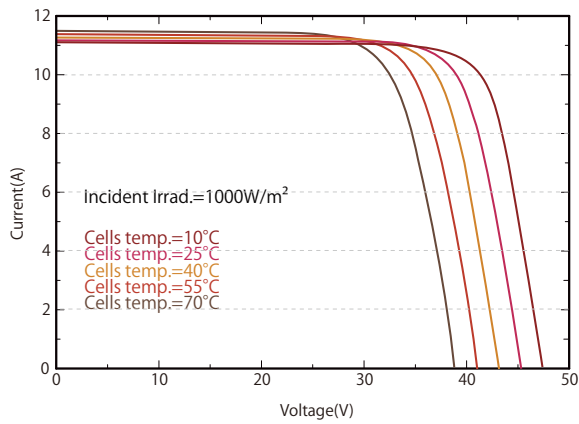


ELERIX SOLAR PANEL

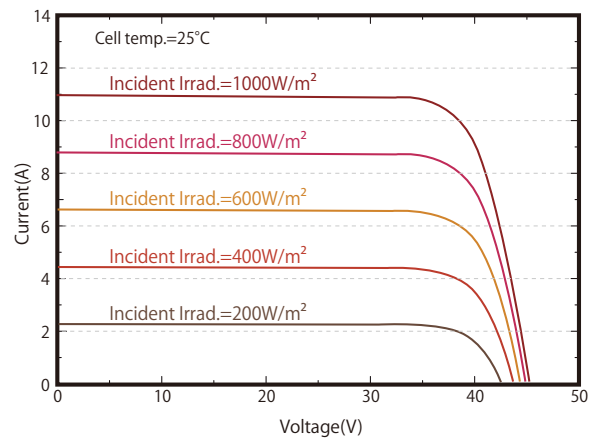


Poly Crystalline Solar Module
290Wp

I-V Curve at Different Temperature



I-V/P-V Curve at Different Irradiation



Electrical Specification	EXS-290P-S
Maximum Power (Pmax)	290W
Module Efficiency	17.82%
Open Circuit Voltage (Voc)	38.40V
Short Circuit Current (Isc)	9.53A
Maximum Power Voltage (Vmp)	31.60V
Maximum Power Current (Imp)	9.17A
Maximum System Voltage	ICE 1500 VDC/UL 1500 (VDC)

STC: Irradiance: 100W/m², Module Temperature: 25°C, Air Mass: 1.5

ELERIX SOLAR PANEL



Poly Crystalline Solar Module
290Wp

Electrical DATA@NOCT	EXS-290P-S
Pmax [W]	216.63
Vm [V]	29.46
Imp [A]	7.35
Voc [V]	35.99
Isc [A]	7.71

NOCT: Irradiance: 800W/m², Ambient Temperature: 20°C, Air Mass: 1.5, Wind Speed: 1m/s

Mechanical Specification	
Solar Cell Type	Poly Crystalline
Number of Cells	60pcs (10x6)
Module Size	1665x1002x35mm
Weight	18.0kg
Glass	3.2mm tempered glass
Back Sheet	White
Frame	Anodized aluminium alloy, silver
Junction Box	IP68
Quantity of Diodes	3pcs
Cable	4.0mm ² 1000mm
Connector	MC4 Compatible
Wind/Snow Load	3600pa/5400pa

ELERIX SOLAR PANEL

Poly Crystalline Solar Module
290Wp



Packaging Configuration

Modules per ox	30 pieces
Number per 20GP	360 pieces
Modules per 40' HQ	910 pieces

Temperature Characteristic

NMOT (Nominal Module Operating Temperature)	45°C (±2°C)
Temperature Coefficient of P _{MAX}	- 0.41%/°C
Temperature Coefficient of U _{oc}	- 0.32%/°C
Temperature Coefficient of I _{sc}	0.05%/°C

Maximum Ratings

Operational Temperature	-40 to +85°C
Maximum System Voltage	1500V DC (IEC) 1500V DC (UL)
Max Series Fuse Rating	20A
Snow Load	54000Pa (3600Pa)
Wind Load	3600Pa (1600Pa)

*design load with safety factor 1.5 (DO NOT connect Fuse in Combiner Box with two or more strings in parallen connection)

Are you interested in more details?
Visit our online presentation.

[PRODUCT WEBPAGE >](#)