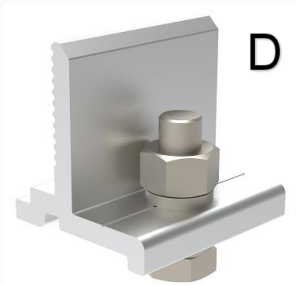


## Components



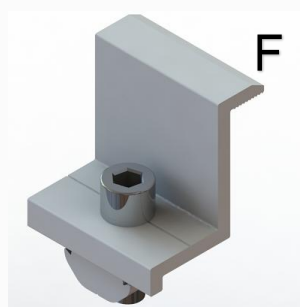
D

XHF-BR-03, rail clamp  
Al6005-T5 & SUS304



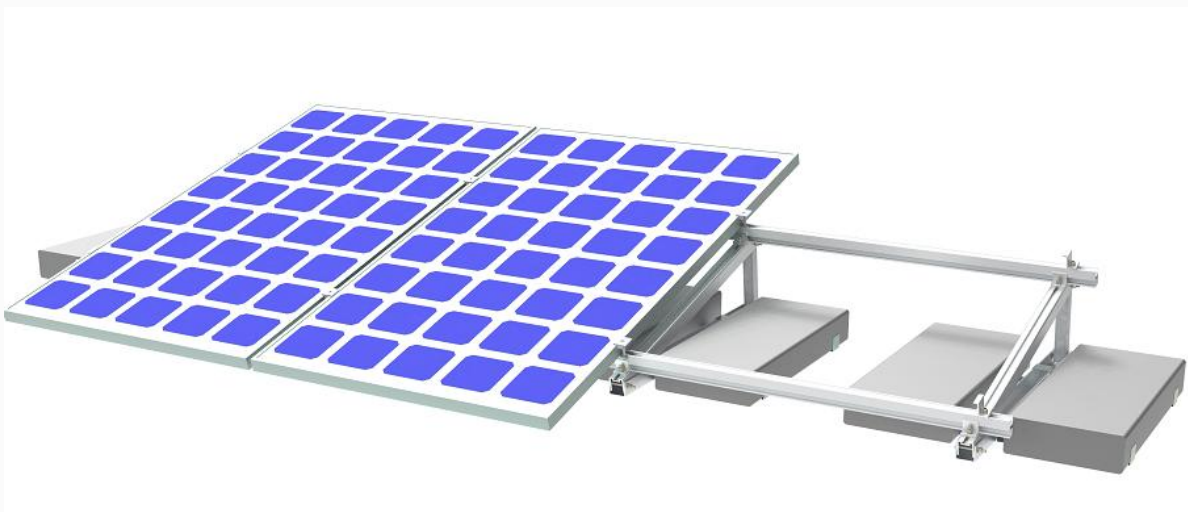
E

XHF-IC-40, mid clamp  
Al6005-T5 & SUS304



F

XHF-SC-40, end clamp  
Al6005-T5 & SUS304



## Feature:

- The solar roof mounting system with high strength material and it is mostly used in solar residential installation
- the side holes can be quickly fixed and meet the European standard
- It can install framed or frameless solar modules.
- We developed to make PV projects for flat roofs more economical, durable and reliable

## Parameters:

- Light Weight, Convenient and Durable. Economical
- Application: Flat Concrete Roof or Open Field
- Max Wind Speed: 60 m/s
- Snow Load: 1.4 KN/m<sup>2</sup>
- Material: Aluminum 6005-T5 & Stainless Steel 304 Warranty: 10 years warranty; 25 years service life.
- Foundation: ground screw or concrete block
- Tilt Angle: 0-60°

## Advantage:

- Ballast mount systems are designed to stand strong against strong winds.
- Most flat roofs aren't 100% flat, and that's intentional. They can have a small pitch of under ten degrees which helps with water drainage.
- Static stability ensured by high strength aluminum components
- Using the same parts to build typically South setup, North-South setup and East-West setup.
- Low point loads due to evenly spread load distribution on the roofs and aerodynamic design