

Electrical Characteristics

Module Type	M10-54-400	M10-54-405	M10-54-410	M10-54-415
	STC	STC	STC	STC
Maximum Power at STC (Pmp)	400	405	410	415
Open Circuit Voltage (Voc)	37.1	37.2	37.3	37.4
Short Circuit Current (Isc)	13.60	13.70	13.80	13.90
Maximum Power Voltage (Vmp)	30.8	30.9	31.0	31.1
Maximum Power Current (Imp)	12.99	13.10	13.21	13.32
Module Efficiency at STC(ηm)	20.7	20.8	21.0	21.2
Power Tolerance	(0,+3%)			
Maximum System Voltage	1500 VDC			
Maximum Series Fuse Rating	25A			

STC: Irradiance 1000 W/m² module temperature 25°C AM=1.5;

Temperature Characteristics

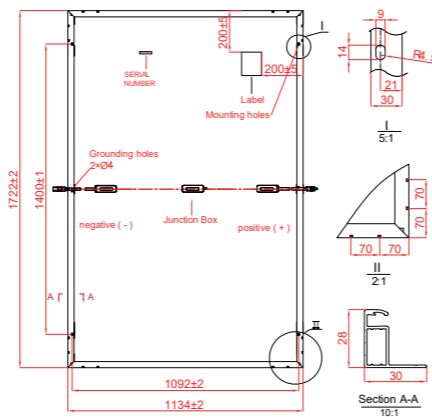
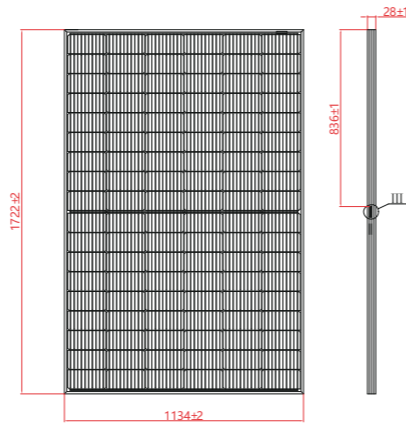
Pmax Temperature Coefficient	-0.34 %/°C
Voc Temperature Coefficient	-0.26 %/°C
Isc Temperature Coefficient	+0.05 %/°C
Operating Temperature	-40~+85 °C
Nominal Operating Cell Temperature(NOCT)	45±2 °C
Fire Rating	Class C

Mechanical Specifications

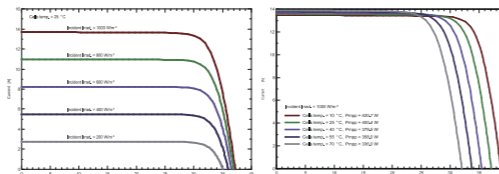
External Dimensions	1722 x 1134 x 28 mm
Weight	19.0kg
Solar Cells	PERC Mono (108pcs)
Front Glass	3.2 mm AR coating tempered glass, low iron
Frame	Anodized aluminium alloy
Junction Box	IP68,3 diodes
Output Cables	4.0 mm ² ,Portrait:900mm or Customized Length
Connector	Genuine MC4 Connector /Compatible MC4 Connector
Mechanical Load	Front side 5400Pa/ Rear side 2400Pa

Packing Configuration

	1722 x 1134 x 28 mm
Container	40'HQ
Pieces per Pallet	36+36
Pallets per Container	13
Pieces per Container	936



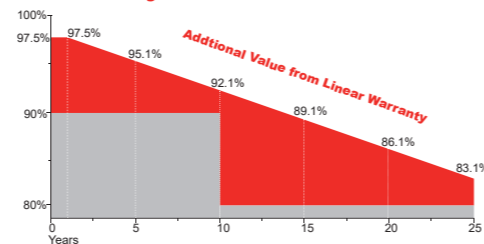
I-V Curve



Product Certificates



Warranty



10 YEARS Guarantee on product material and workmanship | **25 YEARS** linear power output warranty

Made in China



M10-54-400-415W