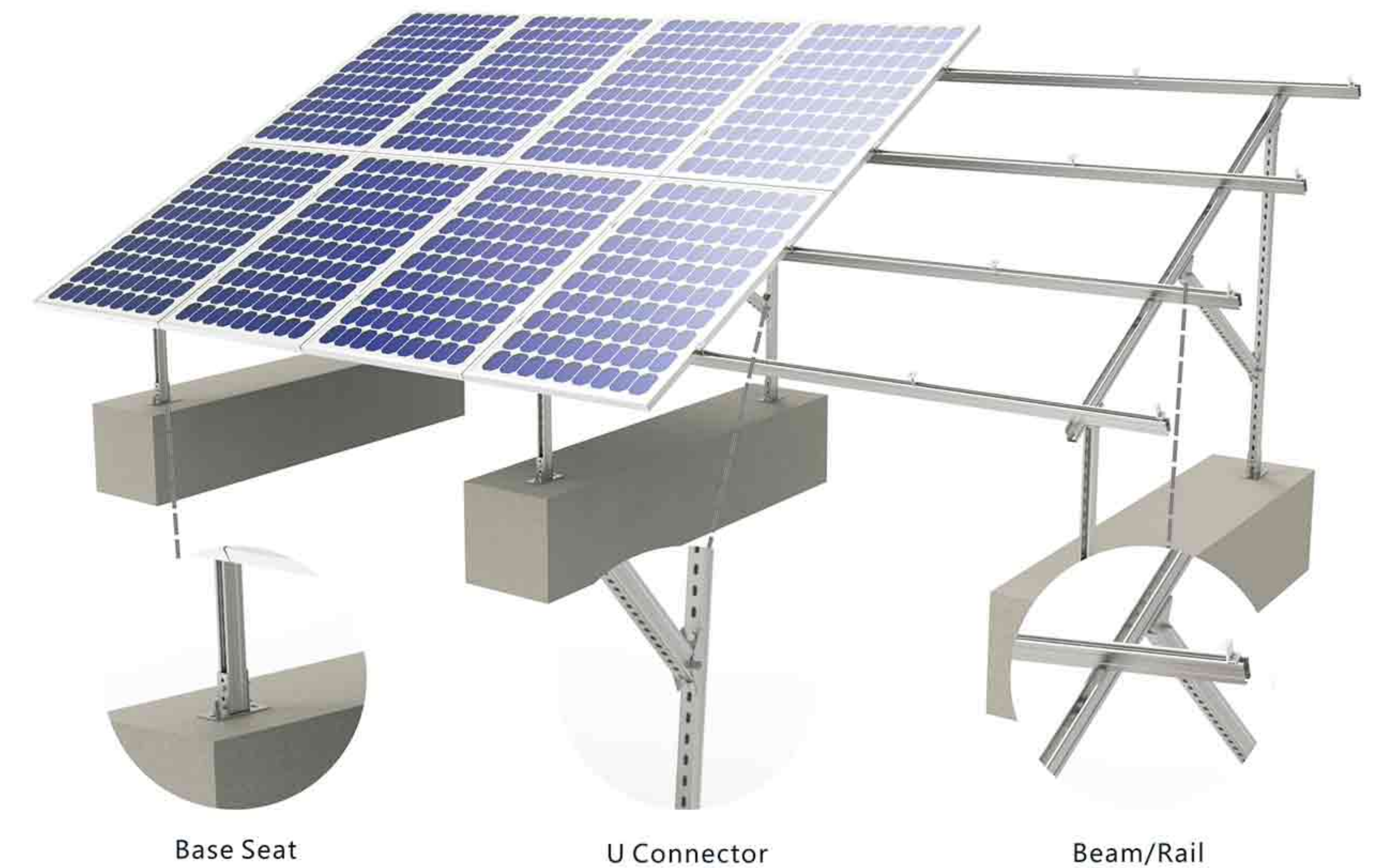




Steel Ground Mounting System



Features

Steel ground mounting system creates an economical and reliable solutions for photovoltaic projects. According to different site conditions, MAC steel or hot-dip galvanized carbon steel is adopted as the main material to form a stable and cost-effective design.

Components



Technical Parameter	
Application	Ground
Tilt Angle	0° - 45°
Foundation	Concrete Base/Ground Screw/C or U Steel
Wind Load	≤60 m/s
Snow Load	≤1.6 KN/m ²
Module Orientation	Landscape/Portrait
Standards	ASCE_7-10, JIS C8955: 2017, EN1090, International Building Code IBC 2009
Material	MAC Steel&Hot-dip Galvanized Steel Q235&AL6005-T5(Anodized)&SUS304



Beam/Rail
MAC Steel/
Hot-dip Galvanized
Steel Q235 optional
Length can be customized

A



Base Seat
Hot-dip Galvanized
Steel Q235

D



U Connector
Hot-dip Galvanized Steel Q235

B



Middle Clamp
30/35/40mm
AL6005-T5&SUS304&Plastic

E



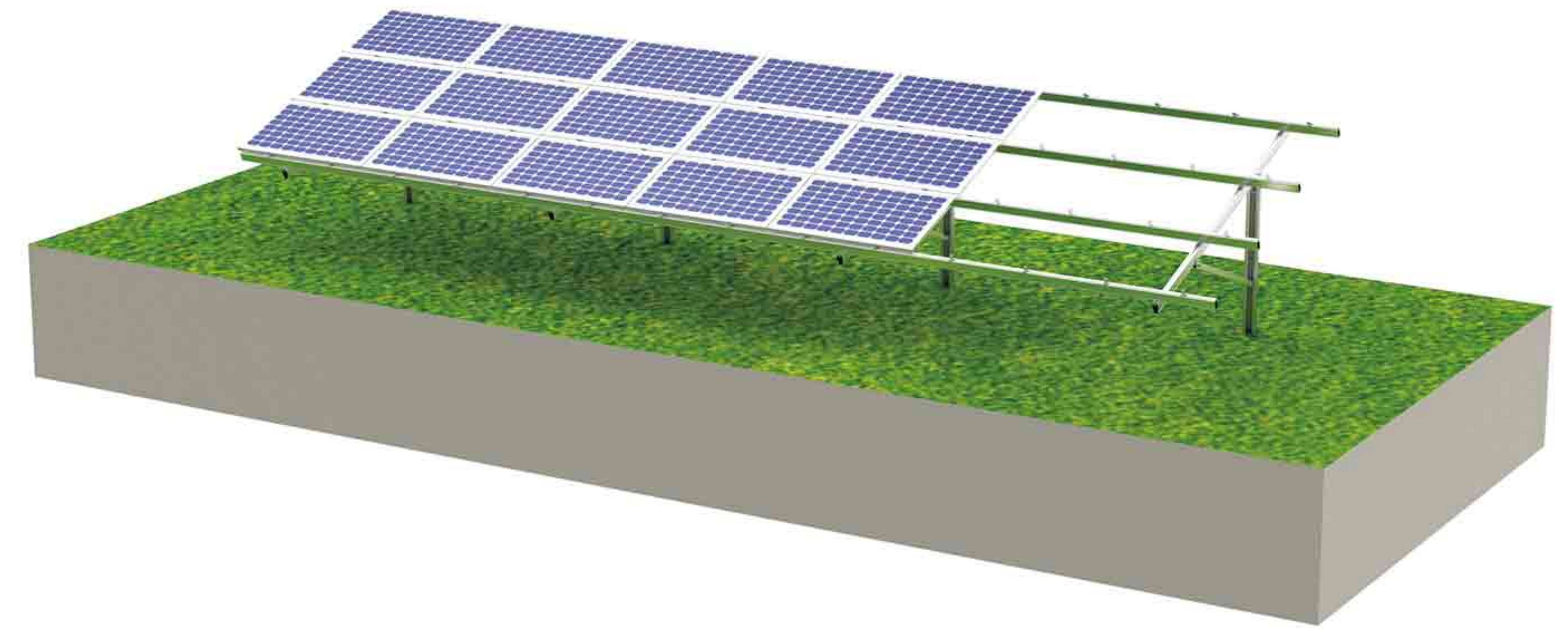
Rail Splice
Hot-dip Galvanized Steel Q235

C



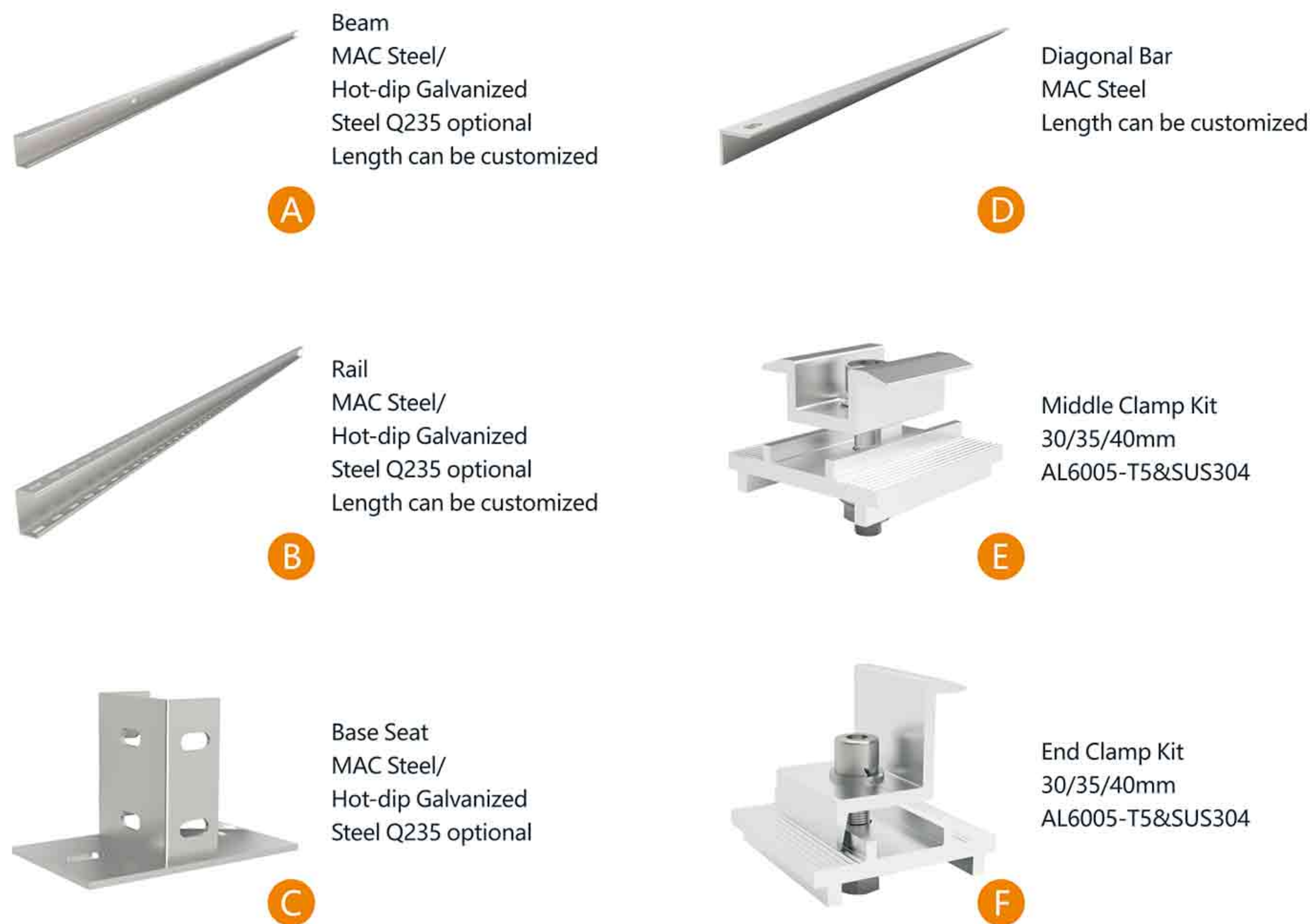
End Clamp
30/35/40mm
AL6005-T5&SUS304&Plastic

F



Components

C Steel Ground Mounting System



Components

Pole Steel Ground Mounting System

