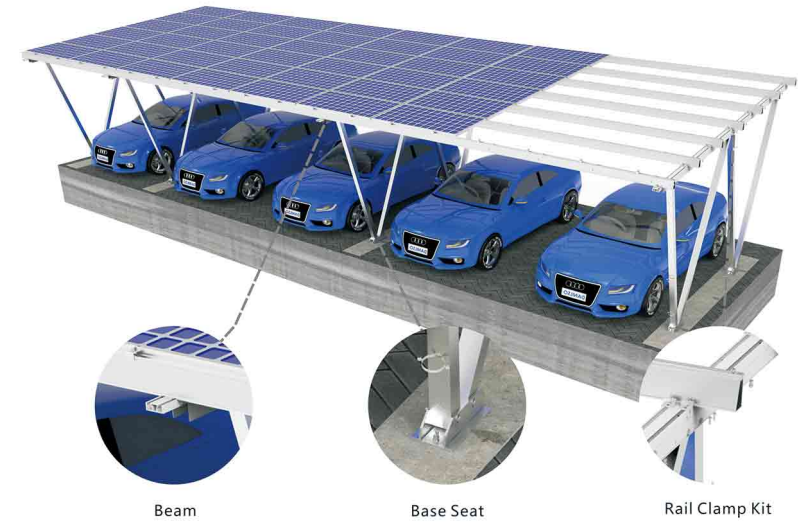




## Aluminum Solar Carport



## Features

Aluminum solar carport can be customized to meet the requirements of each project. The panels will make up the roof itself by mounting directly on the rails, instead upon the metal sheets or other canopies. It's an effective solution that is suitable for most houses and parking areas.

## Components



Technical Parameter	
Application	Ground
Tilt Angle	0° - 30°
Foundation	Concrete Base
Wind Load	≤60 m/s - non-waterproof system ≤45 m/s - waterproof system
Snow Load	≤1.6 KN/m <sup>2</sup> - non-waterproof system ≤1.2 KN/m <sup>2</sup> - waterproof system
Module Orientation	Landscape/Portrait
Standards	ASCE 7-10, JIS C8955: 2017, EN1090, International Building Code IBC 2009
Material	AL6005-T5(Anodized)&SUS304



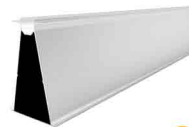
Beam  
AL6005-T5  
Length can be customized

A



Rail Splice  
AL6005-T5

D



Rail  
AL6005-T5  
Length can be customized

B



Base Seat  
AL6005-T5

E



Pillar  
AL6005-T5  
Length can be customized

C



Rail Clamp Kit  
AL6005-T5&SUS304

F