



AEROCOMPACT®

COMPACTPITCH XW

CompactPITCH XW is a rail-based racking system for framed or frameless PV modules on corrugated sheet metal, trapezoidal sheet metal or sandwich sheet metal roofs, as well as on corrugated fibre cement panels. In this impressively coherent concept the central structural element is the aluminium mounting rail, which offers a higher static load-bearing capacity due to its distinctive triangular shape.

- MODULAR MOUNTING RAIL SYSTEM
- HEIGHT-ADJUSTABLE RAILS
- HIGH STATIC STABILITY
- LONG THREAD FOR HEIGHT ADJUSTMENT
- SIMPLE AND FAST ASSEMBLY
- 25-YEAR PRODUCT WARRANTY

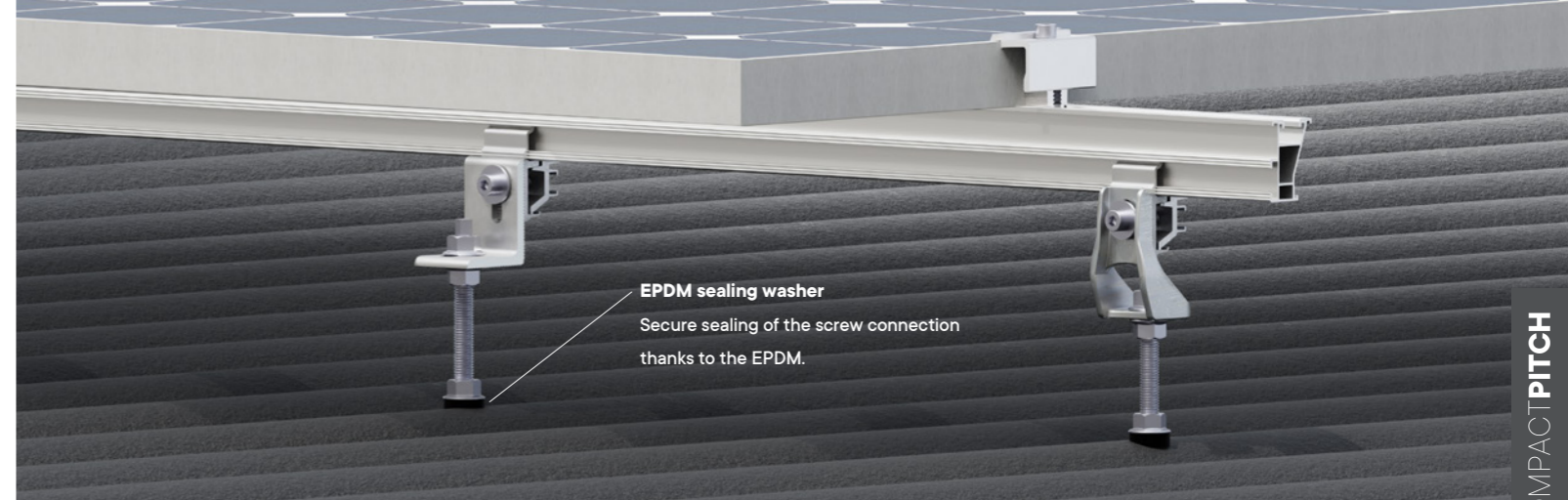


THE CHALLENGE

Corrugated sheet metal, trapezoidal sheet metal and sandwich sheet metal roofs, along with corrugated fibre cement panels demand an intelligent racking system and simple installation. Many existing systems on the market have obvious weaknesses in terms of stability. We have been searching for an optimised solution to this problem.

THE SOLUTION

Compared to other rail systems, the CompactPITCH XW requires less mounting material while maintaining the same product performance. The rail sits on a sturdy hanger bolt, which ensures a firm connection to the roof. This racking system provides a perfect solution for every area of application: the cost-optimised XW version, designed for regions with little wind and snow, is just as convincing as the new XWS version, which was specially designed for high snow and wind loads and has the highest static values.



EPDM sealing washer
Secure sealing of the screw connection thanks to the EPDM.

Image: The versions are not mixed with each other.

COMPACTPITCH



Mounting rail
The very high static load-bearing capacity of the aluminium X40 and X50 mounting rails is achieved via a distinctive triangular shape. Both product versions are also available in black.

Click clamp
The PV modules can be affixed to the mounting rails using the click clamp with integrated earthing pins. The universal clamp for all systems is height-adjustable from 30 – 46 mm and can be conveniently clicked into place.

The hammer head screw
The standard version has a hammer head screw and nut. Installation is quick and easy at any position of the rail without threading at the end of the rail.

The hanger bolt
The rail sits on a sturdy hanger bolt, which ensures a firm connection to the roof. A long, metric thread on the hanger bolt allows the whole system to be mounted horizontally and to compensate for any unevenness.

CL click fast fixation
When you need to get things done even faster! If that's the case, the XW hanger bolts with the pre-mounted CL click fast fixation are available as an alternative. It is able to accommodate all X-mounting rails quickly and conveniently using the innovative click mechanism.

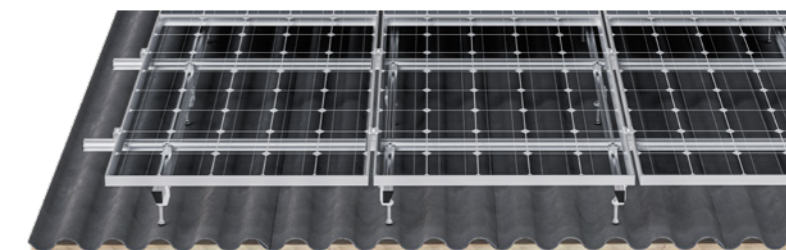
THE VERSIONS

The addition of the new CompactPITCH XWS hanger bolt set now also guarantees the challenging use of PV installations in snowy regions. The original, already proven CompactPITCH XW product version will continue to be the solution for roof installations in areas with little snow.

Version	XW	XWS NEW
Legend		
Available hanger bolt lengths a [mm]	180 mm, 200 mm, 250 mm, 300 mm	180 mm, 200 mm, 250 mm, 300 mm
Available hanger bolt diameter b [mm]	M10, M12	M10, M12
CL click fast fixation possible	Yes	Yes
Distance from the roof surface	At least 100 mm	At least 100 mm
Area of application	With reduced wind and snow loads	With high wind and snow loads
Minimum screw-in depth in roof battens	M10: min. 40 mm; M12: min. 48 mm	M10: min. 40 mm; M12: min. 48 mm

Cross connection

The installation of modules in landscape mode (landscape format) can be implemented using additional mounting rails. These are affixed directly to the standard mounting rails using the XPN cross connector.



AEROCOMPACT®

- **MINIMAL STORAGE**
- **DEVELOPED IN AUSTRIA**
- **CROSS-CONNECTION POSSIBLE**
- **25-YEAR PRODUCT WARRANTY**
- **CLICK CLAMP WITH GROUNDING PINS**
- **CE APPROVAL**

Description	Rail-based racking system for framed or frameless PV modules
Application	Corrugated sheet metal, trapezoidal sheet metal and sandwich sheet metal roofs along with corrugated fibre cement panels
Module dimensions	Any length and width, frame height 30 – 46 mm or frameless
Installation angle	Parallel to the roof
Distance to roof surface	At least 100 mm
Distance from the roof edge	No minimum distance, roof areas F and G in accordance with EN 1991-1-4 can be covered.
Max. building height	–
Max. roof inclination	60°, with suitable PV modules also steeper
Max. field size	Approx. 12 m, along continuous rail, otherwise unlimited
Min. field Size	1 module
Wind load	Generally up to 2.4 kN/m ²
Snow load	Compressive load when cross-connected up to 3.6 kN/m ²
Design / proof of stability	Software based on European / national standardisation
On-site requirements	Sufficient static load-bearing capacity of the roof structure and the building support structure must be ensured on site. The general terms and conditions of business and warranty as well as the user agreement apply.
Components	Module clamps with earthing pins, horizontal or cross-connected rail arrangement, hanger bolts
Materials	Load-bearing connecting parts made of aluminium EN AW 6063 T66, EN AW 6005 T6 and stainless steel 1.4301 / A2-70; seals made of EPDM cast steel with a zinc flake surface coating pursuant to DIN EN ISO 9227

AEROCOMPACT® Europe GmbH | Gewerbestraße 14 | 6822 Satteins, Österreich

T: +43 5524 22 566 | E: office@aerocompact.com

aerocompact.com