



GAUTAM
SOLAR

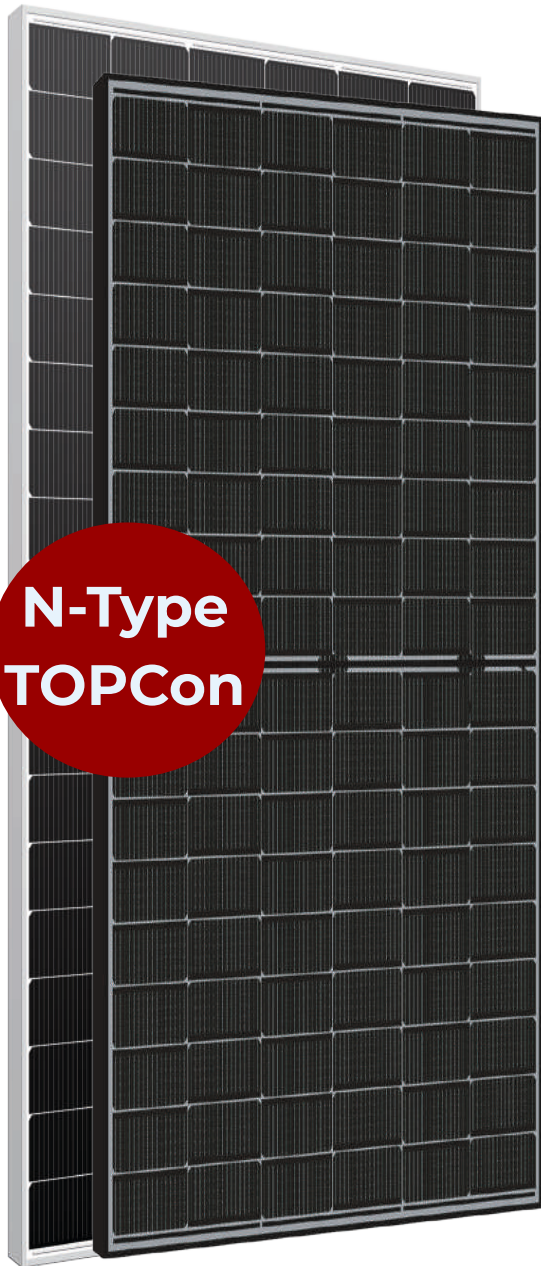
G2X N-Type TOPCon Half-cell
420 Wp - 435 Wp 108 Cells

Area under
2 m²

21.77%

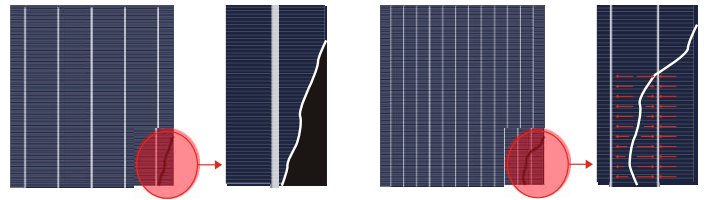
Maximum Module Efficiency

Ideal for **Rooftop**



**N-Type
TOPCon**

**N-Type Lowers Chances of
Micro-Cracks**



More Power Per m²
30% More Power than P-Type



● +91 9289350481

● info@gautamsolar.com

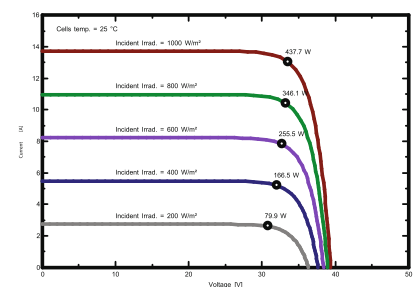
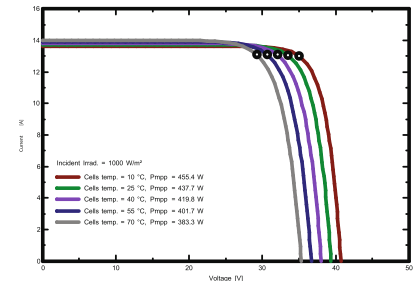
www.gautamsolar.com

ELECTRICAL DATA (STC)				
Peak Power Output -Pmax(Wp)	420	425	430	435
Power Output Tolerance (Wp)	0 ~ +5	0 ~ +5	0 ~ +5	0 ~ +5
Open Circuit Voltage-Voc(V)	38.74	38.95	39.16	39.36
Maximum Power Voltage-Vmpp(V)	32.16	32.37	32.58	32.78
Short circuit current-Isc(A)	13.51	13.58	13.65	13.72
Maximum Power Current-Impp(A)	13.06	13.13	13.20	13.27
Module Efficiency (%)	21.02	21.27	21.52	21.77
Fill Factor (%)	80.25	80.35	80.44	80.55

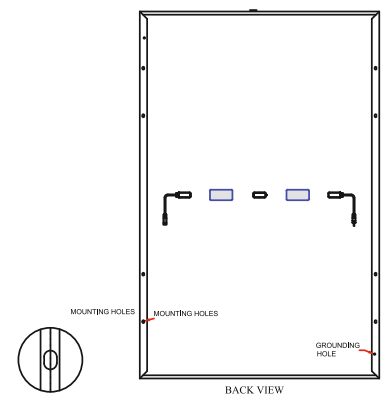
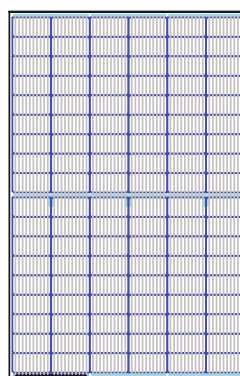
ELECTRICAL DATA (NOCT)				
Peak Power Output -Pmax(Wp)	316.00	320.00	323.00	327.00
Open Circuit Current-Voc(V)	36.80	37.00	37.20	37.39
Maximum Power Voltage-Vmpp(V)	29.95	30.19	30.30	30.50
Short circuit current-Isc(A)	10.91	10.96	11.02	11.08
Maximum Power Current-Impp(A)	10.55	10.60	10.66	10.72

MECHANICAL DATA	
Solar Cells Per Module (units)	108
Cells Configuration (Matrix)	18 × 6
Cell Size(mm)	91 × 182
Length(L) × Width(W) × Thickness(T) in mm	1722 × 1134 × 30 35
Area of module (sq-m)	1.952748
Weight of module(kg)	21.0±5%

Cell Type	N-type Mono-crystalline (91 × 182)
Junction Box	IP 68 rated Split Junction Box with Individual Bypass Diode
Connector	IP 68 rated MC4 Compatible
Front Cover(Glass)	Low Iron High Transmission AR Coated Tempered Glass
Encapsulant	EVA
Frame	Silver / Black Anodized Aluminum Frame



Temperature Ratings	
NOCT	45°C ± 2°C
Maximum System Voltage	1500V DC
Maximum Series Fuse Rating	25A
Temperature Coefficient of Pmax	-0.29% /°C
Temperature Coefficient of Voc	-0.25% /°C
Temperature coefficient of Isc	0.045% /°C
Temperature Range	- 40°C to + 85°C



Specifications provided in the datasheet are subject to change without Prior notice.

